

**Product to be
Discontinued.**

**Replaced with MaxiLED Large
Globe DMX White
High Output**



MaxiLED Large Globe Series
High Output

KEY FEATURES

- High Output
- IP68
- Cree® LED
- 24VDC



Product Overview

MaxiLED Strands provide exceptionally long strands of globe-lensed LEDs that can be used to outline buildings and bridges or connect architectural features with brilliant white lighting. Each strand is built for permanent installations with rugged, injection-molded outer globes, heavy gauge wiring, and dependable CREE LEDs.

**Product to be
Discontinued.**

**Replaced with MaxiLED
Large Globe DMX White
High Output**

Specifications

High Output

Electrical specification

Power input:	24VDC
LED Current:	100ma
Watts per unit:	1.2w
Max. Units per system (1.5mm sq cable):	See Chart below
Max distance from 1st to last unit (1.5mm sq cable):	50m (164 ft)
Lumens RGBW (Clear)	80 Lumens
Lumen Maintenance 85%:	70,000Hrs

LED options

Cool White (6000K):	YES
Warm White (2700K):	YES

System Cable Distances

Max. cable 1.5mm sq from Power to 1st fitting:	5m (16 ft)
---	------------

Protection

IP Rating:	IP68
Thermal Protection cut out at 70°C:	NO
Operation Temperature:	-25 to +50

Finishes

Globe lenses:	UV stabilized polycarbonate
---------------	-----------------------------

Listings:

CE.

Dimensions & Weights

Diameter (mm):	63 mm (2.5 ins)
Height (mm):	82 mm (3.23 ins)
Weight Globe (Each):	41G (1.44 Ounce)
Weight cable CE (1Meter):	71G (2.50 Ounce)
Weight cable UL(1Meter):	56G (1.97 Ounce)

Transformer

Max. Quantiy of Fittings

100W	50 Globes
150W	100 Globes
240W	150 Globes

Even though the total load is below the power supply capacity, this is due to the inrush current limitations on start up.



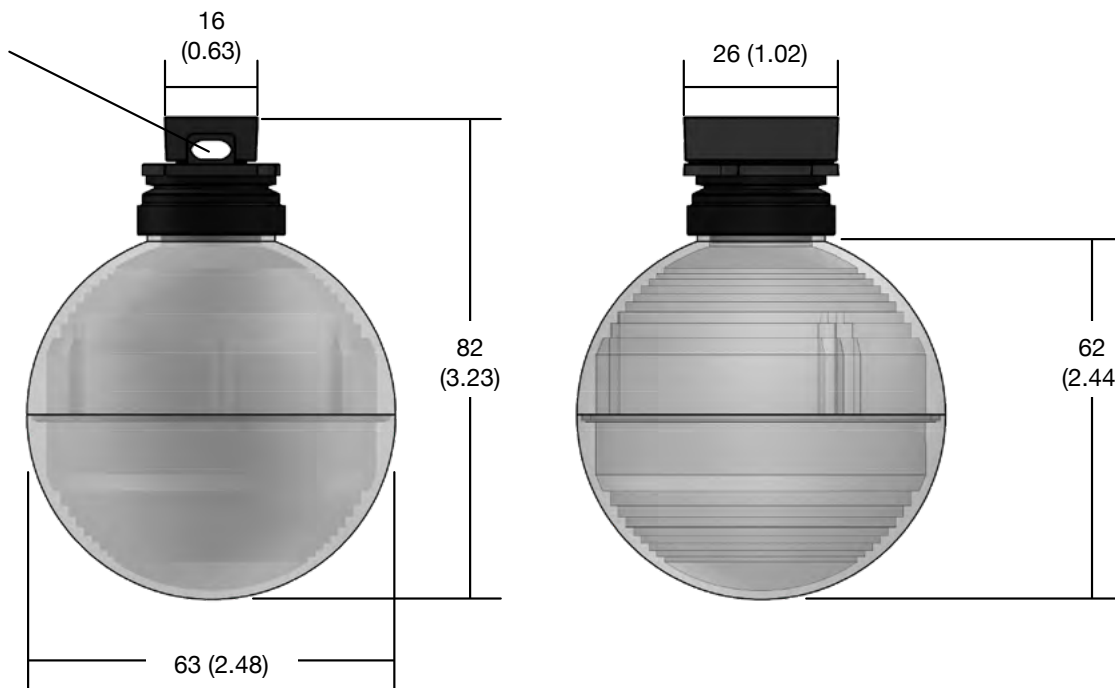
UK Designed and
Manufactured

MaxiLED Lighting

Unit 2, Farrington Place, Rossendale Road Ind. Est. Burnley, Lancashire. UK. BB11 5TY
T: +44 (0)1282 448086 E: sales@maxiledlighting.com Web: www.maxiledlighting.com

MM (INCHES)

CABLE 6 (0.24) DIAMETER
(10 AWG)



**Product to be
Discontinued.**

**Replaced with MaxiLED
Large Globe DMX White
High Output**

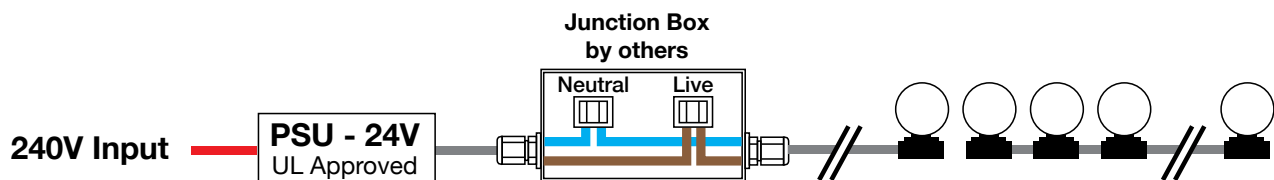


MaxiLED Lighting

Unit 2, Farrington Place, Rossendale Road Ind. Est. Burnley, Lancashire. UK. BB11 5TY
T: +44 (0)1282 448086 E: sales@maxiledlighting.com Web: www.maxiledlighting.com



This product must be installed by a qualified electrician in accordance with all national and local electrical and construction codes.
Failure to comply with the installation instructions can result in serious injury or death.



**Product to be
Discontinued.**

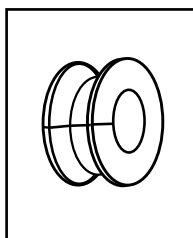
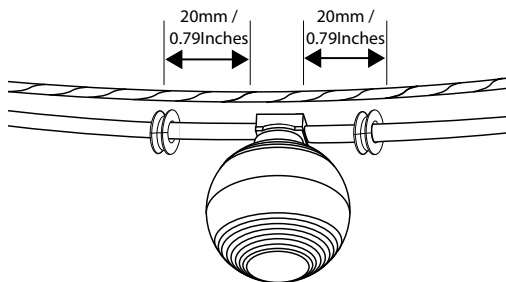
**Replaced with MaxiLED
Large Globe DMX White
High Output**



This product must be installed by a qualified electrician in accordance with all national and local electrical and construction codes. Failure to comply with the installation instructions can result in serious injury or death.



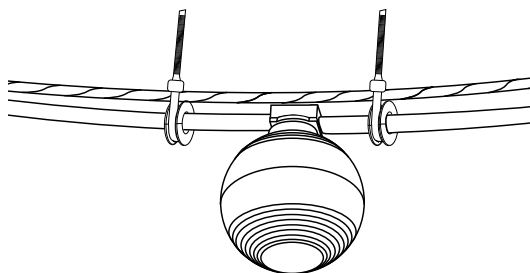
1 Place rubber grommets over MaxiLED Cable



(a). Make sure catenary cable is taught and secure.

(b). With the secure catenary cable above the MaxiLED Cable, place a rubber grommet 20mm / 0.79 inches either side of the MaxiLED housing.

2 Secure MaxiLED Cable

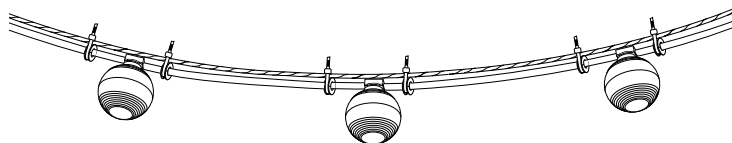


(a). Using a suitable sized UV resistant zip tie (4.8mm width), secure the grommet up against the catenary cable.

(b). Trim excess cable tie.

NOTE: GROMMET PLACED OVER MAXILED CABLE

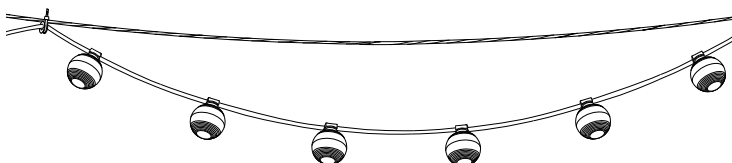
3 Repeat Procedure



(a). Repeat process 1-2 until the installation is complete.

(b). Connect the installed unit to the correct transformer.

4 Alternative Fixing Method



(a). alternative fixing method creating a hoop effect.

The transformer must be installed by a qualified electrician in accordance with all national and local electrical and construction codes.

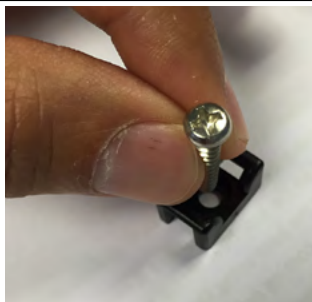
Failure to comply with the installation instructions can result in serious injury or death.



This product must be installed by a qualified electrician in accordance with all national and local electrical and construction codes.
Failure to comply with the installation instructions can result in serious injury or death.



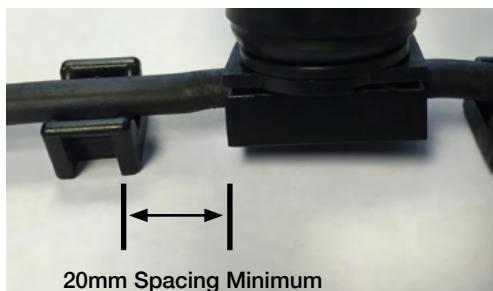
1 Fitting the Fixing Clip to the desired Surface



(a). Screw fix the Fixing clip to the desired surface.

NOTE: Correct screw must used to assure that the head is counter sunk within the fixing clip.

2 Spacing the Fixing Clip



(a). Ensure that the Spacing between each Fixing Clip and MaxiLED Globe is 20mm Minimum

3 Cable Tie the MaxiLED Strand Cable to the Fixing Clip



(a). Using the Supplied UV/Weather resistant Cable tie.

(b). Feed the Cable tie through the Fixing Clip and Secure the MaxiLED Strand Cable

4 Repeat Procedure

(a). Repeat process 1-3 until the installation is complete.



Product		LED
MaxiLED Strand Large globe - High output	SLG-HO	CW
		WW
EXAMPLE:	SLG-HO	CW

Product to be Discontinued.

Replaced with MaxiLED
Large Globe DMX White
High Output