

Product to be Discontinued.

Replaced with MaxiLED Large
Globe DMX White
High Output



MaxiLED Focal Facade Series
High Output

KEY FEATURES

- High Output
- IP68
- Cree® LED
- 24VDC

Product to be Discontinued.

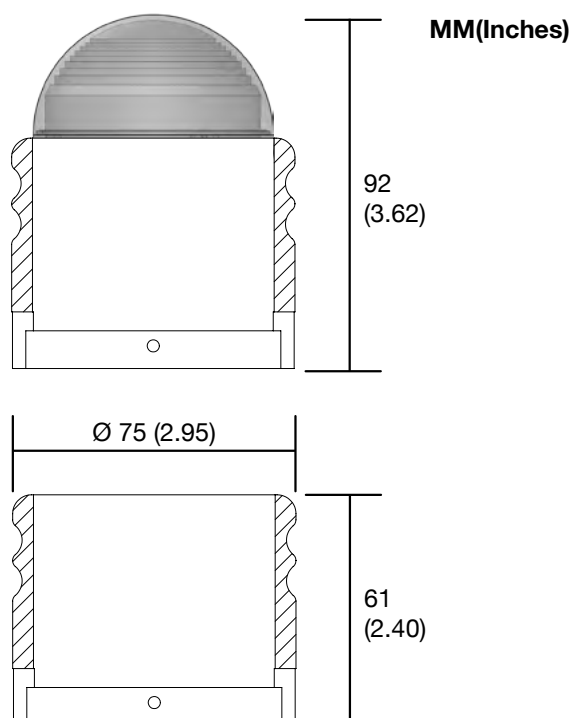
Replaced with MaxiLED
Large Globe DMX White
High Output



Product Overview

The MaxiLED Focal Facade high output provides durable low profile point-of-light fixtures that can be arranged in virtually any linear or matrix configuration. With up to 80 fixtures per run, Focal Facade installations deliver high impact lighting effects on buildings and other structures utilising the latest CREE LEDs.

Dimensions



UK Designed and
Manufactured

Specifications

High Output

Electrical specification

Power input:	24VDC
LED Current:	350ma
Watts per unit:	1.2w
Max. Units per system (1.5mm sq cable):	See below
Max distance from 1st to last unit (1.5mm sq cable):	50m (164 ft)
Lumens (Clear Globe)	80 Lumens
Lumen Maintenance 85%:	70,000Hrs

LED options

Cool White (6000K):	YES
Warm White (2700K):	YES
Red:	YES
Green:	YES
Blue:	YES

System Cable Distances

Max. cable 1.5mm sq from Power to 1st fitting:	5m (16 ft)
---	------------

Protection

IP Rating:	IP68
Thermal Protection cut out at 70°C:	NO
Operation Temperature:	-25 to +50

Finishes

Globe lenses:	UV stabilized polycarbonate
Black Anodised:	YES
Silver Anodised:	YES
RAL Powder Coat:	YES

Listings:

CE.

Dimensions & Weights

Diameter (mm):	75 mm (2.95 ins)
Height (mm):	92 mm (3.62 ins)
Weight (Each unit):	270G (9.5 Ounce)
Weight cable CE (1Meter):	71G (2.50 Ounce)
Weight cable UL (1Meter):	56G (1.97 Ounce)

Installation Options

Wall plate (Flush)	YES
--------------------	-----

Transformer

Max. Quantiy of Fittings

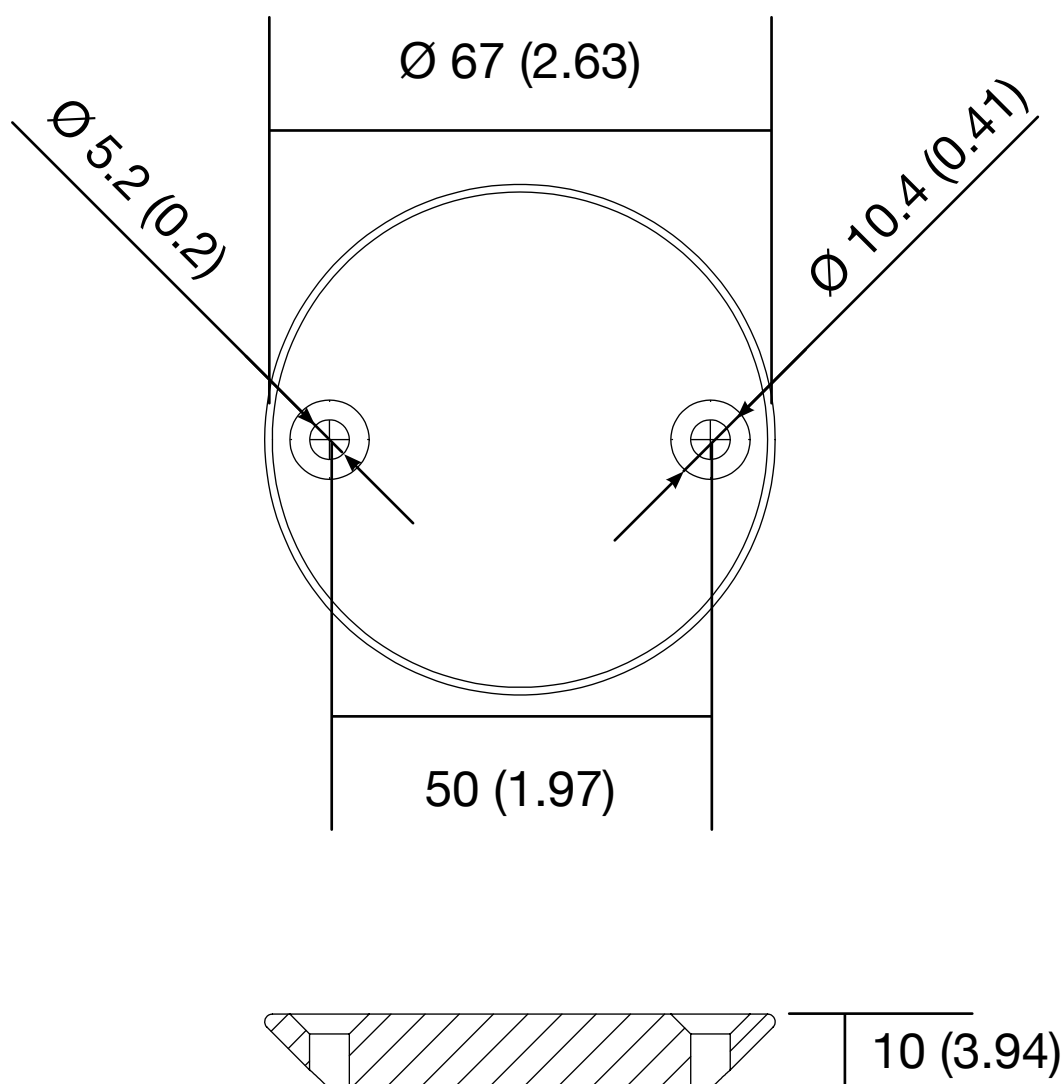
240W	80 Fittings
------	-------------

Even though the total load is below the power supply capacity, this is due to the inrush current limitations on start up.

MaxiLED Lighting

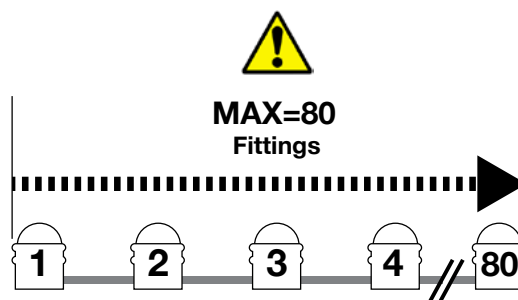
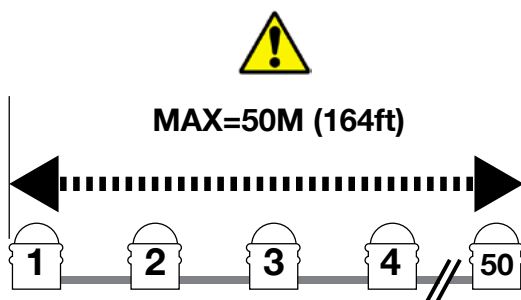
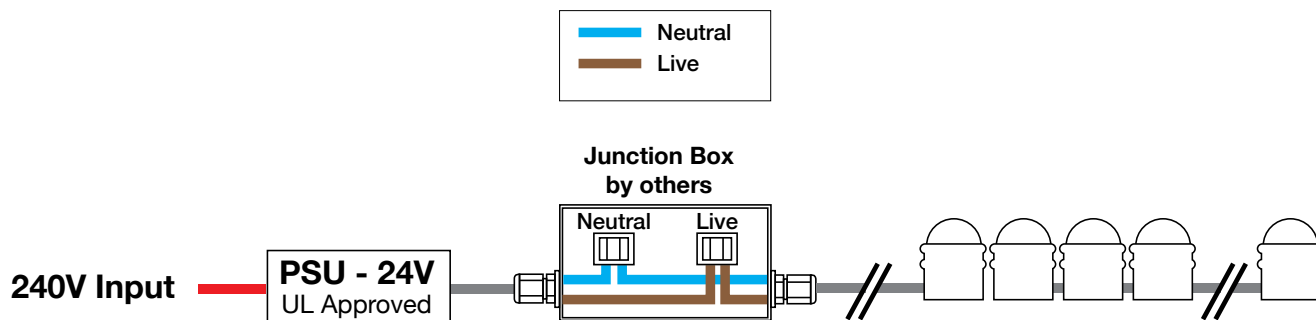
FIXTURE IN INSTALLATION SLEEVE

MM (INCHES)





This product must be installed by a qualified electrician in accordance with all national and local electrical and construction codes.
Failure to comply with the installation instructions can result in serious injury or death.



**Product to be
Discontinued.**

**Replaced with MaxiLED
Large Globe DMX White
High Output**

MaxiLED Focal Facade Installation Instructions



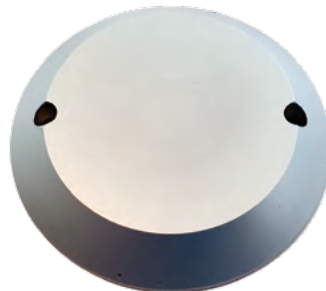
This product must be installed by a qualified electrician in accordance with all national and local electrical and construction codes. Failure to comply with the installation instructions can result in serious injury or death.



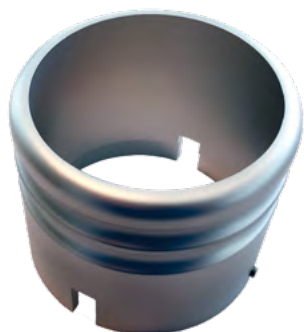
1 Parts supplied for installation



Mounting plate (front)



Mounting plate (wall side)



Housing



Hex wrench



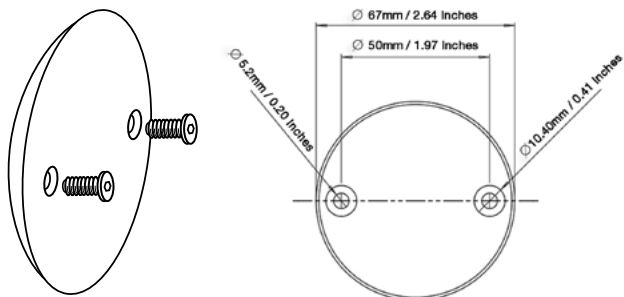
Final installation example



This product must be installed by a qualified electrician in accordance with all national and local electrical and construction codes.
Failure to comply with the installation instructions can result in serious injury or death.



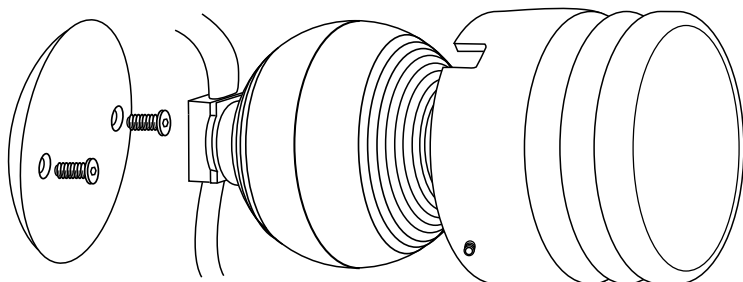
1 Fitting the mounting plate



- Start installation at the end of the strand where the power will input.
- Measure and Mark out Facade fittings location.
- Mount the Facade fixing plate to the required location using the suitable fixings.

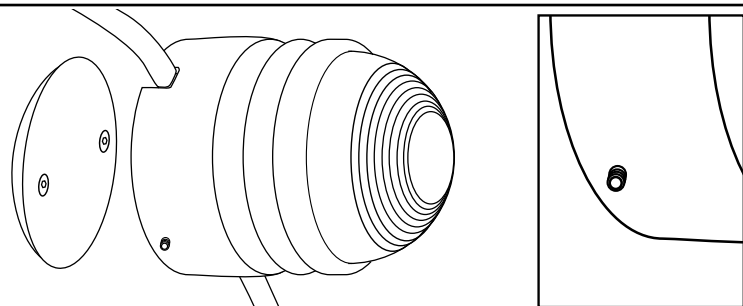
NOTE: Care must be taken when locating the mounting plate so that it corresponds with the pre-made cable harness.

2 Align MaxiLED Facade housing to Globe cable



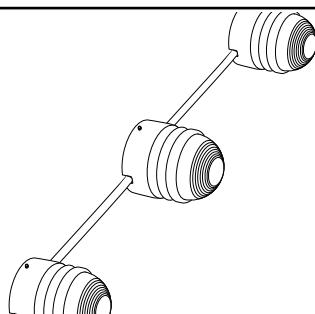
- Place the required Globe into the Front Facade housing from the rear and align the cable into the two slots either side.

3 Secure globe and housing to the fixing plate



- With the Globe pushed into the Facade housing, push the unit up against the secured fixing plate.
- Using the supplied 2mm / 0.08 inch hex wrench tighten the two grub screws on either side of the housing.
- Ensure the housing is fitted flush against the surface.

4 Repeat Procedure



- Repeat process 1-3 until the installation is complete.
- Connect the installation to the correct power supply.
(SEE INSTALLATION INSTRUCTIONS FOR POWER SUPPLY OPTIONS.)

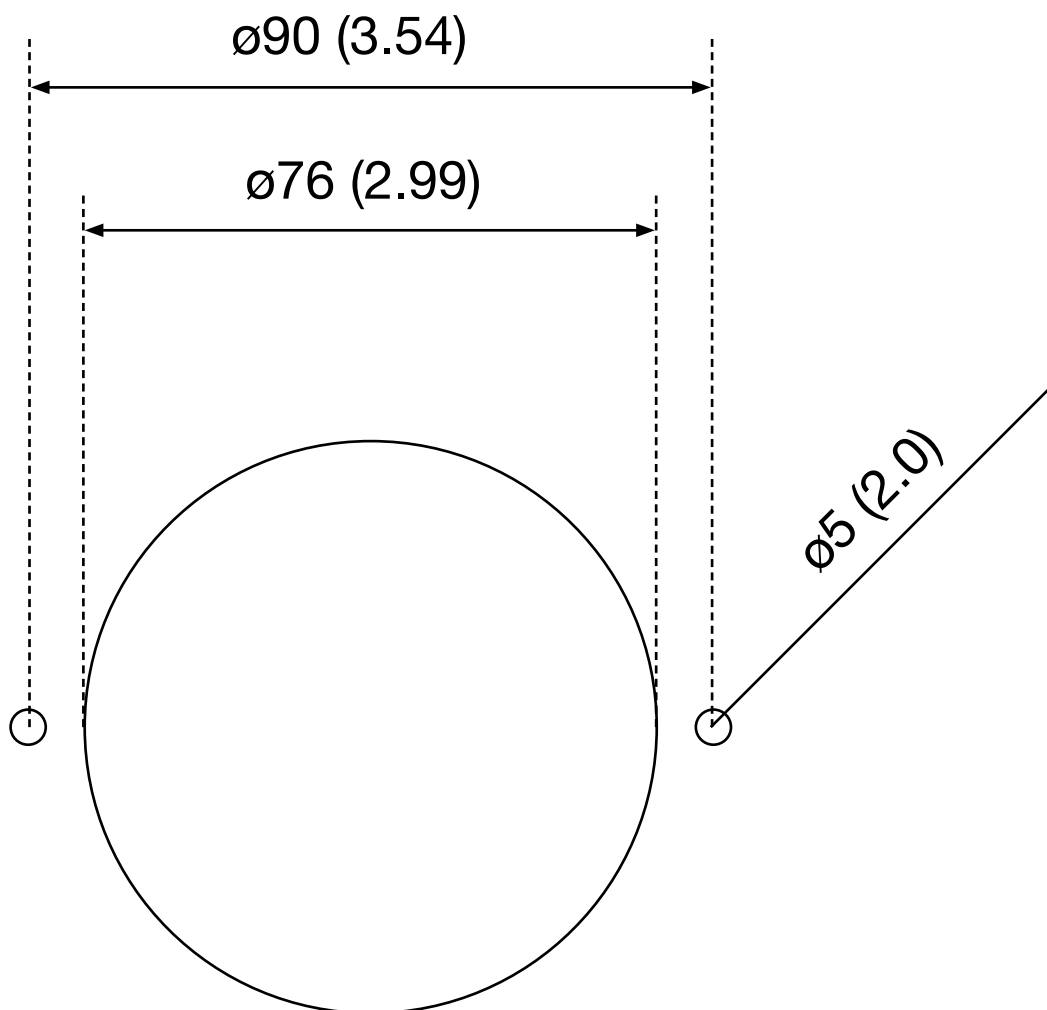


This product must be installed by a qualified electrician in accordance with
all national and local electrical and construction codes.
Failure to comply with the installation instructions can result in serious injury or death.



1 Cutting template

MM (INCHES)



Ordering

EXAMPLES: UKFF-HO-CW-CL-BC-I-1000-9000-80-50, UKFF-HO-GR-CL-WC-M-180-3000-80-30

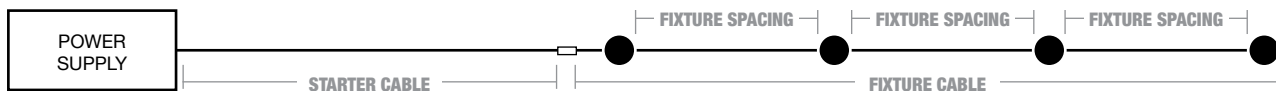
PRODUCT CODE		LED COLOR		LENS	CABLE COLOR
UKFF-HO					
UKFF - HO	CE MaxiLED Focal Facade	CW Cool white (6000K)	WW Warm white (2700K)	CL Clear lens	BC Black cable WC White cable
ULFF - HO	USA MaxiLED Focal Facade	RE Red BI Blue	GR Green		

MEASUREMENT UNITS	LENGTH OF STARTER CABLE	LENGTH OF FIXTURE CABLE	NUMBER OF FIXTURES	FIXTURE SPACING
M Metric units (cm) I Imperial units (in)	CMS OR INS	CMS OR INS	1 TO 80	CMS OR INS

Starter Cable + Fixture Cable <= 10,500 cm (4,133 ins)

Assumes Fixtures are spaced at the same distance on the strand. For inconsistently spaced fixtures on a strand, contact factory.

Ordering Definitions and Assistance



LENGTH OF FIXTURE CABLE

If you know the **NUMBER OF FIXTURES** and the **FIXTURE SPACING** for a strand, you can verify your **LENGTH OF FIXTURE CABLE**.

A) **NUMBER OF FIXTURES** (MAX 80)

B) **FIXTURE SPACING** (CMS OR INS)

C) Multiply answer A by answer B

NUMBER OF FIXTURES

If you know the **LENGTH OF FIXTURE CABLE** and the **FIXTURE SPACING**, you can verify your **NUMBER OF FIXTURES**.

A) **LENGTH OF FIXTURE CABLE** (CMS OR INS).....

B) **FIXTURE SPACING** (CMS OR INS)

C) Divide answer A by answer B

FIXTURE SPACING

If you know the **LENGTH OF GLOBE CABLE** and the **NUMBER OF FIXTURES** for a strand, you can verify your **GLOBE SPACING**.

A) **LENGTH OF FIXTURE CABLE** (CMS OR INS).....

B) **NUMBER OF FIXTURES** (MAX 80)

C) Divide answer A by answer B