



Data over Power distribution
to the fixtures



2 Core
Data over Power



DMX RGBW
Controllable

MaxiEDGE Series

DMX controllable



MaxiEDGE Series

DMX controllable - Datasheet



KEY FEATURES

- 512 DMX RGBW Controllable
- IP66
- Multi chip Cree® LED
- 48VDC Data over Power 2 wire system
- Recessed or surface mount options

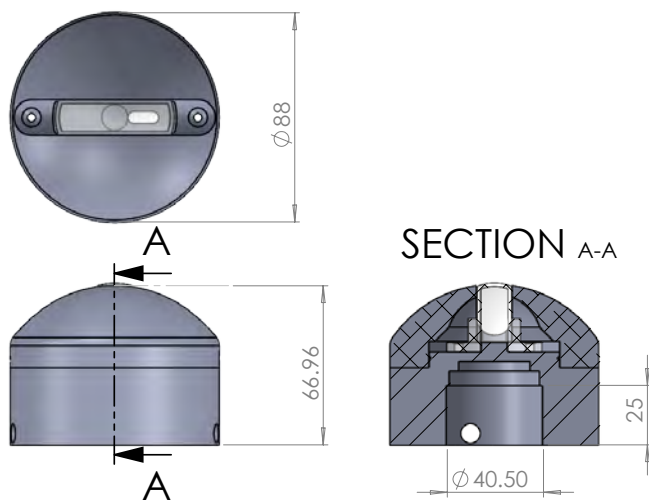


MaxiEDGE surface mount

Product Overview

Our IP66 MaxiEDGE DMX controllable fitting is perfect for window edge and corridor lighting. With a 170 degree viewing the MaxiEDGE casts a sharp, precise beam of light around the surface area of window/door reveals or corridors.

Manufactured from quality materials and incorporating our Patented 2 wire data over power technology giving full DMX control down the 2 power wires makes it the simplest to install and most cost effective product of its type in the market place today.



Specifications

MaxiEDGE

Dimming

DMX Dimmable (Data Over power):	YES
------------------------------------	-----

LED Options

(Cree XQE Led's)	
RGBW:	YES
Intelligent white 2700k-6000K:	YES

Beam Angles

170° x 5°	YES
-----------	-----

Electrical specification

Power input:	48VDC Data Over Power MaxiLINK system
LED Current:	200ma
Watts per unit:	4.8w
Max. Units per system	
16 AWG (1.5mm sq) cable:	50
Max distance from 1st to last unit 16 AWG(1.5mm sq) cable:	100m
Lumens Static colours	
Clear Glass (Full On):	150 Est.
Lumens Static white (Full On):	250 Est.
Lumen Maintenance 85%:	90,000Hrs

System Cable Distances

Max. 16 AWG (1.5mm sq) cable from MaxiLINK to 1st fitting:	15m
Max. 14 AWG (2.5mm sq) cable from MaxiLINK to 1st fitting:	75m

Protection

IP Rating:	IP66
Thermal Protection cut out at 70°C:	YES
Operation Temperature:	-25 to +50

Finishes

Black Anodised:	YES
Silver Anodised:	YES
RAL Powder Coat:	YES

Listings:	UL LISTED, CE, UKCA
------------------	---------------------

Dimensions & Weights

Diameter (mm):	88
Depth (mm):	67
Weight KG:	0.45KG



UK Designed and
Manufactured

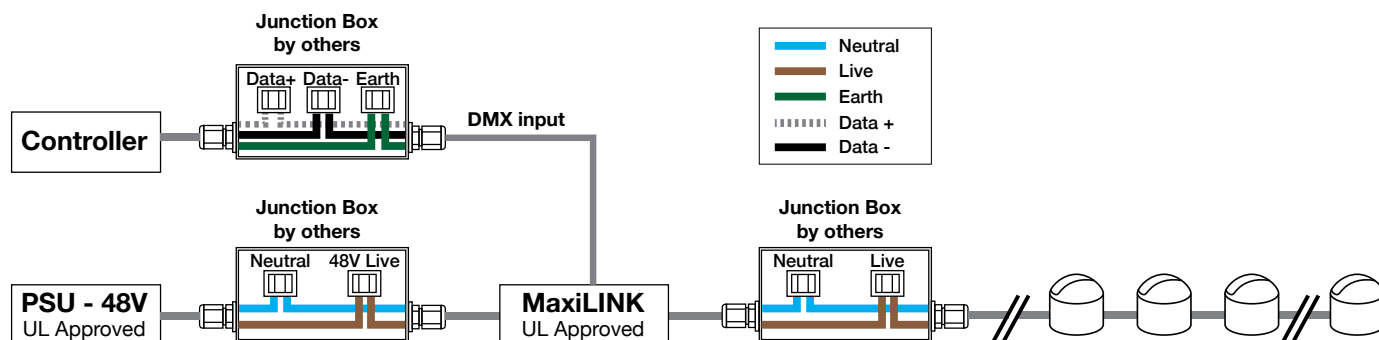
MaxiLED Lighting

Unit 2, Farrington Place, Rossendale Road Ind. Est. Burnley, Lancashire. UK. BB11 5TY
T: +44 (0)1282 448086 E: sales@maxiledlighting.com Web: www.maxiledlighting.com

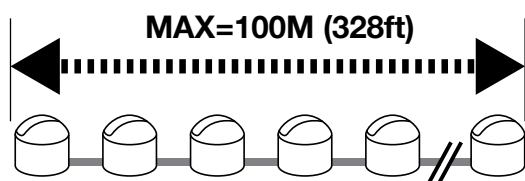
MaxiEDGE DMX RGBW Wiring Illustration



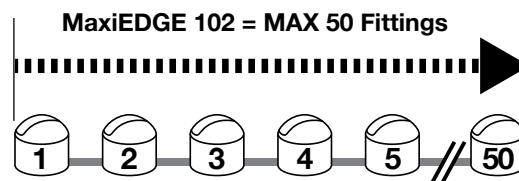
This product must be installed by a qualified electrician in accordance with all national and local electrical and construction codes.
Failure to comply with the installation instructions can result in serious injury or death.



MaxiEDGE
Maximum run distance



MaxiEDGE
Maximum Fittings



MaxiLED Lighting

Unit 2, Farrington Place, Rossendale Road Ind. Est. Burnley, Lancashire. UK. BB11 5TY
T: +44 (0)1282 448086 E: sales@maxiledlighting.com Web: www.maxiledlighting.com

Product		Surface/Recessed		LED	Control		Fly Lead Colour		Finish		USA/Rest of World	
MaxiEDGE	MEDGE	Surface	SUR	RGBWW (2700K)	DMX	DMX	Black	B	Aluminium Anodized Black	AB	USA	UL
		Recessed	REC	RGBCW (6500K)	Power Switch	PS	White	W	Aluminium Anodized Silver	AS	Rest of World	ROW
				IW					MaxiSEAL Black	MSB		
				2700 (WW)					MaxiSEAL Silver	MSS		
				6000 (CW)					RAL(Colour)	RAL		
				Red					Stainless Steel	SS		
				Green								
				Blue								
EXAMPLE: MEDGE			SUR	2700		DMX		B		MSB		UL

MaxiLED Lighting

Unit 2, Farrington Place, Rossendale Road Ind. Est. Burnley, Lancashire. UK. BB11 5TY
T: +44 (0)1282 448086 E: sales@maxiledlighting.com Web: www.maxiledlighting.com