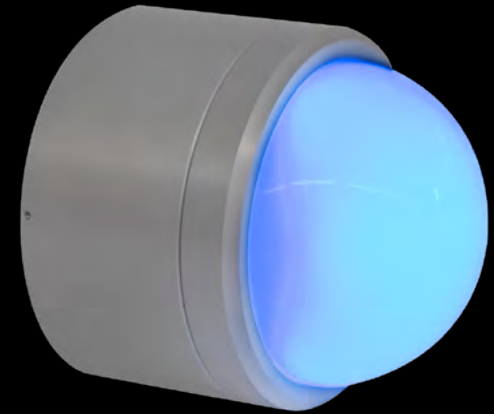
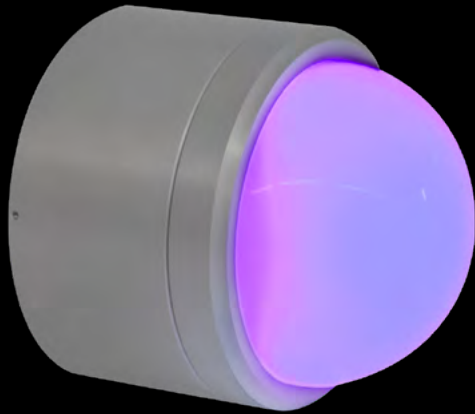


MaxiLED
Lighting

MaxiDOT 302 180°

MaxiDOT 302 180°



Key Features

- 512 DMX Controllable
- Available in Intelligent White
- Single strand runs as long as 330 ft (100m)
- 180° Viewing angle
- IP68
- Available in two sizes

Description

Our MaxiDOT 302 180° fitting is the perfect solution for most building facades. Delivering 180° viewing not only for marker light applications but for low resolution screen and matrix systems. Manufactured from quality materials and incorporating our Patented 2 wire data over power technology giving full DMX 512 control down the 2 power wires makes it the simplest to install and most cost effective product of its type in the market place today.

MaxiDOT 302 180°

Specifications

Power input: **48VDC**

Watts per unit: **14.4w**

LED Current: **200ma**

Lumens RGBW Clear Glass (Full On): **450**

Lumens Intelligent white (Full On): **750**

Features



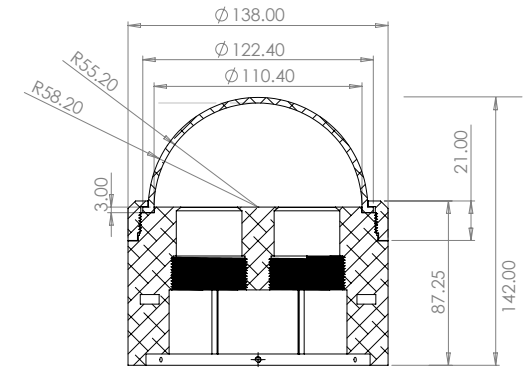
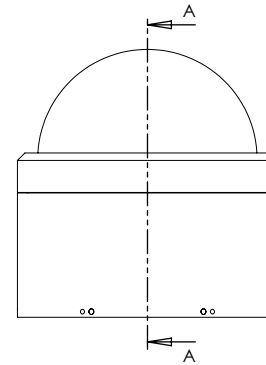
Lens Options

Frosted Lens

Finishes



Dimensions



SECTION A-A
SCALE 1 : 2

Certifications



MaxiLED
Lighting

MaxiDOT 302 180°



MaxiLED Lighting

Unit 2, Farrington Place, Rossendale Road Ind. Est. Burnley, Lancashire. UK. BB11 5TY
T: +44 (0)1282 448086 E: sales@maxiledlighting.com Web: www.maxiledlighting.com