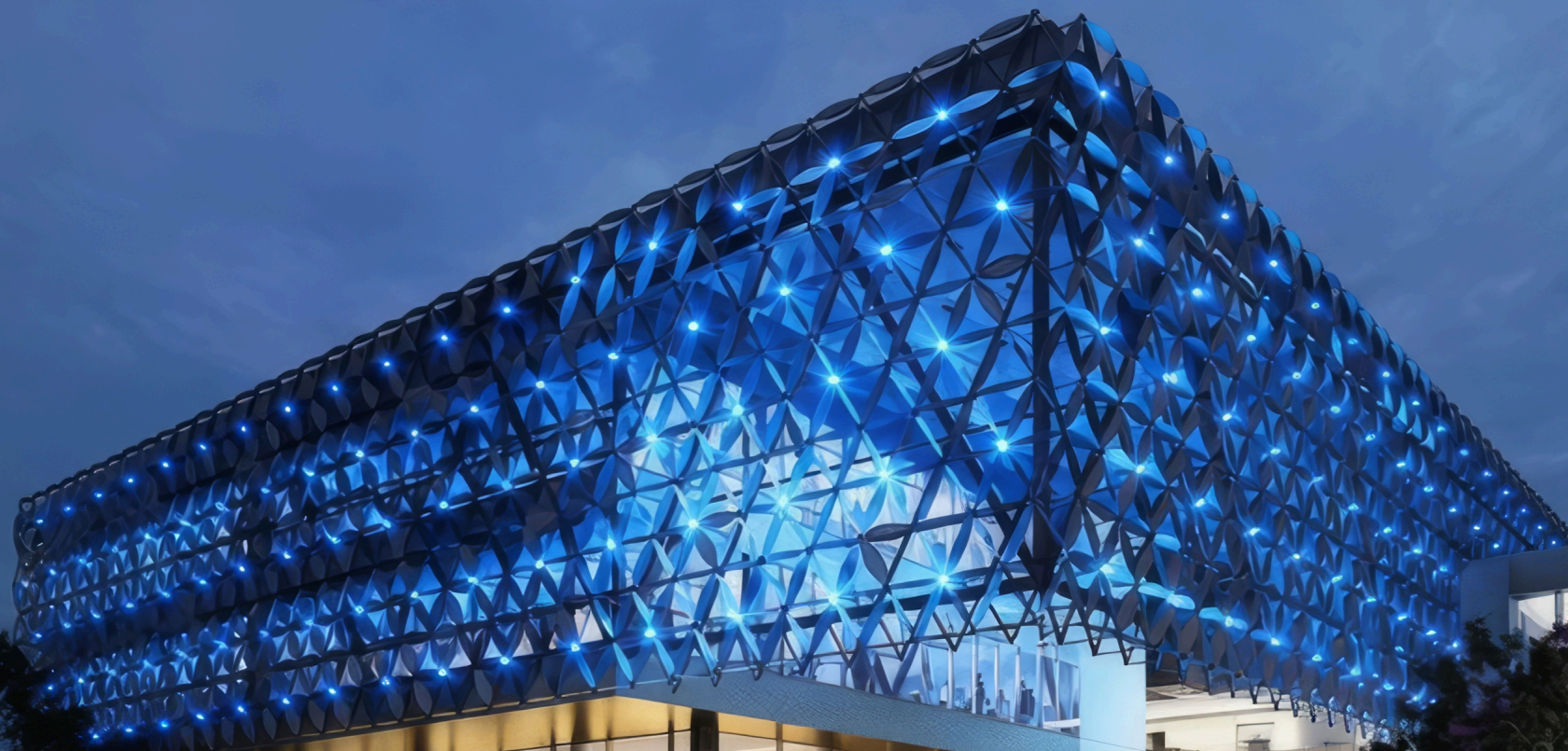
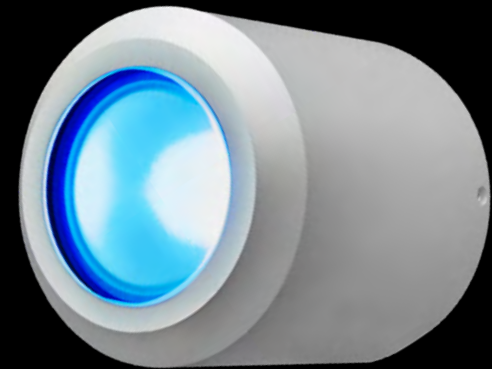
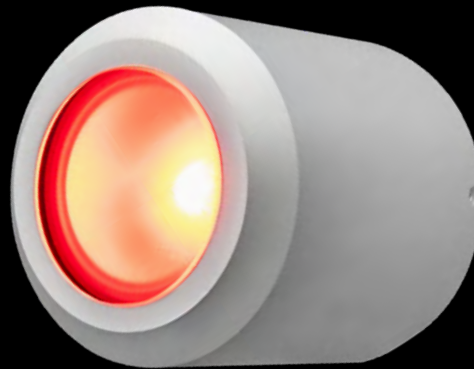
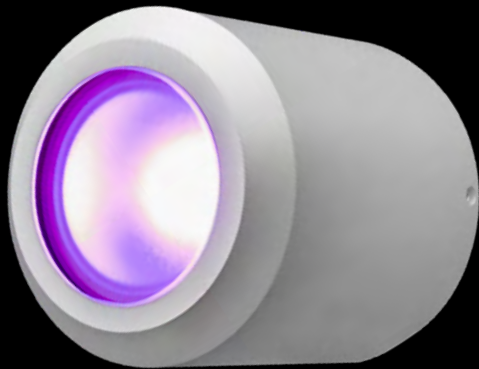


MaxiLED
Lighting



MaxiDOT 102

MaxiDOT 102



Key Features

- 512 DMX Controllable
- Available in Intelligent White
- Single strand runs as long as 330 ft (100m)
- IP68

Description

Our MaxiDOT 102 fitting is the perfect solution for most building facades. Delivering direct viewing not only for marker light applications but for low resolution screen and matrix systems. Manufactured from quality materials and incorporating our Patented 2 wire data over power technology giving full DMX 512 control down the 2 power wires makes it the simplest to install and most cost effective product of its type in the market place today.

MaxiDOT 102

Specifications

Power input: **48VDC**

Watts per unit: **4.8w**

LED Current: **200ma**

Lumens RGBW Clear Glass (Full On): **150**

Lumens Intelligent white (Full On): **250**

Features



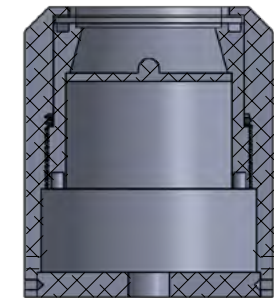
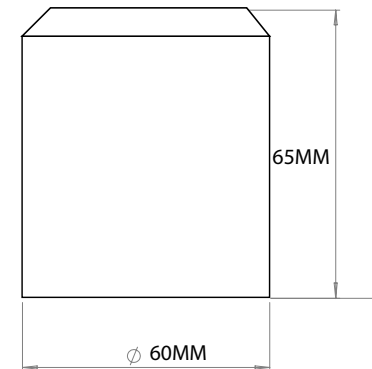
Lens Options

Frosted Lens

Finishes



Dimensions



SECTION A-A

Certifications



MaxiDOT 102



MaxiLED Lighting

Unit 2, Farrington Place, Rossendale Road Ind. Est. Burnley, Lancashire. UK. BB11 5TY
T: +44 (0)1282 448086 E: sales@maxiledlighting.com Web: www.maxiledlighting.com