



MaxiLED
Lighting

*SPECIFICATION
PRODUCT
CATALOGUE*

EDITION 5

Company History

Our origins date back to 1987 with the initial enterprise supplying Festoon lighting throughout the United Kingdom. Our parent company LITE bought and rebranded the name into **MaxiLED** back in 2005 and developed this into the product we see today. The main development being the use of LED technology and continued expansion of the brand range creating a product suite from festoon through to In Ground along with the use of a 2-core colour change control technology. In 2010 we first exported **MaxiLED** and now the brand reaches across the globe from Australia / Oceania through to North America. This takes the brand through the most demanding and diverse environments conceivable from high temperatures to heavy salt water environments with product survivability beyond 10 years. Continuous development has seen increases in efficacies of light sources, enhancements of the materials utilised and a broadening of the light sources and controls packages available. An increase in the requirements of custom-built bespoke options has allowed us to develop some very interesting and technical solutions based upon the tried and tested core of the **MaxiLED** brand.

We hope you find this brochure offers you the awareness, creates the interest, strengthens the desire and convinces you to transform your projects into actionable requirements to use **MaxiLED**.

PATENTED GB2475874

US 10461809B2

BS EN 60598

IEC 60598

UL / cUL

UKCA

CE

MaxiLED Technology

The background for our patented technology is based on simplicity. We found that installing DMX cabling was not only very costly, but more seriously often resulted in installation issues simply due to complicated system architecture. The more logical way to control light, even DMX controllable lighting, is to utilize the simpler electrical wires, and that is exactly what we developed.

Scan for more
information



This forms the core of **MaxiLED**. Our protocol works using Data over power technology which has unrivalled performance and is superior in cost and result to the traditional DMX wiring, providing you with an unparalleled competitive offering for your projects. The system architecture is based on simplicity itself having clear operational parameters and a simple distribution arrangement with all the technology being embedded at the headend ensuring that complex colour changing projects can be delivered securely. Available in a wide range of lighting profiles all delivered via a patented 2 core lighting system including: RGBW and Dynamic White via DMX Static White of optional outputs, Colour Temperatures and control protocols. Single Colours, special effects such as sparkles, chase and random colour changing. Full support of the design and application aspects of the project available.



CONTENTS

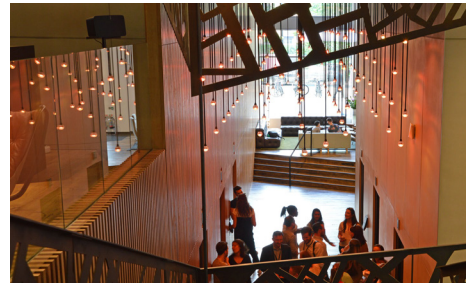
Facade

4-15



Interiors

16-33



Public space

34-67



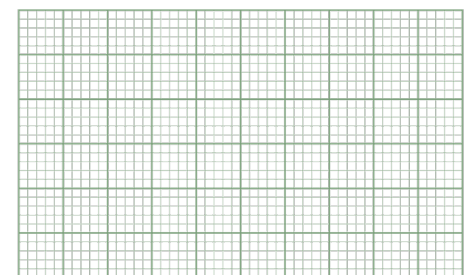
Landmarks and Sculpture

68-89



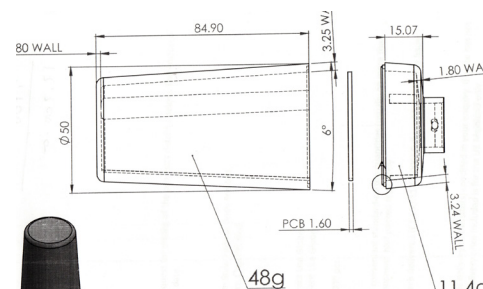
Bespoke and Retrofit

90-103

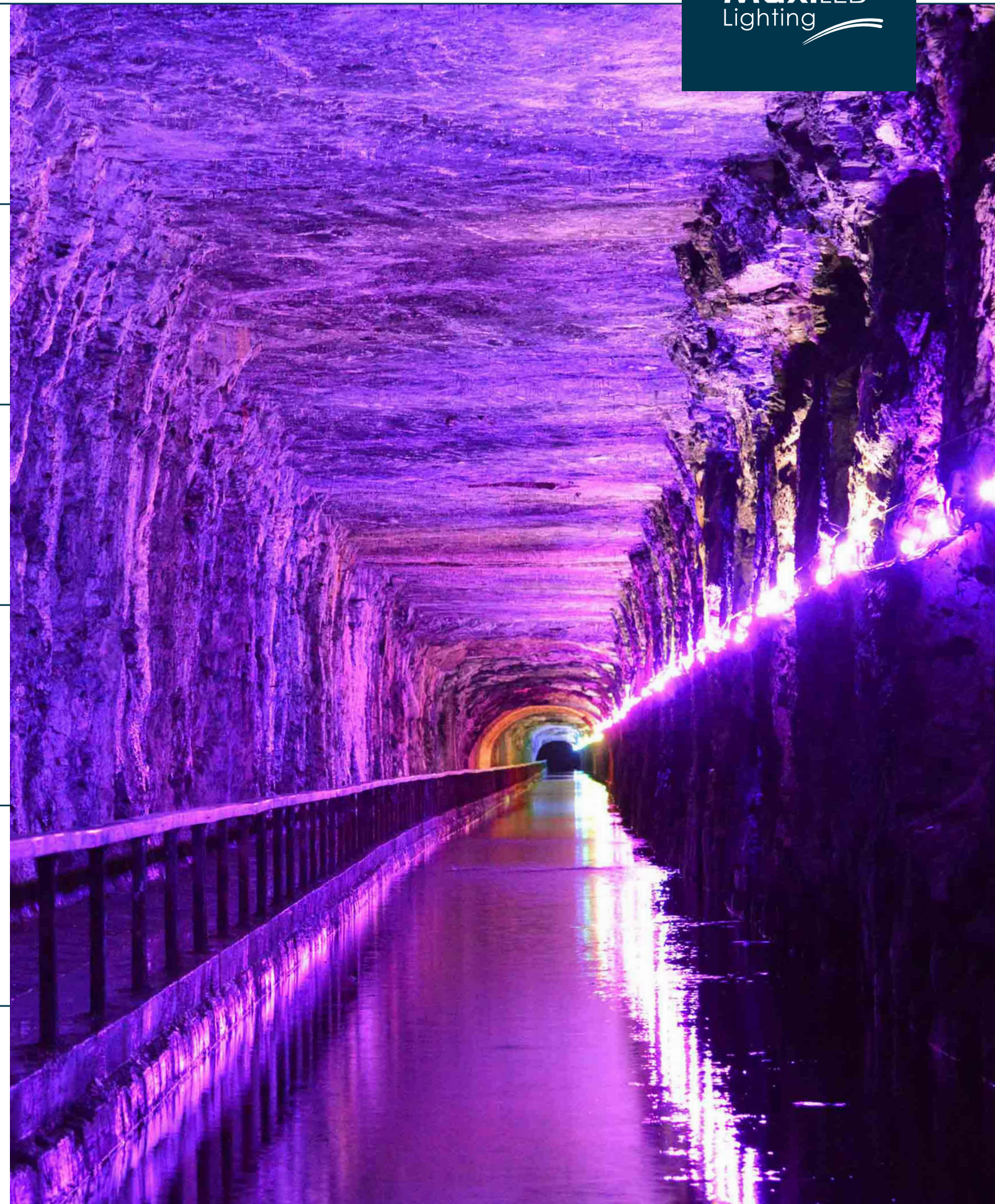


Datasheets

104-131



MaxiLED
Lighting



FACADES

MaxiLED
Lighting



EZONE THE UNIVERSITY OF WESTERN AUSTRALIA PERTH, AUSTRALIA.

MaxiDOT 102 DMX Intelligent white

Project specifications

IP68

Direct View

RGBW

48V

CE

UKCA

5 Year Warranty

For full product specification see datasheet



Project Information

Client: Light Project

Location: Perth - Australia

Products Used: **MaxiDOT 102** Intelligent white DMX

Background

The EZONE UWA Student Hub serves as a vibrant shared precinct for the EMS community and its partners, establishing a new western gateway to the University of Western Australia's Crawley Campus. The design masterfully blurs the lines between indoor and outdoor spaces, fostering an environment that promotes interaction and collaboration. Central to the design are innovative sustainability features, including PV cell glass skylights, a wind turbine, and a dynamic 'veil' façade.

This veil not only moderates glare and heat but also filters sunlight with petals positioned at varying angles to optimise their orientation. The façade's unique design, inspired by the six-pointed sun symbol - a nod to one of UWA's '100 Treasures' - creates a distinctive exterior identity. The geometric pattern of the veil references mathematics and engineering while offering a visual connection to the surrounding tree canopies.

The centre of the six-pointed sun symbol is highlighted using the **MaxiDOT 102**. These fixtures blend seamlessly with the architecture, chosen for their straightforward installation and the **MaxiLED** 2-core data over power technology, which simplifies both installation and maintenance.

MaxiLED
Lighting



BOARDWALK CASINO, PORT ELIZABETH, SOUTH AFRICA.

MaxiLED Large Globe Static 3000K

Project specifications

IP68

IK07

3000K

24V

CE

UKCA

IEC60598

5 Year Warranty

For full product specification see datasheet



Project Information

Client: SSLI - Solid State Lighting International

Location: Boardwalk Casino, Port Elizabeth - South Africa.

Products Used: **MaxiLED** Large Globe static 3000K

Background

Nestled within earshot of the Indian Ocean's waves crashing onto Port Elizabeth's premier Blue Flag beach, The Boardwalk is surrounded by hotels that cater to a wide range of tastes and budgets, all offering breathtaking ocean views. The Eastern Cape is a destination where families come to unwind, couples fall in love, and adventurers seek thrills.

By night, The Boardwalk transforms into a serene and romantic escape, illuminated by over 25,000 festoon lights. The enchanting lighting, combined with the stunning surroundings, creates a truly magical ambience. The **MaxiLED** small globe was chosen for its exceptional durability, with IP68 and IK07 ratings ensuring resistance to water and impact. Its easy installation method reduces the number of fixings required, making the process more efficient and less intrusive. These features ensure that the lighting not only meets practical needs but also provides a sustainable, long-lasting solution for The Boardwalk Casino and Hotels.

MaxiLED
Lighting



DE MONTFORT HALL, ENGLAND. UK.

MaxiPUNCH DMX RGBW

Project specifications

IP68

25°

RGBW

48V

CE

UKCA

5 Year Warranty

For full product specification see datasheet



Project Information

Client: Leicester City Council

Location: Leicester - United Kingdom

Products Used: **MaxiPUNCH** RGBW DMX

Controller Used: **MaxiLINK** and iPlayer

Background

Since its opening in 1913, De Montfort Hall has been a cultural cornerstone in Leicester for over a century. This 2,000-capacity venue, which includes an auditorium and gardens, ranks among England's busiest and most versatile spaces. While renowned for its music concerts, it also hosts comedy shows, graduation ceremonies, sporting events, and various live exhibitions. Over the years, it has welcomed iconic artists like The Beatles, The Rolling Stones, David Bowie, Chuck Berry, Amy Winehouse, and Adele.

Owned and operated by Leicester City Council, De Montfort Hall is dedicated to serving as a vibrant cultural hub for the local community. The latest project involved upgrading the hall's exterior lighting to a modern, adaptable scheme.

LITE Architectural specified the **MaxiPUNCH** 102 DMX RGBW fixtures to meet this design brief. These fixtures were selected to accentuate the hall's exterior pillars.

One of the key advantages of the **MaxiPUNCH** is its ease of installation. The fixtures can be mounted on existing housings, avoiding the need for new fixings on the Grade II listed building. Its two-core data-over-power technology simplifies the installation process by eliminating the need for an additional data cable, resulting in a clean, single-cable setup that saves both time and money.



Scan to view
the video



MaxiLED
Lighting

AZALAI ABIDJAN HOTEL, ABIDJAN - IVORY COAST, WEST AFRICA.

MaxiLED Focal facade Static - High Output

Project specifications

IP68

IK07

STATIC

24V

CE

UKCA

IEC60598

5 Year Warranty

For full product specification see datasheet



Project Information

Client: Solid State Lighting International (SSLI) - South Africa

Location: Abidjan - Ivory Coast, West Africa.

Products Used: **MaxiLED** Focal Facade

Background

Overlooking the vibrant Marcory district, the Azalai Hotel Abidjan enjoys a prime location in the heart of the capital. Just a short stroll from upscale shops and minutes away from the airport, this exquisite hotel epitomises elegance and excellence.

Solid State Lighting International (SSLI) were tasked with illuminating the hotel's striking exterior. The building's façade is comprised largely of glass panels supported by vertical steel braces, presenting a unique challenge as there was minimal surface area to light.

To accentuate the architectural lines of the building, SSLI selected the **MaxiLED** Focal Facade with high output. This choice allowed them to trace the contours of the hotel with precise, pinpoint lighting. The low voltage, high output model was chosen for its IP68 rating and ease of installation.

The installation process presented challenges due to the need to mount the lighting on the intersection of the steel supports. To overcome this, a custom corner bracket was meticulously designed and engineered under tight deadlines, successfully achieving the client's desired effect.



MaxiLED
Lighting

INTERIORS

MaxiLED
Lighting



OLD OAK, LONDON, ENGLAND, UK.

MaxiLED Large Globe DMX RGBW

Project specifications

IP68

IK07

RGBW

48V

CE

UKCA

5 Year Warranty

For full product specification see datasheet



Project Information

Client: The Collective

Location: London - United Kingdom

Products Used: **MaxiLED** Large Globe RGBW DMX

Controller Used: **MaxiLINK** and Pharos

Background

Old Oak, developed by The Collective, represents a groundbreaking building typology by integrating co-living and co-working spaces in North London. This innovative approach has garnered significant attention from notable media outlets like Dezeen, The Financial Times, and The Interior Photographer, although it also faced more critical feedback from The Guardian.

The flagship co-working space at Old Oak provides a collaborative environment for entrepreneurial businesses. With its modern design, it offers features like breakout spaces, meeting rooms, and event areas, creating a flexible and vibrant workspace.

MaxiLED contributed to this dynamic atmosphere by installing their Large Globes, strategically placed alongside exposed air conditioning ducts. This combination of exposed industrial elements and modern lighting creates a striking yet comfortable work environment, enhancing both functionality and aesthetic appeal within the workspace. The lighting adds warmth and personality to the space, making it inviting for those who use it daily.



MaxiLED
Lighting

HAVAS LONDON,
ENGLAND, UK.

MaxiPENDANT DMX RGBW

Project specifications

IP20

IK07 (Globe)

RGBW

48V

CE

UKCA

5 Year Warranty

For full product specification see datasheet



Project Information

Client: Havas - Creative Communications Agency

Location: London - United Kingdom

Products Used: **MaxiPENDANT** RGBW DMX

Controller Used: **MaxiLINK** and **Pharos**

Background

Collaborating closely with the architect, we crafted a distinctive lighting solution tailored to make a lasting first impression. The foyer lights are crucial in welcoming guests and setting the tone for their experience. Our approach involved developing the **MaxiLED** Large Globe series, which is powered and controlled via a track system. This design allowed us to create varying light intensities, enhancing the spatial perception of the foyer. Additionally, the use of a reflective material on the upper interior surface further amplified the lighting effect.

MaxiLED has refined this range into a patented, easy-to-install system for low-power DMX projects, using standard 1.5 or 2.5 sq. mm cables. The DMX setup mirrors the simplicity of a static installation. This project is particularly unique, utilising a 3-phase track with one phase removed. The DMX signal runs alongside the power through the track, controlling each light point individually. Drivers and controls can be positioned up to 75 meters away from the lighting fixtures, making the system straightforward and clean - especially beneficial for installers who may be less experienced with DMX systems.



MaxiLED
Lighting

TOLBOOTH, STIRLING. SCOTLAND. UK.

MaxiDEPTH DMX RGBW

Project specifications

IP68

IK10

RGBW

48V

CE

UKCA

5 Year Warranty

For full product specification see datasheet



Project Information

Client: Stirling Council

Location: Stirling, Scotland - United Kingdom

Products Used: **MaxiDEPTH**

Background

Originally constructed in 1473 as a medieval tolbooth, this Category A listed building underwent a major redesign in 1705 by Sir William Bruce, becoming the original meeting place of Stirling Burgh Council. Over the centuries, it has served as a court, jail, and even a parliamentary venue. After a comprehensive restoration led by award-winning architect Richard Murphy, the Tolbooth reopened in 2002 and has since gained acclaim as one of Scotland's premier live music venues.

The restoration project, commissioned by Stirling Council, involved meticulous design and planning to meet the rigorous standards of regulatory bodies such as Historic Environment Scotland and local planning authorities. Spanning over four years, the project highlighted LITE Architectural's commitment to innovative and adaptable solutions.

Stirling Council entrusted LITE with a full turnkey solution, encompassing planning, supply, installation, and commissioning of the lighting solutions from their extensive product portfolio. Among the chosen fixtures were the **MaxiLED** series, including the **MaxiDEPTH** Series fittings. These recessed lights are distinguished by their Drive-Over rating of 5000kg, IK10 glass lens, and IP68 factory-sealed optical chamber, ensuring exceptional durability. The lighting is expertly controlled by the Pharos LPC system, designed for themed entertainment and LED lighting installations.

MaxiLED
Lighting



123 ALBION STREET,
LEEDS. ENGLAND. UK.

MaxiPENDANT DMX RGBW

Project specifications

IP20

IK07 (Globe)

RGBW

48V

CE

UKCA

5 Year Warranty

For full product specification see datasheet



Project Information

Client: Merrion

Location: Leeds - United Kingdom

Products Used: **MaxiPENDANT** RGBW DMX

Controller Used: **MaxiLINK** and Pharos

Background

123 Albion Street, a bustling hub in Leeds city centre, has recently undergone a £5 million refurbishment. The revamped commercial building now features Grade A offices, balconies, terraces, striking glazing, a newly designed entrance atrium, a private reception area, and ample on-site parking.

The project brief was to develop a contemporary lighting solution for the new atrium. Following a successful collaboration with Merrion on the Leeds Shopping Centre, LITE, the UK partner for **MaxiLED**, specified **MaxiLED** RGBW Globes for this project. To seamlessly integrate with the ceiling, a white track system was chosen. The bespoke **MaxiLED** Globes were designed with clear crystal cables, while the Ferrall components were finished in silver.

The installation process was streamlined by the low-voltage track system, which allowed for easy adjustments of the Globe positions on-site to meet the client's design specifications. A total of seven **MaxiLINK**s were incorporated, all within a single universe. Due to the building's limited access through two double glass doors, specialised mobile elevating work platforms were used. Despite the tight fit, the outcome is a beautifully illuminated and modern atrium.



MaxiLED
Lighting

GARDEN STATE HOTEL, MELBOURNE. AUSTRALIA.

MaxiLED Small Globe Static

Project specifications

IP68

IK07

Static

24V

CE

UKCA

5 Year Warranty

For full product specification see datasheet



Project Information

Client: Light Project - Melbourne

Location: Melbourne - Australia

Products Used: **MaxiLED** Small Globe Static

Background

In Melbourne's Garden State Hotel, the architects and interior designer has used architectural lighting solutions to craft the mood of its many spaces, while also accentuating the interior architecture. For such a large-scale project, the lighting needed to set the tone but also tell a story.

Light Project worked alongside Techne architects to imagine, plan and construct the lighting solutions that bring its many drinking and dining spaces to life.

From the entrance, the lights carry the same materiality and design intent throughout the space. Lighting varies from small, intimate settings to vast pools of light. It accents joinery and furniture, while providing a soft indirect glow to the common areas.

MaxiLED Small globe luminaries are being used to great effect to illuminate the internal roof structure to add to the ambience. One of the main benefits of **MaxiLED** Small globe is the capability of exceptionally long runs using a single low voltage power source. The addition of low maintenance and a 5 year warranty as standard reflects the quality and confidence we have on this product.



MaxiLED
Lighting

CHANGI AIRPORT, SINGAPORE.

MaxiPUNCH Bespoke DMX RGBW

Project specifications

IP68

RGBW

48V

CE

UKCA

5 Year Warranty

For full product specification see datasheet



Project Information

Client: Technolite

Location: Changi Airport - Singapore

Products Used: **MaxiPUNCH** Bespoke RGBW DMX

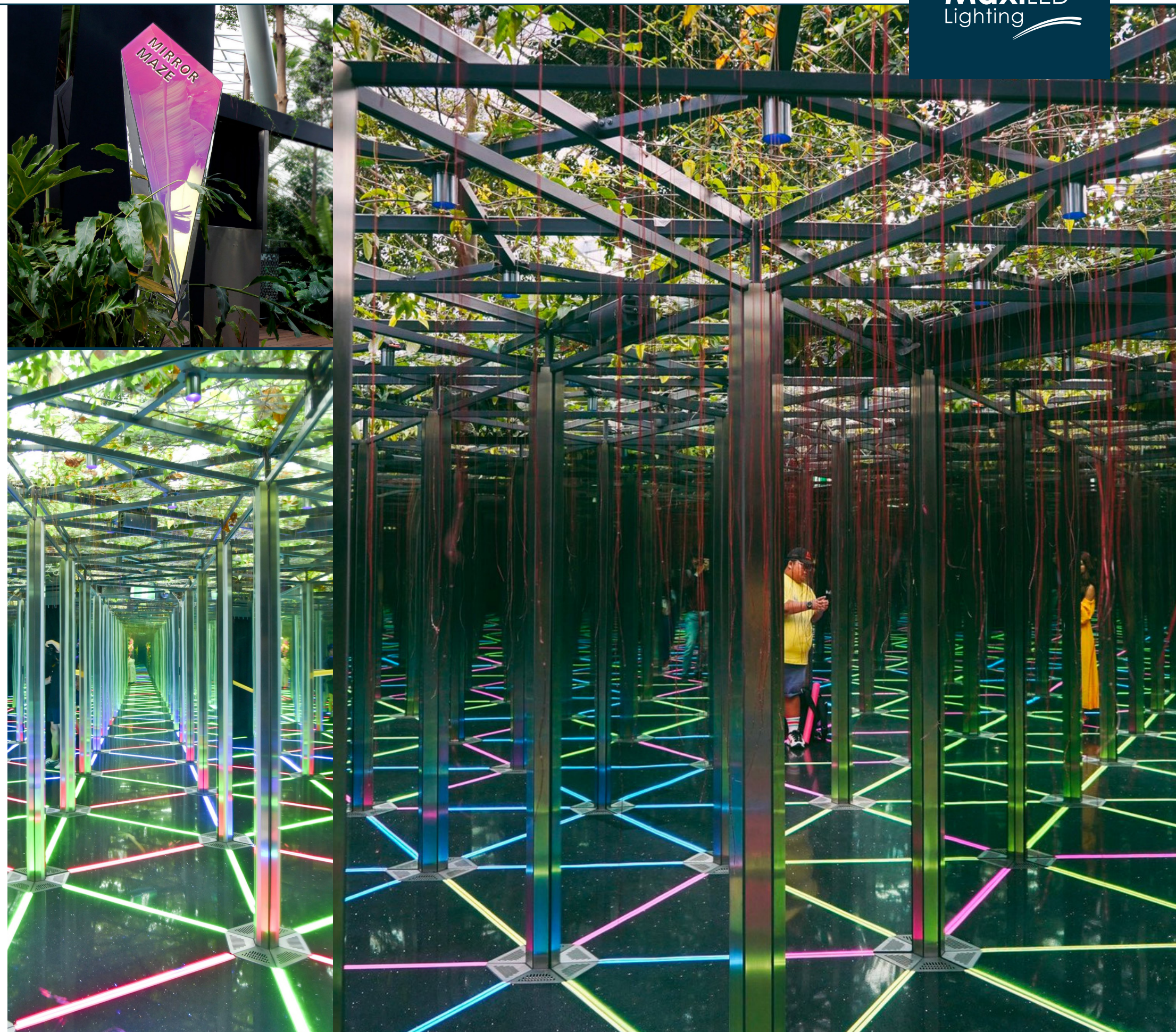
Controller Used: **MaxiLINK**

Background

Changi Airport in Singapore is celebrated for its extraordinary and immersive attractions, and among its standout features is the mesmerising mirror maze, enhanced by captivating lighting effects. This maze is a central highlight of the airport's extensive entertainment offerings, meticulously designed to offer a visually stunning and disorienting adventure.

At the heart of this visual marvel are the bespoke **MaxiPUNCH** 102 fixtures, renowned for their advanced design capabilities. Chosen for their advanced design features they are strategically positioned throughout the maze; these fixtures produce a striking colour-changing effect that adds depth and creates an atmosphere that is both enchanting and immersive. The dynamic lighting not only enhances the maze's visual appeal but also heightens its intrigue and challenge.

The choice of Bespoke **MaxiPUNCH** 102 fixtures was driven by their simplicity and innovative 2-wire data over power technology. This feature ensures straightforward installation and seamless integration into the existing infrastructure, avoiding the need for complex wiring or additional power sources. The ease of installation allowed for a smooth implementation, preserving the maze's aesthetic and functional integrity while delivering a flawless and captivating visual experience.



MaxiLED
Lighting

THE ARCADE, DEWSBURY ENGLAND. UK.

MaxiLED Large Globe DMX RGBW

Project specifications

IP68

IK07

RGBW

48V

CE

UKCA

5 Year Warranty

For full product specification see datasheet



Project Information

Client: Kirklees Council

Location: Dewsbury - United Kingdom

Products Used: **MaxiLED** Large Globe RGBW DMX

Controller Used: **MaxiLINK** and **Pharos**

Background

The Arcade in Dewsbury, a Victorian market hall with metal archway supports, needed a colourful lighting solution to brighten its otherwise dark interior during the night. **MaxiLED** was asked to supply this solution, and **MaxiLED** Large Globes were installed using temporary fixing methods. The colourful lighting not only enhances the visual appeal of the historic market hall but also creates a more inviting atmosphere for visitors after dark.

MaxiLED
Lighting



FALKIRK TUNNEL, SCOTLAND, UK.

MaxiLED Large Globe DMX RGBW

Project specifications

IP68

IK07

RGBW

48V

CE

UKCA

5 Year Warranty

For full product specification see datasheet



Project Information

Client: Scottish Canals - United Kingdom

Location: Falkirk, Scotland - United Kingdom

Products Used: **MaxiLED** Large Globe RGBW DMX

Controller Used: **MaxiLINK** and Pharos

Background

Falkirk Tunnel, a 690-yard passage carved out of solid rock with deep cuttings at both ends, features a towpath running through its length. The tunnel, which dates back to 1818, is part of the historic Union Canal and is located near the iconic Falkirk Wheel. Despite constant water seepage through its roof, this engineering marvel has stood the test of time.

Recently, Scottish Canals upgraded the tunnel's functional lighting to programmable white LEDs and sought to enhance the atmosphere with a dynamic RGBW LED system. **MaxiLED** collaborated with Scottish Canals to deliver a tailored lighting solution that could withstand the tunnel's challenging conditions while offering programmable flexibility. The **MaxiLED** RGBW Festoon was chosen for its IP68 and IK07 ratings, ensuring durability, and its straightforward installation using catenary cables minimised the need for extensive fixings. Additionally, a 3G remote access control interface was implemented, allowing the client to adjust lighting settings conveniently from their office or home via a mobile phone or laptop.

Scan to view
the video



MaxiLED
Lighting



PUBLIC SPACE

MaxiLED
Lighting



THAMES EMBANKMENT LONDON, ENGLAND. UK.

MaxiLED Large Globe Static 3000K

Project specifications

IP68

IK07

3000K

24V

CE

UKCA

5 Year Warranty

For full product specification see datasheet



Project Information

Client: Swann Lighting, London - United Kingdom

Location: River Thames Embankment, London - United Kingdom

Products Used: **MaxiLED** Large Globe Static

Background

MaxiLED Large Globe static lighting installed along the iconic River Thames Embankment, surrounded by renowned landmarks such as Tower Bridge, London Bridge, and the Tower of London. The decision to use this lighting solution was influenced by its low voltage requirements and robust design, suitable for year-round illumination in a high-profile location.

The 24V system spans over a distance of 500 meters, demonstrating the scalability and effectiveness of the lighting solution for covering large areas. Additionally, highlighting the low maintenance aspect, along with a 5-year warranty and a life expectancy of over 12 years, speaks to the reliability and durability of the product.

This project not only enhances the visual appeal of the River Thames Embankment but also demonstrates a commitment to sustainable and long-lasting lighting solutions for public spaces.

MaxiLED
Lighting



NORIE MILLER PARK, PERTH. SCOTLAND. UK.

MaxiPUNCH DMX RGBW

Project specifications

IP68

40°

RGBW

48V

CE

UKCA

5 Year Warranty

For full product specification see datasheet



Project Information

Client: Perth and Kinross Council

Location: Perth, Scotland - United Kingdom

Products Used: **MaxiPUNCH** 102 / 302 RGBW DMX

Controller Used: **MaxiLINK** and **Pharos**

Background

Perth – City of Light Framework: The City of Light Action Plan features a series of distinctive lighting projects designed to highlight Perth's cultural heritage, architecture, public spaces, and green areas. Collectively, these projects aim to enhance Perth's reputation as a vibrant, contemporary, and culturally rich city. Norie Miller Park, located on the eastern banks of the River Tay in Perth, Scotland, is named after Sir Stanley Norie-Miller, Bt, MC, DL, JP. The park stretches between Smeaton's Bridge to the north and Queen's Bridge to the south and is adorned with mature trees that create stunning avenues, interspersed with sculptures. Perth and Kinross Council's brief was to illuminate the park's pond and waterway with colour-changing lighting to enhance safety and encourage evening use of the walkways. The **MaxiPUNCH** product was chosen for its IP68 rating, which guarantees exceptional durability and water resistance. Its straightforward installation process also contributed to project efficiency. This lighting upgrade not only accentuates the park's natural beauty but also ensures a secure and welcoming environment for visitors after dark.

MaxiLED
Lighting



ALTON TOWERS, THEME PARK, ENGLAND. UK.

MaxiLED Large Globe Static Green

Project specifications

IP68

IK07

Static

24V

CE

UKCA

5 Year Warranty

For full product specification see datasheet



Project Information

Client: Merlin Entertainments

Location: Alton, Stoke-on-Trent - United Kingdom

Products Used: **MaxiLED Large Globe Static**

Background

At Alton Towers Theme Park, **MaxiLED Large Globe Festoon** lighting elegantly illuminates pathways and guides visitors through the park. The static-coloured lights enhance the ambience, enriching the surroundings and crafting a more immersive experience for guests. This lighting solution not only boosts visibility but also enhances the park's enchanting atmosphere, making it even more captivating, particularly after dark.

MaxiLED
Lighting



ICE HOUSE SQUARE, SWANSEA, WALES, UK.

MaxiDEPTH DMX RGBW

Project specifications

IP68

IK10

RGBW

48V

CE

UKCA

5 Year Warranty

For full product specification see datasheet



Project Information

Client: Swansea Council

Location: Swansea, Wales- United Kingdom

Products Used: **MaxiDEPTH** RGBW DMX

Controller Used: **MaxiLINK** and **Pharos**

Background

As day turns to night, this urban gem transforms into a dazzling wonderland, with lights that cast their enchantment over the entire square. The carefully arranged play of colours and patterns, enabled by the use of **MaxiDEPTH** 102 fixtures strategically placed to give the trees an ambience and colour-changing effect, creates an atmosphere that's nothing short of breathtaking.

These fixtures were chosen for their simplicity of the 2-wire data over power technology and ease of installation.

Whether you're enjoying a leisurely evening stroll or sipping a warm drink at a nearby café, the power of art and light turns the ordinary space into an extraordinary experience.

MaxiLED
Lighting



OBAN HARBOURSIDE, SCOTLAND, UK.

MaxiLED Large Globe DMX RGBW

Project specifications

IP68

IK07

RGBW

48V

CE

UKCA

5 Year Warranty

For full product specification see datasheet



Scan to view
the video



Project Information

Client: Argyll and Bute Council - United Kingdom

Location: Oban, Scotland - United Kingdom

Products Used: **MaxiLED** Large Globe RGBW DMX

Controller Used: **MaxiLINK** and Pharos

Background

The local council had envisioned a revitalisation of the front harbour and esplanade, featuring modern hard landscaping and updated lighting. A central element of this plan was the replacement of the existing festoon lighting, with the council seeking a design that would be "future-proof." They desired a programmable system that could adapt to events and significant occasions throughout the year.

LITE collaborated closely with the council's appointed consultant and contractor to develop a design centred around **MaxiLED** RGBW Festoon product. A significant challenge arose from the controller being positioned on one side of the road while the festoon lighting was on the other, with no feasible way to run CAT5 cabling between them. LITE proposed a wireless solution, which not only overcame this hurdle but also allowed the project to proceed without road closures, minimising disruption in the busy town. LITE worked hand-in-hand with the installation contractor throughout the project and ultimately commissioned the system on-site.



MaxiLED
Lighting

HUMBER STREET, HULL, ENGLAND. UK.

MaxiLED Large Globe Static 3000K

Project specifications

IP68

IK07

3000K

24V

CE

UKCA

5 Year Warranty

For full product specification see datasheet



Project Information

Client: Hull Council - United Kingdom

Location: Hull - United Kingdom

Products Used: **MaxiLED** Large Globe Static

Background

Our **MaxiLED** Lighting Static Globe was the ideal choice to revitalise the pavements of Hull. The festoon lighting adds vibrancy and warmth to the streets, creating an inviting atmosphere that benefits local businesses. This installation enhances the area's ambience, attracting visitors and fostering a lively community spirit. By improving the streets' aesthetic appeal, the **MaxiLED** Static Globe lights also support the local economy, making the area more enticing for shoppers and diners alike.

The Festoon product was selected for its IP68 and IK07 ratings, ensuring exceptional durability and resistance to water and impact. Additionally, its easy installation using catenary cable reduces the number of fixings needed, making the process more efficient and less disruptive. These features ensure that the lighting not only meets practical needs but also provides a sustainable, long-lasting solution for the community.



MaxiLED
Lighting

MERMAID QUAY, CARDIFF, WALES. UK.

MaxiLED Large Globe DMX RGBW

Project specifications

IP68

IK07

RGBW

48V

CE

UKCA

5 Year Warranty

For full product specification see datasheet



Project Information

Client: Arup - United Kingdom

Location: Cardiff, Wales - United Kingdom

Products Used: **MaxiLED** Large Globe RGBW DMX

Controller Used: **MaxiLINK** and **Pharos**

Background

Mermaid Quay is a waterfront shopping and leisure district in the Cardiff Bay area of Cardiff, Wales. The 14,000 m2 development was opened in 1999 and includes restaurants, bars, cafes, and shops.

When the area was in need of a new lighting scheme, our **MaxiLED** Large Globe LEDs were specified by Arup, a leading lighting design and advisory practice. The new colourful scheme zig-zags across the streets and is controlled using a 4G network controller.

Now, the area is illuminated with vibrant lighting, making it more appealing and inviting for visitors. The festoon lighting creates an attractive and welcoming setting for local businesses, enhancing the area's ambience. This installation draws in visitors and fosters a lively community atmosphere. The use of **MaxiLED** DMX RGBW Globe lights not only improves the aesthetic appeal but also supports the local economy by making the streets more appealing for shoppers and diners.

MaxiLED
Lighting



TAXINGEPLAN, STOCKHOLM, SWEDEN

MaxiLED Large Globe DMX RGBW

Project specifications

IP68

IK07

RGBW

48V

CE

UKCA

5 Year Warranty

For full product specification see datasheet



Project Information

Client: Stockholm Lighting - Sweden

Location: Stockholm - Sweden

Products Used: **MaxiLED** Large Globe RGBW DMX

Controller Used: **MaxiLINK** and Pharos

Background

In the Tensta district of Stockholm, Sweden, the central square and taxi rank outside the shopping centre, Taxingeplan, had long been regarded as an unsafe area, partly due to its secluded location and limited visibility. To address these concerns, the City Council of Stockholm launched a regeneration project aimed at transforming the square. The primary goals were to enhance visitor safety, introduce green spaces, improve traffic safety, and provide better lighting.

Today, the square is illuminated by a stunning "starry sky" created by festoons of coloured lights, which serve both as a visual attraction and as essential lighting during nighttime hours. To achieve this inviting and majestic atmosphere, Stockholm Lighting specified the use of **MaxiLED** Lighting Globe Series luminaires. These exceptionally long strands of globe-lensed LEDs are designed to withstand harsh conditions, offering both durability and longevity. With rugged, injection-moulded outer globes and heavy-gauge wiring, they combine form and function, delivering a striking star-like effect that enhances the square's appeal.



MaxiLED
Lighting

WIND STREET, SWANSEA, WALES. UK.

MaxiLED Large Globe DMX RGBW

Project specifications

IP68

IK07

RGBW

48V

CE

UKCA

5 Year Warranty

For full product specification see datasheet



Project Information

Client: Swansea Council - United Kingdom

Location: Swansea, Wales - United Kingdom

Products Used: **MaxiLED** Large Globe RGBW DMX

Controller Used: **MaxiLINK** and **Pharos**

Background

Wind Street in Swansea city centre has long been a lively hub for the night-time economy. Now, following a £2 million upgrade, the area has been revitalised to become a welcome destination throughout the day as well, offering family-friendly activities, dining options, and cosy spots for coffee. As part of this transformation, lighting specialists LITE were commissioned to implement a new LED lighting scheme, which played a key role in giving Wind Street its fresh, inviting look.

The trees lining the street have been pollarded, allowing for both practical and decorative illumination. LITE specified 1,760 large globes from **MaxiLED**, which not only bathe the street in a beautiful glow after dark but also create an inviting and uplifting atmosphere during the day, enhancing the street's appeal around the clock.



MaxiLED
Lighting

Scan to view
the video



LIVERPOOL TREES, ENGLAND. UK.

MaxiLED Small Globe Static 3000K

Project specifications

IP68

IK07

3000K

24V

CE

UKCA

5 Year Warranty

For full product specification see datasheet



Project Information

Client: Amey

Location: Liverpool, England - United Kingdom

Products Used: **MaxiLED** Large/Small Globe static 3000K

Background

Liverpool City Council enlisted LITE to replace a low-end MiniLED system with a permanent lighting solution for the city's trees. Their objective was to create a durable, year-round lighting installation that would operate the full 365 days a year, providing a warm and inviting ambience in the city centre.

One challenge was the council's strict policy of using only 24V lighting for trees, which required a balance between achieving a striking visual effect and ensuring the longevity of the system. Alan Jones, representing the council through Amey, approached LITE to explore our **MaxiLED** large and small globe festoon products. These were selected for their superior manufacturing quality, bright 24V LEDs, IP68 rating, and an unmatched 5-year manufacturing warranty. LITE's ability to produce custom sizes and quantities, rather than relying on off-the-shelf solutions, further distinguished our offering.

The feedback from the council has been overwhelmingly positive, highlighting the significant impact our lighting has made throughout the city. This success has also led to new projects with private companies in Liverpool, who are now utilising the same products.

MaxiLED
Lighting



DARWEN MARKETS, ENGLAND. UK.

MaxiDEPTH DMX RGBW

Project specifications

IP68

IK10

RGBW

48V

CE

UKCA

5 Year Warranty

For full product specification see datasheet



Project Information

Client: Blackburn with Darwen Borough Council

Location: Darwen, Lancashire - United Kingdom

Products Used: **MaxiDEPTH** RGBW DMX

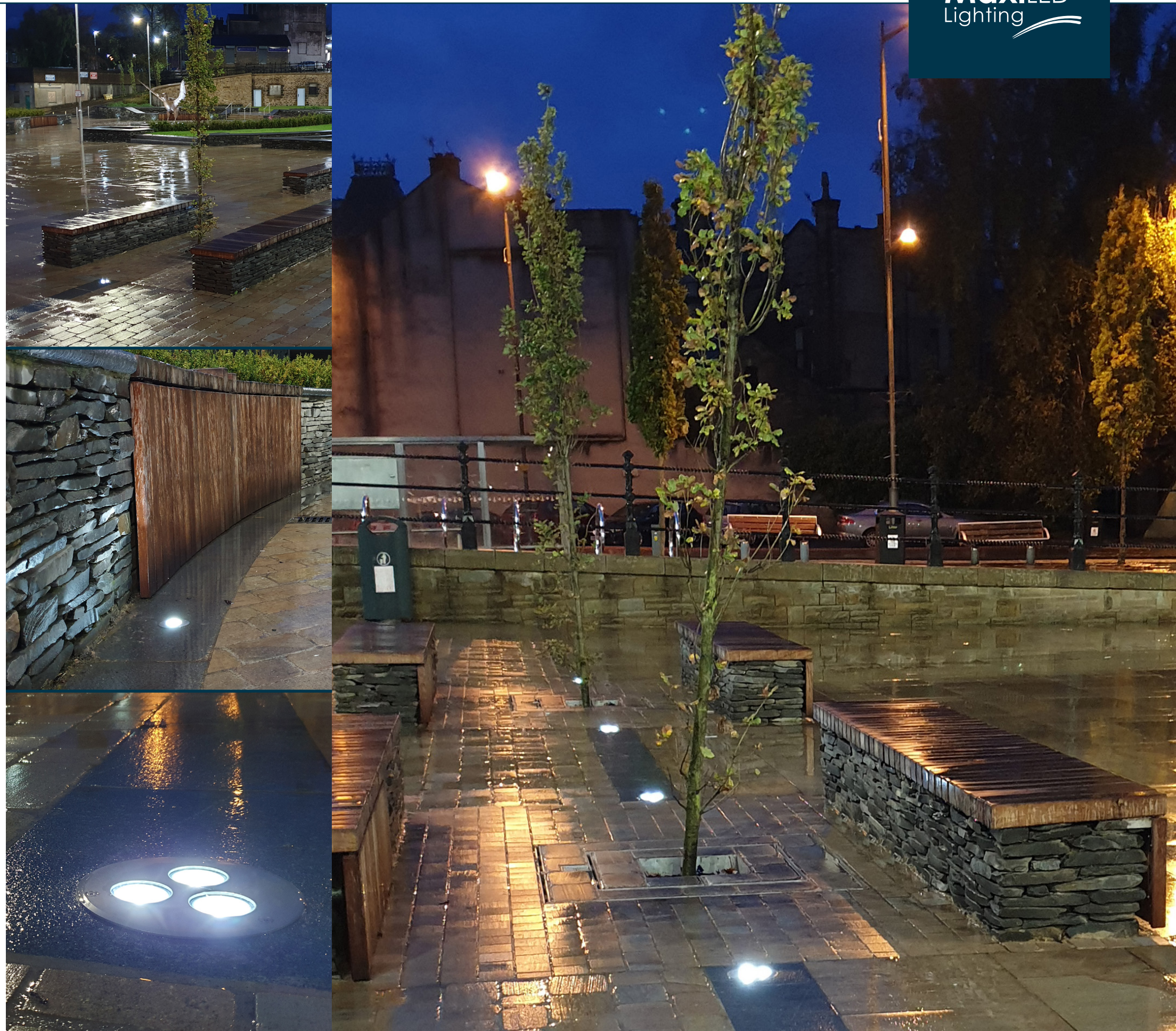
Controller Used: **MaxiLINK** and **Pharos**

Background

The Darwen markets regeneration project includes new seating and relaxing areas, newly planted trees, and great views of the iconic Darwen Tower.

MaxiDEPTH 102 and 302 were chosen for this project due to their easy installation and **MaxiLED** 2-core data over power technology, which simplifies both installation and maintenance. The IP68 fixtures provide full RGBW capabilities and can be controlled using 4G technology.

For the majority of the time, the lights are left on a static cool white, creating a clean and inviting atmosphere. However, colour can be added for special occasions, allowing for dynamic and festive displays that enhance the market's ambience and attract visitors.



MaxiLED
Lighting

NORIE MILLER PARK, PERTH, SCOTLAND, UK.

MaxiLED Large Globe DMX RGBW

Project specifications

IP68

IK07

RGBW

48V

CE

UKCA

5 Year Warranty

For full product specification see datasheet



Project Information

Client: Perth and Kinross Council

Location: Perth, Scotland - United Kingdom

Products Used: **MaxiLED** Large Globe RGBW DMX

Controller Used: **MaxiLINK** and Pharos

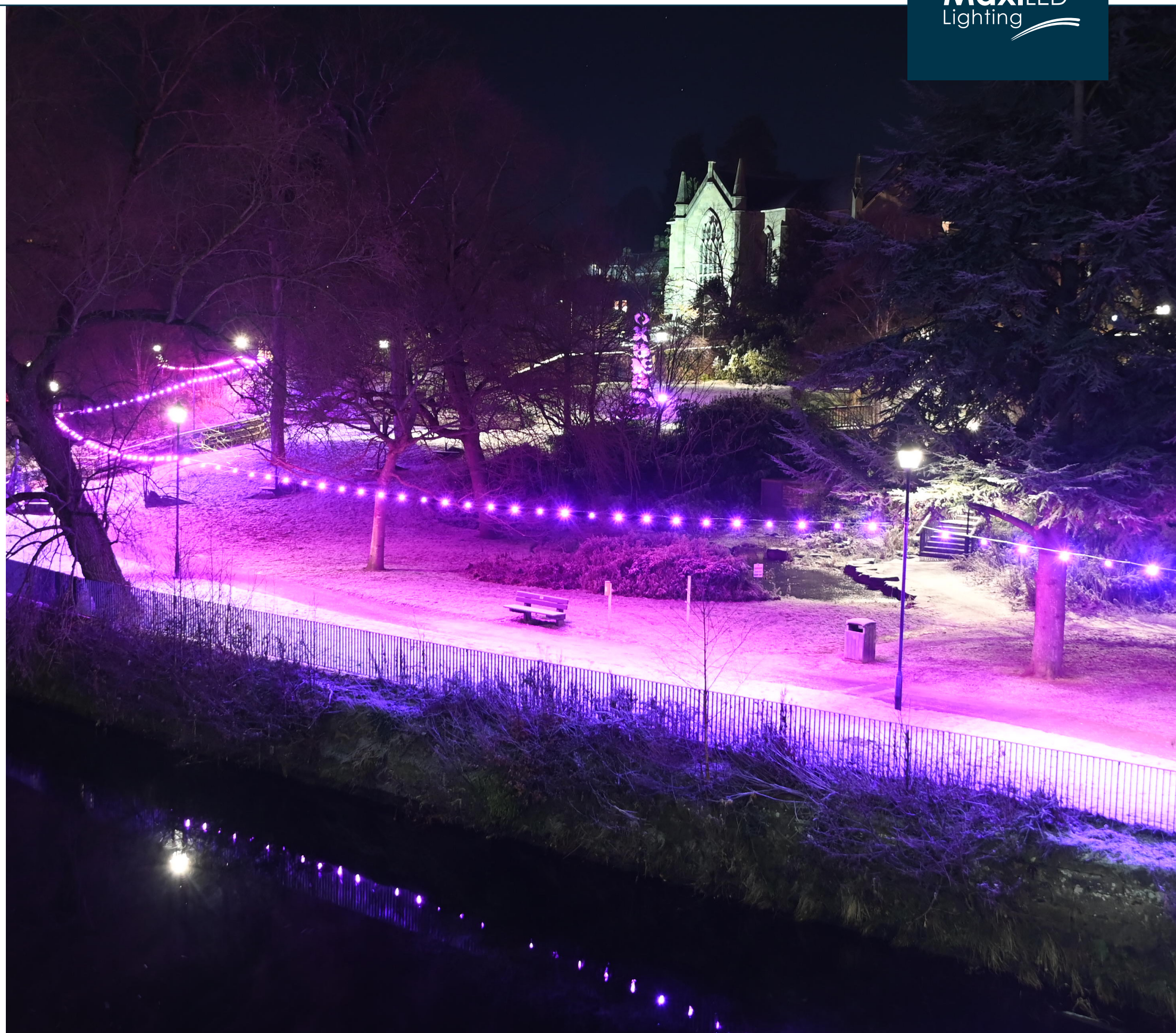
Background

Perth – City of Light framework: The City of Light Action Plan outlines a series of unique lighting projects which, when combined, will promote Perth's unique cultural heritage, architecture, public realm, and greenspace. This initiative reinforces Perth's status as a young, vibrant, and cultural city.

Norie Miller Park is an urban park in the Scottish city of Perth, located on the eastern banks of the River Tay. Named for Sir Stanley Norie-Miller, it is situated between Smeaton's Bridge to the north and Queen's Bridge to the south. The park is lined with mature and established trees, creating magnificent avenues, with sculptures scattered within its boundaries.

Perth and Kinross Council needed to illuminate the pathways and sought a creative solution to make the walkways feel safe in the evenings and encourage public use. The **MaxiLED** festoon product was selected specifically for its IP68 and IK07 ratings, ensuring high durability and resistance to water and impact. Additionally, the easy installation method using catenary cable significantly reduces the number of fixings required, making the installation process more efficient and less intrusive. This choice enhances the park's beauty while providing a safe and inviting environment for evening visitors.

MaxiLED
Lighting



ROBERTSON PARK, RENFREW, SCOTLAND. UK.

MaxiLED Large Globe Static 2700K

Project specifications

IP68

IK07

2700K

24V

CE

UKCA

5 Year Warranty

For full product specification see datasheet



Project Information

Client: Renfrewshire council

Location: Robertson Park, Renfrew, Scotland - United Kingdom

Products Used: **MaxiLED** Large Globe static 2700K

Background

Robertson Park opened in 1912 as an open space for the children of Renfrew. It was gifted to the Royal Burgh of Renfrew by William Robertson, a successful local businessman. The park offers various amenities and activities for the general public, including a duck pond, floral gardens, BMX course, skateboard park, tennis courts, bowling green, sensory garden, cycle tracks, swing parks, and a small animal enclosure. The walkways are lined with mature and established trees, creating magnificent avenues.

Renfrewshire Council needed to illuminate the main "Avenue of Trees" and sought a creative solution to make the walkways feel safe in the evenings and encourage public use. The **MaxiLED** Festoon product was selected specifically for its IP68 and IK07 ratings, ensuring high durability and resistance to water and impact. Additionally, the easy installation method using catenary cable significantly reduces the number of fixings required, making the installation process more efficient and less intrusive. This choice enhances the park's beauty while providing a safe and inviting environment for evening visitors.

MaxiLED
Lighting



PORT ERIN, ISLE OF MAN.

MaxiLED Large Globe Static Multi coloured

Project specifications

IP68

IK07

Multi
Coloured

24V

CE

UKCA

5 Year Warranty

For full product specification see datasheet



Project Information

Client: Isle of Man Government

Location: Port Erin, Isle of Man.

Products Used: **MaxiLED** Large Globe static Multi coloured

Background

The Isle of Man Government approached LITE with a project to replace Port Erin's coastal walkway lighting, spanning over 800 meters, with a new low-voltage product capable of withstanding the harsh weather conditions from the Irish Sea. The objective was to implement a colourful, low-voltage festoon robust enough to handle the extreme weather, providing a permanent, all-year-round lighting solution for the coast of Port Erin, Isle of Man. This lighting system would be used 365 days per year.

Our **MaxiLED** Large Globe Static Festoon product was specified for this project due to its bright LEDs at 24V, IP68 rating, and unmatched manufacturing warranty of 5 years. These features ensure that the lighting not only meets practical needs but also provides a sustainable and durable solution capable of withstanding the challenging coastal environment.

MaxiLED
Lighting



BLACKPOOL, ENGLAND, UK.

MaxiLED Large Globe DMX RGBW

Project specifications

IP68

IK07

RGBW

48V

CE

UKCA

5 Year Warranty

For full product specification see datasheet



Project Information

Client: Blackpool Borough Council - United Kingdom

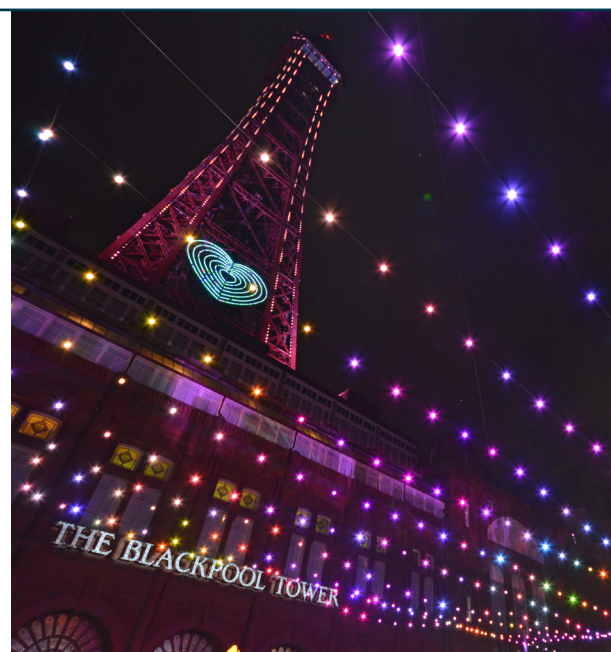
Location: Blackpool, England - United Kingdom

Products Used: **MaxiLED** Large Globe RGBW DMX

Controller Used: **MaxiLINK** and **Pharos**

Background

The team at **MaxiLED** Lighting were given the grand task of illuminating the main section of the Blackpool Illuminations, below the world-famous Blackpool Tower. The brief from the client was to create a colour-changing spectacle. The design team proposed using the **MaxiLED** Lighting Large Globe Strand - RGBW DMX. This product can be fully programmable, allowing the programmer to individually control any colour from the RGBW spectrum on every individual lamp. One of the main focuses was to tantalise passersby in cars and walkers alongside the 300-meter stretch of waterfront using 3000 Individual LED Lamps. The environment played a major factor in choosing **MaxiLED** Lighting Large Globe Strand as this is rated IP68. With unique data over power, weight was kept to a minimum by using a single cable only.



MaxiLED
Lighting

Scan to view
the video



CARLOW, IRELAND.

MaxiLED Large Globe DMX RGBW

Project specifications

IP68

IK07

RGBW

48V

CE

UKCA

5 Year Warranty

For full product specification see datasheet



Project Information

Client: Fantasy Lights - Ireland

Location: Carlow - Ireland

Products Used: **MaxiLED** Large Globe RGBW DMX

Controller Used: **MaxiLINK** and **Pharos**

Background

The charming and picturesque town of Carlow, Ireland, is rich with history, stunning scenery, and vibrant culture. From the beautiful River Barrow to the rolling hills of the countryside, there is something for everyone. No wonder we couldn't wait to make the streets shine!

Working alongside our Ireland distributors, Fantasy Lights, **MaxiLED** Lighting supplied over 250 **MaxiLED** Large Globe DMX RGBW lights, all controllable using 4G Technology. Each strand is built for permanent installations, featuring rugged, injection-molded outer globes, heavy gauge wiring, and dependable CREE LEDs. These features ensure durability and reliability, making them ideal for harsh weather applications.

The next time you are immersed in the local culture, you'll see just how we've added to the welcoming atmosphere with our dynamic and colourful lighting installations.



MaxiLED
Lighting

LANDMARKS AND SCULPTURES

MaxiLED
Lighting



SALTBURN PIER, ENGLAND. UK.

MaxiLED Large Globe DMX RGBW

Project specifications

IP68

IK07

RGBW

48V

CE

UKCA

5 Year Warranty

For full product specification see datasheet



Scan to view
the video



Project Information

Client: Redcar and Cleveland Council - United Kingdom

Location: Saltburn Pier, England - United Kingdom

Products Used: **MaxiLED** Large Globe RGBW DMX

Controller Used: **MaxiLINK** and Pharos

Background

Standing proudly in North Yorkshire, Saltburn Pier is a historic landmark with roots dating back to 1867. First commissioned in 1867 and completed two years later, this iconic structure has endured for over a century. To modernise the pier's lighting, an LED system was chosen over traditional light sources, offering not only greater durability and reduced maintenance but also the versatility of a controllable RGBW system. **MaxiLED** DMX RGBW globes, specified by LITE, the UK partner for **MaxiLED**, were selected for the project by Redcar and Cleveland Council, in collaboration with PFI contractor Bouygues.

The lighting design aimed to subtly and elegantly enhance the pier's architecture, and the DMX RGBW globes were perfectly suited to the task. Installed in two 250-meter runs with the globes positioned 6 meters above the pier, they create a stunning illumination of the structure, sand, and sea. Over 500 luminaires offer flexible control over colour and intensity, managed through the system specified by LITE.

This modern lighting setup has significantly reduced power consumption, with the **MaxiLED** globes drawing only 1.2 kW compared to the previous system's 5 kW. This substantial energy saving ensures the council can enjoy lower running costs and greater energy efficiency for the pier.

MaxiLED
Lighting



ARDBEG DISTILLERY, ISLAY, SCOTLAND, UK.

MaxiDEPTH DMX RGBW

Project specifications

IP68

IK10

RGBW

48V

CE

UKCA

5 Year Warranty

For full product specification see datasheet



Scan to view
the video



MaxiLED
Lighting

Project Information

Client: Ardbeg Distillery

Location: Isle of Islay, Scotland - United Kingdom

Products Used: **MaxiDEPTH** RGBW DMX

Controller Used: **MaxiLINK** and **Pharos**

Background

On the Hebridean Island of Islay, the Ardbeg Distillery celebrated its 200th anniversary with a significant upgrade to its visitor centre. This included a renovation of the main entrance and the addition of **MaxiLED** in-ground fittings to highlight the new staircase, as well as ColourBurst to illuminate the historic copper whisky still. All lighting fixtures are controlled via an iPlayer3 controller.

The primary objective for the **MaxiLED** lighting team was to enhance the visitor entrance with a robust LED lighting solution, mindful of Islay's harsh and unpredictable weather conditions. To address the challenge of potential water ingress, the team selected the RGBW (DMX) **MaxiLED** spotlight series, which is IP68-rated for superior durability. The system's unique data-over-power capability allowed for minimal wiring, using only a single cable. Additionally, the fully programmable system enables precise control of any colour within the RGBW spectrum for each individual lamp.



SW1 TELFORD,
ENGLAND. UK.

MaxiPUNCH DMX RGBW

Project specifications

IP68

15°

RGBW

48V

CE

UKCA

5 Year Warranty

For full product specification see datasheet



Project Information

Client: Telford Council

Location: Telford - United Kingdom

Products Used: **MaxiPUNCH** RGBW DMX

Controller Used: **MaxiLINK** and Pharos

Background

As part of the development of SW1 Southwater, the council wanted to combine the architectural lighting elements of the SW1 building and the new Travelodge hotel. Bringing together the landscaping elements which included specially designed etched totems and tree uplighting. Due to the location and distances involved LITE suggested the Low Voltage **MaxiPUNCH** 102 RGBW luminaries, using adjustable wall bracket mounts to highlight the internal portion of the totems and the recessed variant to uplight the trees. A Pharos controller is located within the plant room of the hotel and is linked to SW1 for seamless Co-ordination of the lighting shows. With the Pharos controller wired to the network, this gives the flexibility to be controlled from any network access around the world.



MaxiLED
Lighting

HALO, ROSSENDALE ENGLAND. UK.

MaxiLED Small Globe Static BLUE

Project specifications

IP68

IK07

BLUE

24V

CE

UKCA

5 Year Warranty

For full product specification see datasheet



Project Information

Client: Lighting and Building Services Ltd

Location: Rossendale, England - United Kingdom

Products Used: **MaxiLED** Small Globe Static Blue

Background

Halo is an 18m-diameter steel lattice structure, standing on a tripod five metres above the ground on top of Top o'Slate, a former landfill site in the hills above Haslingden in the Rossendale Valley. Halo is part of the REMADE in Lancashire programme, a scheme led by Rossendale Borough Council and Groundwork Pennine Lancashire, to reclaim and return to public use 33 hectares of land. Rossendale Council appointed Lighting and Building Services Ltd to create the lighting design, and Dave Laraway of Lighting & Building Services Ltd specified LITE to supply the lighting on the Halo from their extensive portfolio of products and solutions.

LITE selected **MaxiLED** Small Globe series to fit the design brief. 700 of the luminaires in a static blue were fixed to the Halo, creating a stunning, sky-blue glow after dark. As Halo is elevated on a tripod on its high vantage point, the light gives the effect that the structure is hovering above the town. The low-energy LEDs are powered by a wind turbine, using green energy to minimise light pollution and avoid any disruption to the local wildlife in the area. The well-lit Halo, elevated from its high position shines above the town, serving as a beacon, welcoming visitors arriving on the A56 to Lancashire. It welcomes people to the local area and reflects on the beauty and natural resource of the town, combining elements of both the urban and rural landscape.

MaxiLED
Lighting



Scan to view
the video



BAY WEST MALL, NELSON MANDELA BAY PORT ELIZABETH, SOUTH AFRICA.

MaxiPUNCH 302 Static 3000K

Project specifications

IP68

IK07

3000K

24V

CE

UKCA

5 Year Warranty

For full product specification see datasheet



Project Information

Client: SSLI - South Africa

Location: Port Elizabeth - South Africa

Products Used: **MaxiPUNCH 302 Static 3000K**

Background

Bay West Mall was completed in mid 2015 and is conveniently situated alongside the N2 freeway into Port Elizabeth's western suburbs.

In March 2015 the Baywest Mall launched an urban art campaign which kicked off with a competition calling on artists to come up with ideas for an innovative and unique 7m-tall sculpture.

The winners of the campaign were artist Louwrens Westraad and Mxolisi "Dolla" Sapeta. Their winning concept titled Ujiva (dancing), the 7m-tall Ujiva is hard to miss as you approach the end of Walker Drive.

At night, it comes alive as it is illuminated by low voltage **MaxiPUNCH** Static fittings and when the city's infamous westerly wind hits the steel frames, a musical range of four octaves is emitted.

SSLI in consultation with LITE specified the **MaxiPUNCH** mono white (3000k) 12w but required the LED to be 24v while retaining the tight compact profile form and IP68 integrity. A single 285w PV panel and 4 x 12v 100Ah battery systems with solar charge controller are all designed into the artwork frame or base so as not to distract from the artists work.



MaxiLED
Lighting

THE CAVERN QUARTER, LIVERPOOL, ENGLAND. UK.

MaxiPUNCH Static 3000K

Project specifications

IP68

40°

3000K

48V

CE

UKCA

5 Year Warranty

For full product specification see datasheet



Project Information

Client: Liverpool BID

Location: Liverpool - United Kingdom

Products Used: **MaxiPUNCH** Static 3000K

Controller Used: **MaxiLINK** and **Pharos**

Background

Located in the Cavern Quarter at the heart of the city, notable as the location of the new Cavern Club, Mathew Street is Liverpool's most famous street. The street hosts thousands of tourists a year who visit the attractions and references to the Beatles, who played in the original Cavern Club on numerous occasions in their early career. The area is used to celebrate Liverpool's musical heritage, with statues, stores, and the Liverpool Beatles Museum dedicated to the band. The area is a hotspot for bars and pubs, and the streets are often full of locals and tourists. The five Cavern Quarter Archways which decorate and signpost the entrances to the Cavern Quarter have been fully restored and enhanced.

Liverpool BID Company appointed LITE Architectural to supply the lighting solutions from their extensive portfolio of products.

MaxiPUNCH 102 in static 3000K light was selected as a compact central design spotlight to highlight the name plate of Mathew Street and The Cavern Quarter, controlled by a Philips iPlayer 3 Controller. The bright white lights accentuate the sign writing and signage, and the lighting design highlights the gateways to draw people to them, showcasing the area from the main street to encourage visitors.

MaxiLED
Lighting



BARTON GRANGE, ENGLAND. UK.

MaxiPUNCH DMX RGBW

Project specifications

IP68

40°

RGBW

48V

CE

UKCA

5 Year Warranty

For full product specification see datasheet



Project Information

Client: Barton Grange

Location: Preston - United Kingdom

Products Used: **MaxiPUNCH** RGBW DMX

Controller Used: **MaxiLINK** and **iPlayer**

Background

Barton Grange Garden Centre offers inspirational ideas for gardens, decorative homeware and gifts, great food, and more. When a water sculpture needed highlighting, the **MaxiPUNCH** 102 fixtures were chosen for the project due to their easy installation and **MaxiLED** 2-core data over power technology, which simplifies both installation and maintenance. The IP68 fixtures provide full RGBW capabilities and can be controlled using 4G technology.

The colour-changing lighting allows for dynamic displays that enhance the ambience of the garden centre and attract visitors, creating a vibrant and engaging atmosphere.

MaxiLED
Lighting



ELECTRIC RAILWAY ISLE OF MAN.

MaxiLED Large Globe Static 10,000K

Project specifications

IP68

IK07

10,000K

24V

CE

UKCA

5 Year Warranty

For full product specification see datasheet



Project Information

Client: Douglas Borough Council

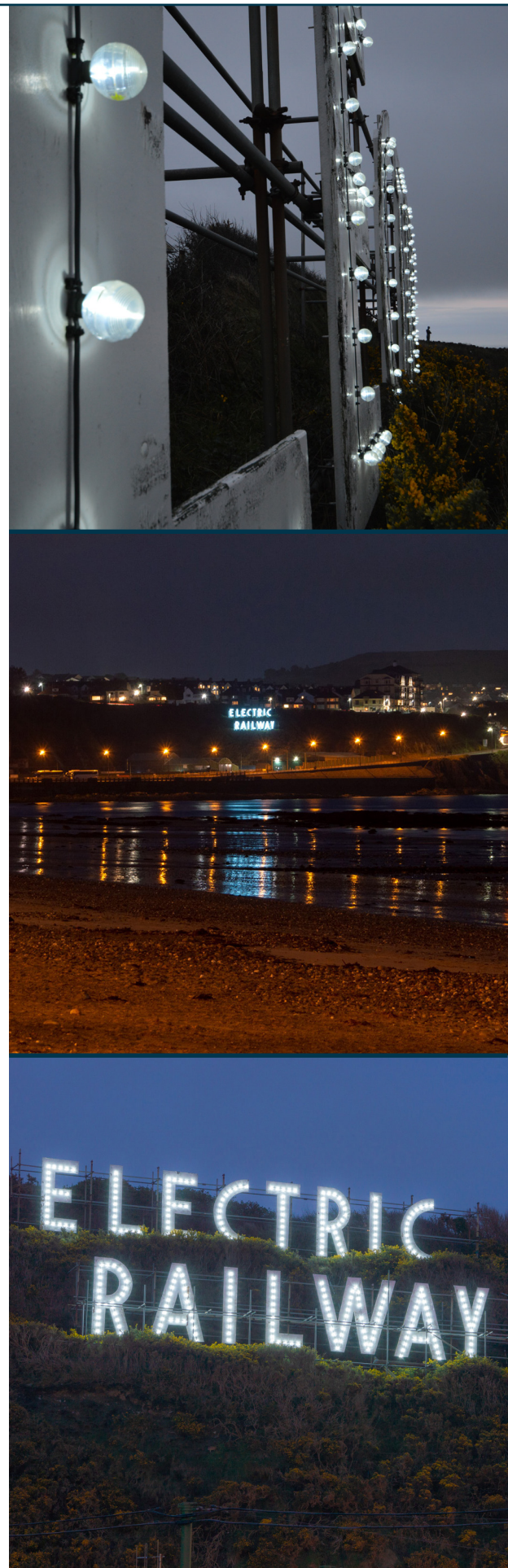
Location: Isle of Man

Products Used: **MaxiLED** Large Globe Static

Background

The Manx Electric Railway is an electric interurban tramway connecting Douglas, Laxey, and Ramsey in the Isle of Man. It connects with the Douglas Bay Horse Tramway at its southern terminus at Derby Castle at the northern end of the promenade in Douglas, and with the Snaefell Mountain Railway at Laxey. Many visitors take an excursion on the trams, as it is the oldest electric tram line in the world whose original rolling stock is still in service.

Visible from across the bay of Douglas, Isle of Man, the words 'Electric Railway' were illuminated using our **MaxiLED** Large Globe Static lights. The festoon product was selected specifically because of its IP68 and IK07 ratings, which ensure high durability and resistance to water and impact. This installation not only enhances the visibility and charm of the railway but also ensures longevity and resilience in the coastal environment.



MaxiLED
Lighting

PRESCOT TRAIN STATION, ENGLAND, UK.

MaxiDEPTH Static

Project specifications

IP68

IK10

4000K

48V

CE

UKCA

5 Year Warranty

For full product specification see datasheet



Project Information

Client: Prescott Train Station

Location: Prescott - United Kingdom

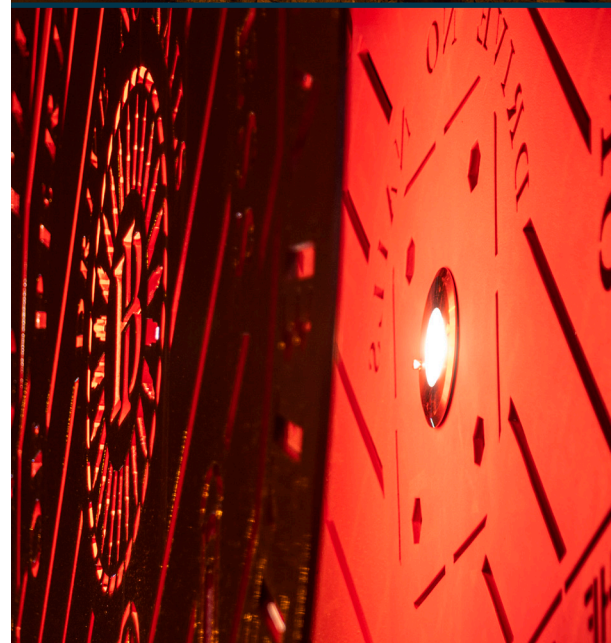
Products Used: **MaxiDEPTH** Static

Background

Nestled within the Borough of Knowsley in Merseyside, is the small town of Prescott. As part of a wider programme of works celebrating the townships of Knowsley Metropolitan Borough Council, four new eye-catching pieces of public art have been installed in Prescott. Their aim is to provide a warm welcome to the town, having been strategically placed on key gateway positions leading into and out of the town.

The artwork was designed by artist Martin Herron following extensive consultation with the local community, as well as the involvement of two local primary schools. The fourth and final art installation is located at Prescott train station. This piece reflects Prescott's rich industrial history, including the crafts of watchmaking, pottery and mining.

To illuminate the artwork during the hours of darkness, a custom-made solution from **MaxiLED** has been specified. Based on a **MaxiDEPTH** 102, the solution offers static white 4000K and a diffusing lens to fit into the artwork. The light source fixture has been carefully developed to offer a discreet solution, so viewers of the artwork see the installation and not the light fitting.



MaxiLED
Lighting

URSVIK,
STOCKHOLM. SWEDEN.

MaxiLED Large Globe Static 4000K

Project specifications

IP68

IK07

4000K

24V

CE

UKCA

5 Year Warranty

For full product specification see datasheet



Project Information

Client: Stockholm Lighting - Stockholm

Location: Ursvik - Stockholm

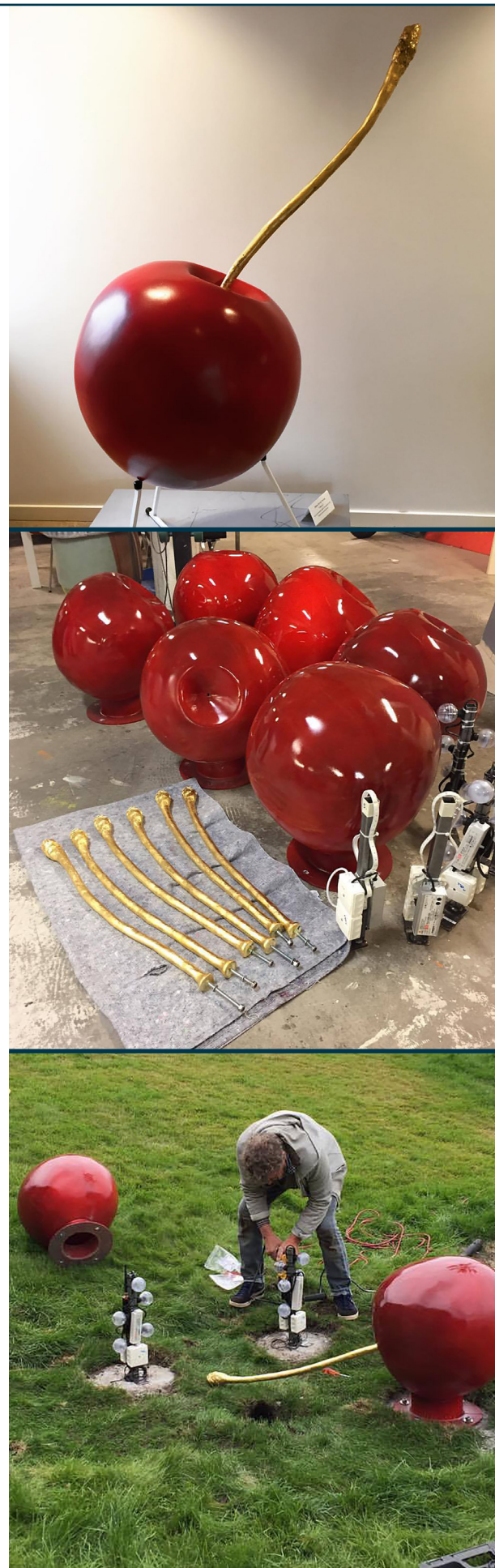
Products Used: **MaxiLED** Large Globe static

Background

Johan Ferner Ström has created delicious brilliant light sculptures for the open lawn areas between the properties in the residential area Ursvik. Customers are SKB who invest heavily in art in their residential areas. Stockholm Lighting has delivered a dynamic lighting solution that gives life to the sculpture.

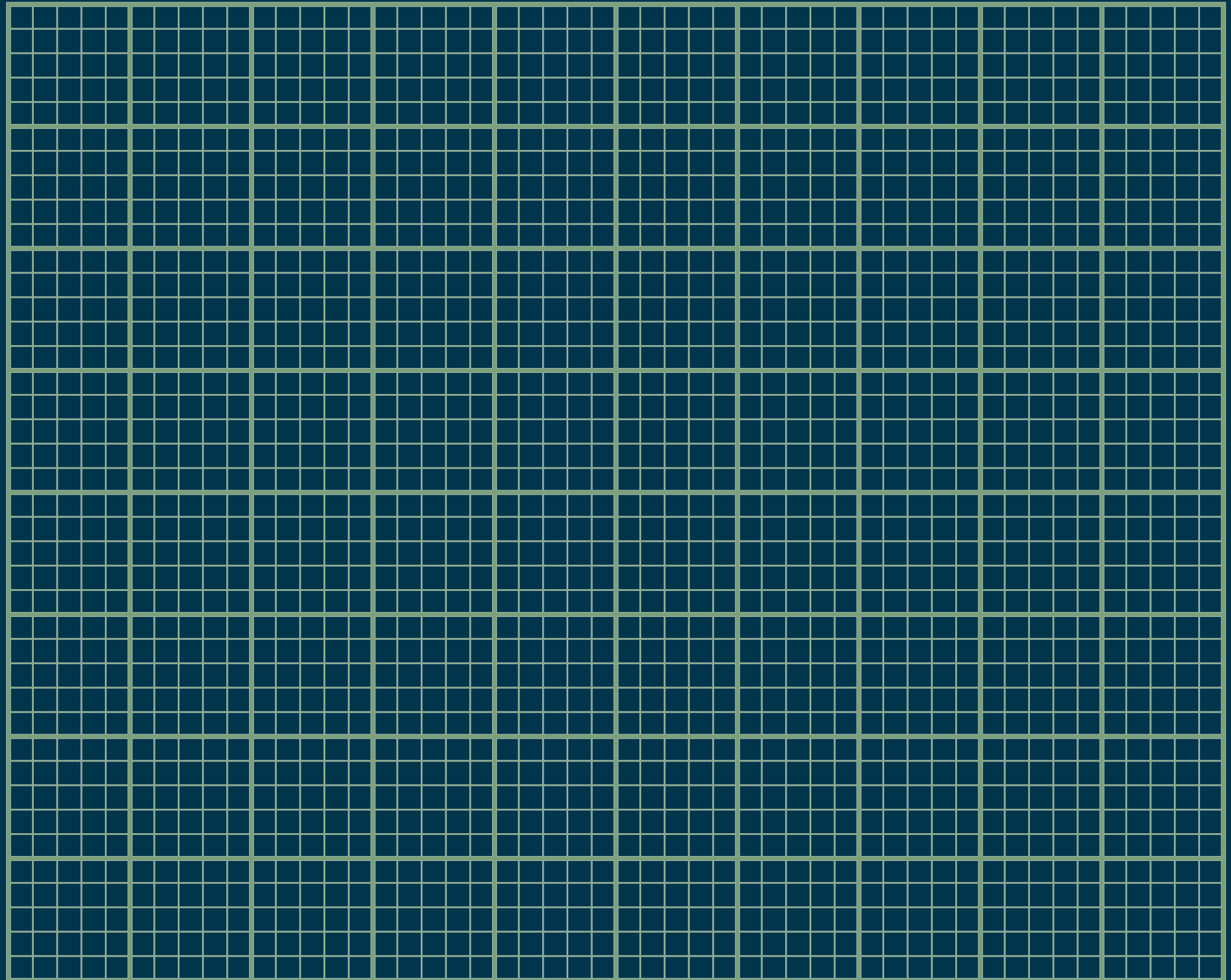
Artist, project leader and designer. Johan has completed several major art installations in public space, in institutions and in galleries. He has a thorough knowledge of the artistic process, design, urban development and environmental analysis.

"I have worked with several major art projects in public space. The effects of these projects has resulted in considerable interest in the urban development process and the structural changes that occur in an area when you dare to think differently".



MaxiLED
Lighting

BESPOKE AND RETROFIT



BESPOKES

HOUSTON SQUARE,
JOHNSTONE, RENFREWSHIRE
SCOTLAND, UK.

MaxiLED GU10 Retrofit Bespoke DMX RGBW

Project specifications

IP66

IK07

RGBW

48V

CE

UKCA

5 Year Warranty

For full product specification see datasheet

Project Information

Client: Renfrewshire Council

Location: Renfrewshire, Scotland - United Kingdom

Products Used: **MaxiLED** GU10 Retrofit Bespoke RGBW DMX

Controller Used: **MaxiLINK** and **Pharos**

Background

Johnstone is a small town sitting just on the outskirts of Paisley in Renfrewshire. In the centre of the town is a large public space – Houston Square, named after the Laird, George Houston, who commissioned its design and construction in the late 18th century.

Positioned towards the lowest part of the square there is a magnificent Bandstand, which was gifted to the town by the Laird George Ludovic Houston in 1891. A war memorial stands at the opposite end of the space and there are raised beds surrounding with mature tree within.

Renfrewshire Council approached Lite Ltd to look at the possibility of making the space a more attractive and inviting public space in the darker nights using “Dynamic LED technology” and with a remote access control capability.

The three areas to focus on were the Bandstand, the War Memorial and the surrounding Trees.

The bandstand already had some 32 recessed downlights installed into the ceiling of the roof. The proposal would be to re-use the main body of these luminaires but to introduce and accommodate **MaxiLED**'s GU10 RGBW lamp. The bezel's would be refurbished and the fittings rewired to allow a new dynamic ceiling. 16 new surface mounted RGBW spotlights from **MaxiLED** were positioned on the edge of the soffit, either side of each metal column. These would pick out and highlight the column head details and also throw a pool of light on to the surrounding ground space. All the fixtures were controlled using a **Pharos** LPC with 4G Remote Access.



MaxiLED
Lighting

BESPOKES

ARDBEG DISTILLERY SCOTLAND, UK.

MaxiLED GU10 Retrofit Bespoke DMX RGBW

Project specifications

IP20

Retrofit

RGBW

48V

CE

UKCA

5 Year Warranty

For full product specification see datasheet

Project Information

Client: Ardbeg Distillery

Location: Islay, Scotland - United Kingdom

Products Used: **MaxiLED** GU10 Retrofit Bespoke RGBW DMX

Controller Used: **MaxiLINK** and Pharos

Background

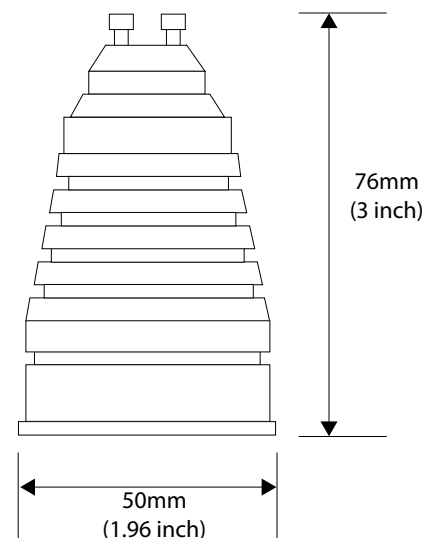
Located on the Hebridean Island of Islay, Ardbeg Distillery has recently celebrated its 200 year anniversary. **MaxiLED** previously supplied our unique 2 core technology lighting for an overhaul of the main entrance to the visitor centre. The same technology was used for retrofit GU10 Fittings, within the visitors centre. The Existing 50Watt Halogen GU10 fittings were replaced with 4.7Watt **MaxiLED** GU10 DMX RGBW fittings.

The primary task for **MaxiLED** Lighting was to replace the Existing 50Watt Halogen lamps for a dynamic controllable fitting.

MaxiLED developed an addressable DMX controllable RGB Amber retrofit fitting using the unique 2 core data over power technology. This retrofit 4.7Watt GU10 fitting not only save 90 percent power but allows the programmer to individually control any colour from RGBA spectrum on each and every individual Lamp.

As this was a retrofit project, no rewire was needed. Saving a huge amount on installation costs.

Installation of our **MaxiLINK** and a power converter at the beginning of the wiring circuit allowed the data to be sent over the existing wiring.



MaxiLED
Lighting



BESPOKES

BLACKBURN HIGHSTREET
ENGLAND, UK.

MaxiPUNCH Retrofit Bespoke Static

Project specifications

IP67

IK07

Static

48V

CE

UKCA

5 Year Warranty

For full product specification see datasheet

Project Information

Client: Blackburn Council

Location: Blackburn, England - United Kingdom

Products Used: **MaxiPUNCH** Retrofit Bespoke Static

Background

MaxiLED has designed a custom lighting solution, the **MaxiPunch** recessed static, which is both functional and aesthetically pleasing for a variety of landscapes. The fixture integrates seamlessly with existing infrastructure, utilising the existing dimensions for an easy retrofit.

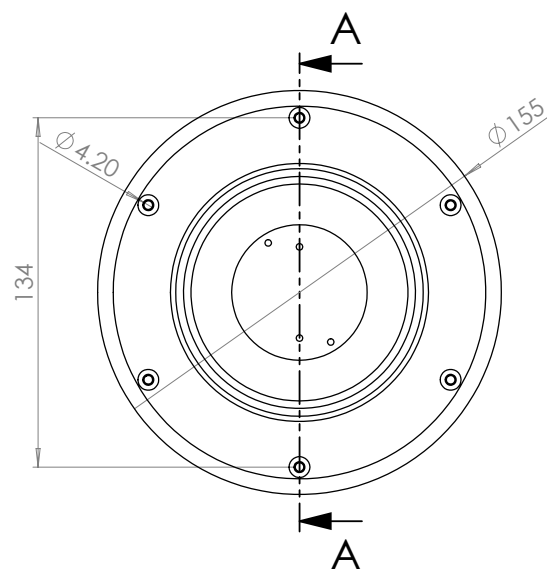
Key features include:

IP67 rating, making it suitable for outdoor and harsh environments. Customisable LED options such as colour temperatures and beam angles, allowing for tailored lighting effects.

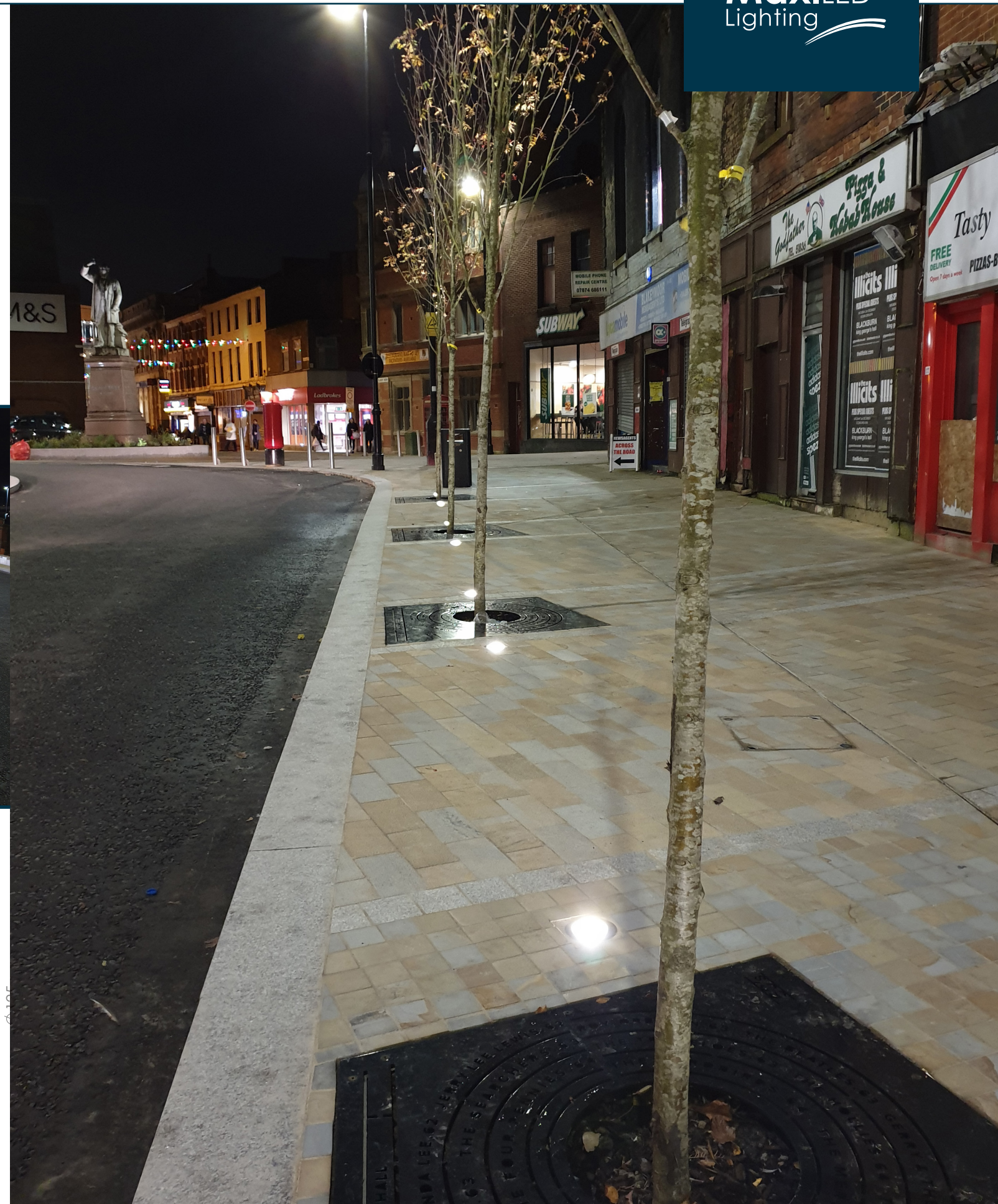
Various housing finishes, giving designers the flexibility to match the fixture with different environments and design preferences.

Elegant and sleek design that complements a wide range of landscapes, ensuring the fixture is both subtle and effective.

This combination of durability, customization, and sleek appearance makes the **MaxiPunch** recessed static a versatile choice for landscape lighting projects.



MaxiLED
Lighting



MaxiCRYSTAL DMX RGBW

IP20

RGBW

48V

CE

UKCA

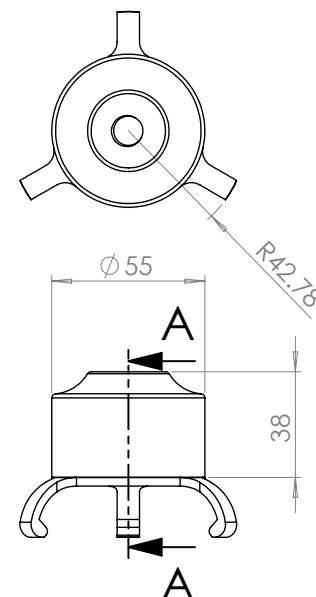
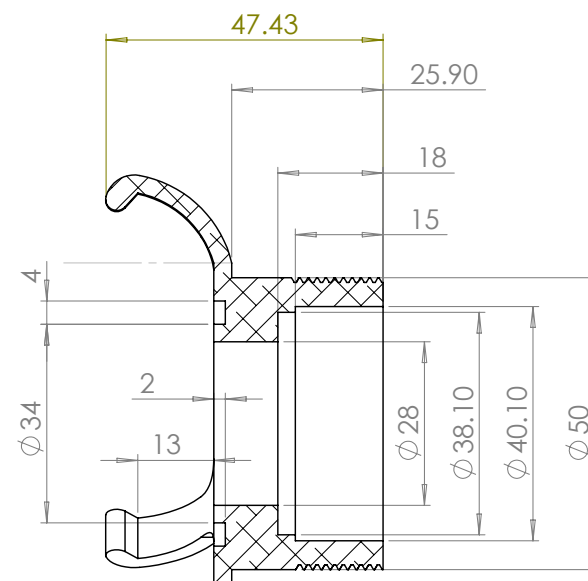
5 Year Warranty

KEY FEATURES

- Clear Glass Crystal Prism
- Luxurious Design
- 512 DMX RGBW Controllable
- Multi chip Cree® LED
- 48VAC Data over Power 2 wire system

Product Overview

Our **MaxiCrystal** provides a luxurious lighting solution for atrium or foyer. Manufactured from quality materials and incorporating our Patented 2 wire data over power technology, giving full DMX 512 control down the 2 power wires makes it the simplest to install and most cost effective product of its type in the market place today.



MaxiLANTERN DMX RGBW

IP68

RGBW

48V

CE

UKCA

5 Year Warranty

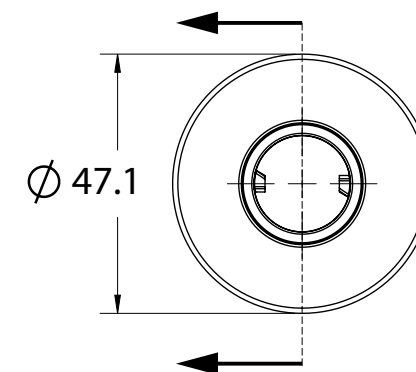
KEY FEATURES

- IP68 (Sealed Lantern)
- Available in 512 DMX Controllable
- Available in High Output
- Available in Static
- Dimmable (0-10V)
- Single strand runs as long as 330 ft (100m)

Product Overview

Maxiled lighting have developed the **MaxiLANTERN** Series into a unique patent pending easy installation system for low power DMX projects over any two wires 1.5 or 2.5sqmm cable. The DMX install is simply the same wiring as a static install.

All drivers and control can be housed 75metres away from the lighting. Simple, clean and unique especially for any installer that is not experienced in DMX installs.



Focal Facade Mounting plate

KEY FEATURES

- Building Corner Mount
- Available in any RAL Colour
- Various mounting angles available

Product Overview

This Focal facade accessory allows the fixture to be mounted to the corner of structures. This accessory can be used to continue the run of Focal Facades across multiple sides of the building.



MaxiLED Large globe Light Shield

IP68

IK07

RGBW Static

48V 24V

CE

UKCA

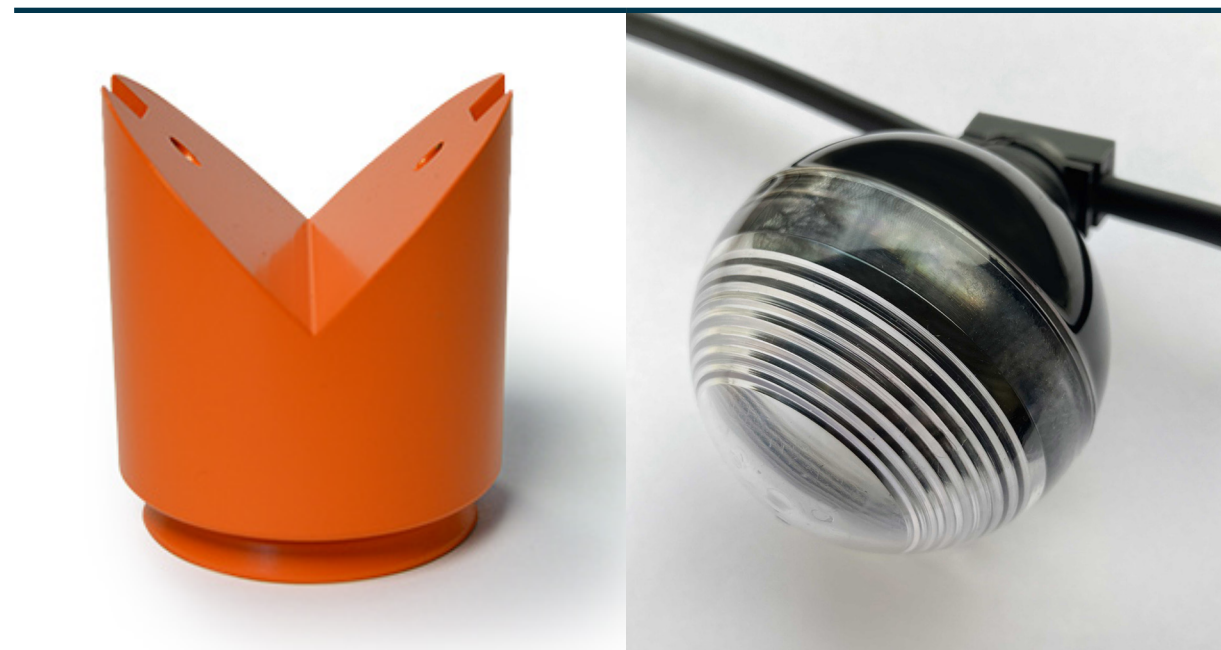
5 Year Warranty

KEY FEATURES

- IP68 (Sealed Globe)
- Available in 512 DMX Controllable
- Available in High Output
- Available in Static
- Single strand runs as long as 330 ft (100m)

Product Overview

To prevent excessive light spill and reduce light pollution in some environmentally sensitive areas during the night. We design and manufacture external light shields to stop the back spill of light in environmentally sensitive areas.



MaxiDUO 102
DMX RGBW

- IP67
- RGBW
- 48V
- CE
- UKCA
- 5 Year Warranty

KEY FEATURES

- DMX RGBW Controllable
- Data over Power - 2 Core cable
- Duo lighting design
- Dimmable
- Multi chip Cree® LED
- 48VAC Data over Power

Product Overview

MaxiLED Duo 102 bridging existing wiring with new DMX RGBW Technology. RGBW Multi-chip LED with emits an up and down beam of light. DMX Fully controllable fixture bringing saturated and dynamic effects to the aluminum anodised housing. Data is sent over power, using our patent pending technology. Easily controlled by a range of DMX 512 controllers.

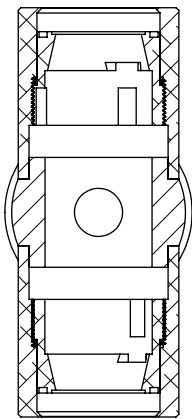
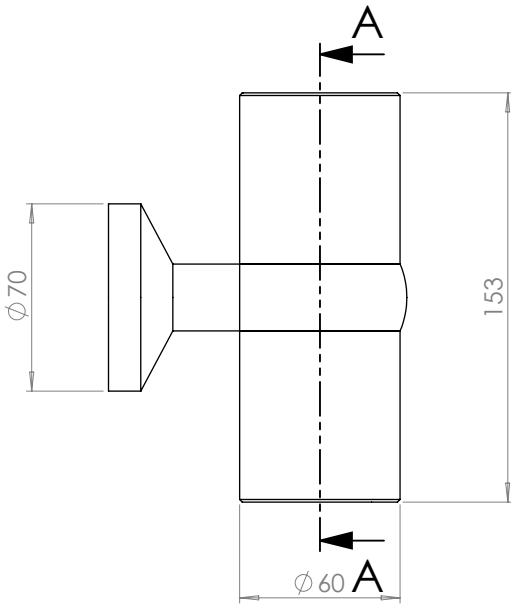
Specifications	400mAh
Power:	9.4W
Current:	400mAh
Max Units per System:	25 units
Lumens	
RGBW (Full on):	190 Lumens
Intelligent white (Full on):	300 Lumens
Lumen Maintenance 85%:	90,000 Hrs



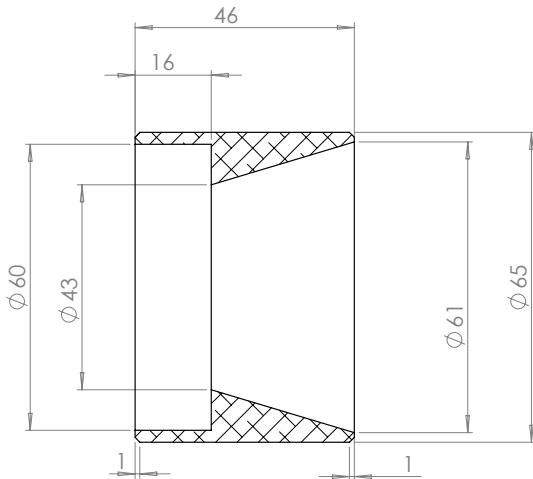
MaxiPUNCH Cowl
Glare shield

KEY FEATURES

- Cowl head MaxiLED Punch 102 Compatible
- Reduced glare
- Full glare shield or Half glare shield options
- Louver option
- Elegant Unit Design



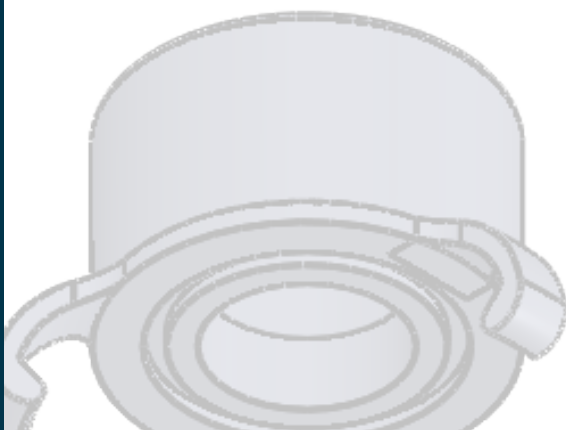
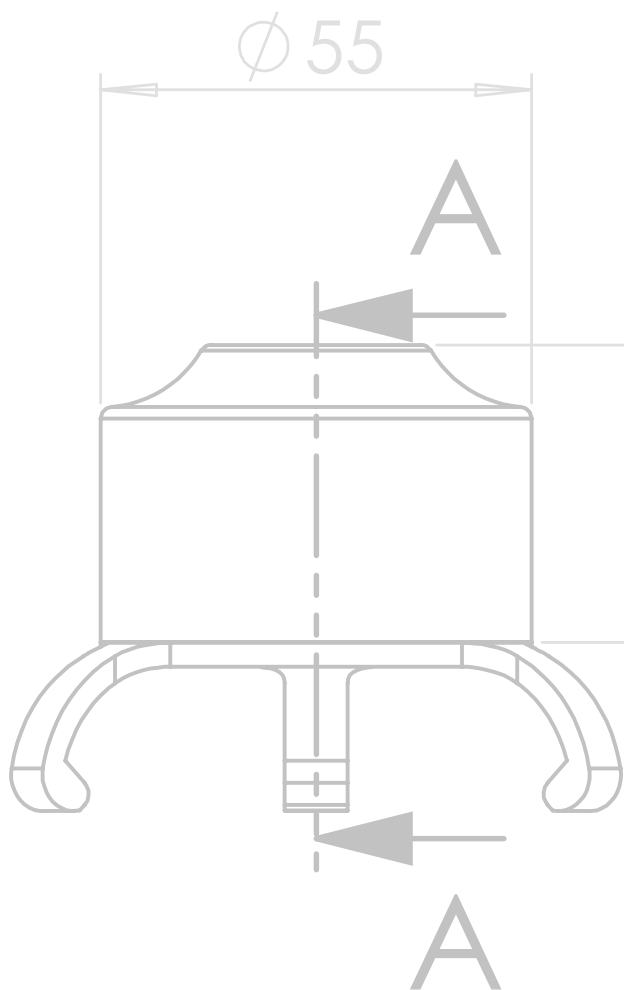
SECTION A-A
SCALE 1 : 2



SECTION A-A
SCALE 1 : 1

DATASHEETS

MaxiLED
Lighting



MaxiDEPTH



MaxiPUNCH



MaxiLED Large Globe



MaxiLED Small Globe



MaxiPENDANT



MaxiEDGE



MaxiDOT 180°



MaxiDOT

MaxiDEPTH Series

102/302 DMX controllable



KEY FEATURES

- IP68 (Depth 1 Meter temporary)
- IK10 (Optional)
- 48VAC Data over Power 2 wire system
- 512 DMX RGBW Controllable
- 150/250mm Recessed sleeve available
- 15°/25°/40°/170° (no optic)
- MaxiSEAL (Optional)

Product Overview

Our IP68 **MaxiDEPTH** fitting is available in 2 different sizes delivering different light outputs, available in clear lens this makes the **MaxiDEPTH** series a perfect recessed lighting solution. Manufactured from quality materials with an optional MaxiSEAL finish and incorporating our Patented 2 wire data over power technology giving full DMX 512 control down the 2 power wires making it the simplest to install and most cost effective product of its type in the market place today. **MaxiDEPTH** has a Drive-Over rating of 5000kg (Optional), IK10 glass lens and an IP68 factory-sealed optical chamber.



MaxiDEPTH 102
Recessed



MaxiDEPTH 302
Recessed

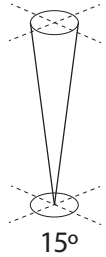
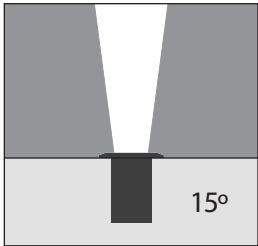


UK Designed and
Manufactured

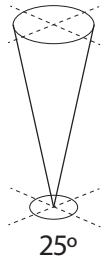
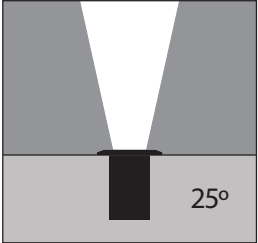
Specifications	102	302
Dimming		
DMX512 Dimmable (Data Over power):	YES	YES
DMX 512 refresh rate:	44Hz	44Hz
LED Options		
(Cree XQE Led's) RGBW:	YES	YES
(Cree XQE Led's) RGBWW:	YES	YES
Intelligent white 2700k-6000K:	YES	YES
Beam Angles		
15/25/40/170 (no optic)	YES	YES
Electrical specification		
Power input:	48VAC Data Over Power MaxiLINK system	
LED Current:	200ma	200ma
Watts per unit:	4.8w	14.4w
Max. Units per system (1.5mm sq cable):	50 Units	16 Units
Max distance from 1st to last unit (1.5mm sq cable):	100m (328 ft)	100m (328 ft)
Lumens RGBW Clear Glass:	150	450
Lumens Intelligent white:	250	750
Lumen Maintenance 85%:	90,000Hrs	90,000Hrs
System Cable Distances		
Max. cable 1.5mm sq from MaxiLINK to 1st fitting:	15m (49 ft)	15m (49 ft)
Max. cable 2.5mm sq from MaxiLINK to 1st fitting:	75m (246 ft)	75m (246 ft)
Protection		
IP68 (Depth 1 Meter temporary):	YES	YES
Impact Protection (Standard):	Pedestrian Traffic	Pedestrian Traffic
Drive over 5000Kg (Optional):	IK10	No
Thermal Protection cut out at 70C:	YES	YES
Operation Temperature:	-25 to +50	-25 to +50
Finishes Options		
MaxiSEAL Black:	YES	YES
MaxiSEAL Silver:	YES	YES
Black / Silver Anodised:	YES	YES
RAL Powder Coat:	YES	YES
Fitting Options		
Recessed Sleeve depth:	150/250mm	150mm
Listings:		
UL LISTED, CE, UKCA		
Dimensions & Weights		
Diameter (mm):	60	125
Depth (mm):	85	85
Weight KG:	0.4KG	1KG

Beam Angles

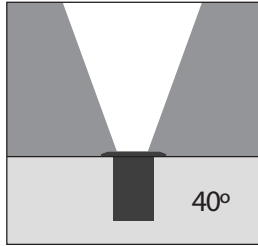
15° Narrow Beam



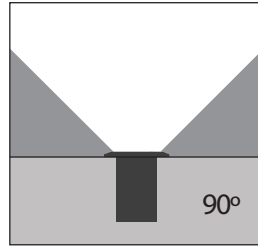
25° Narrow Beam



40° Wide Beam

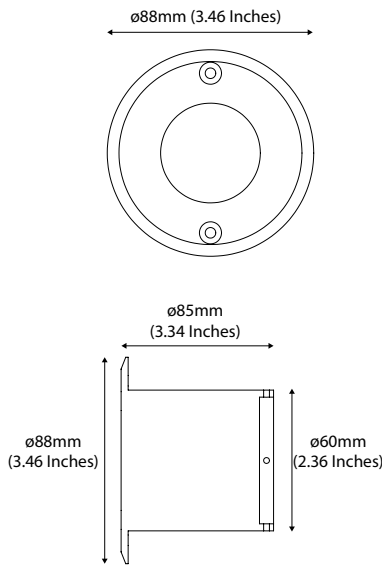


90° Flood

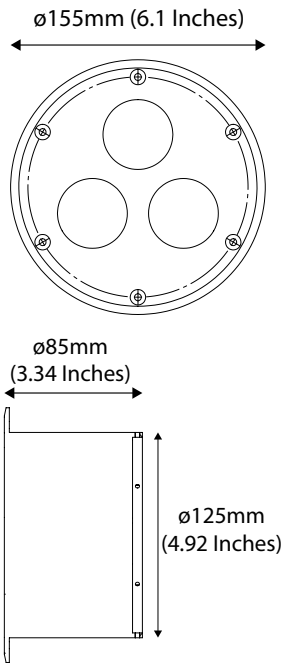


Dimensions

MaxiDEPTH 102 Series Fixture Dimensions



MaxiDEPTH 302 Series Fixture Dimensions

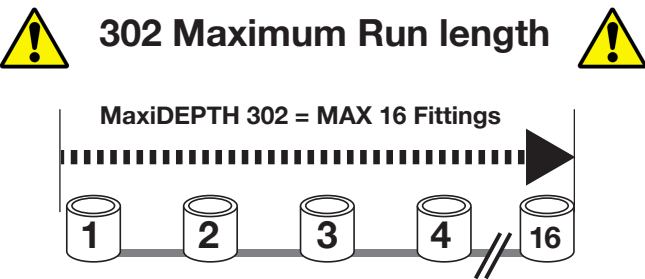
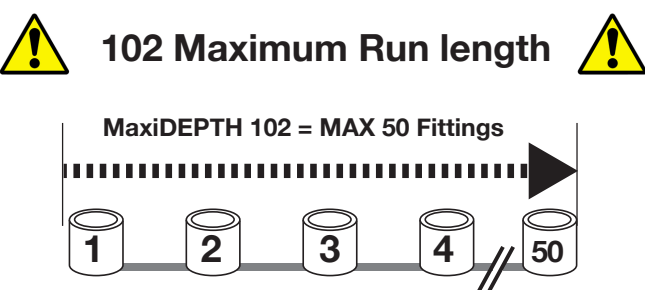
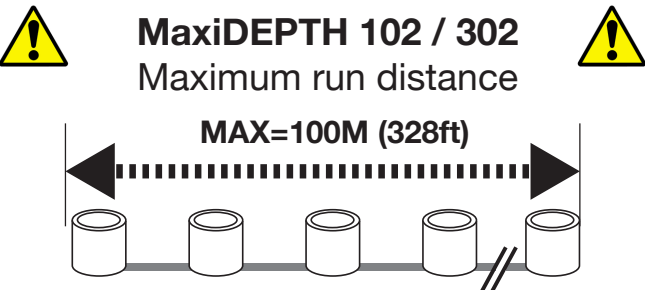
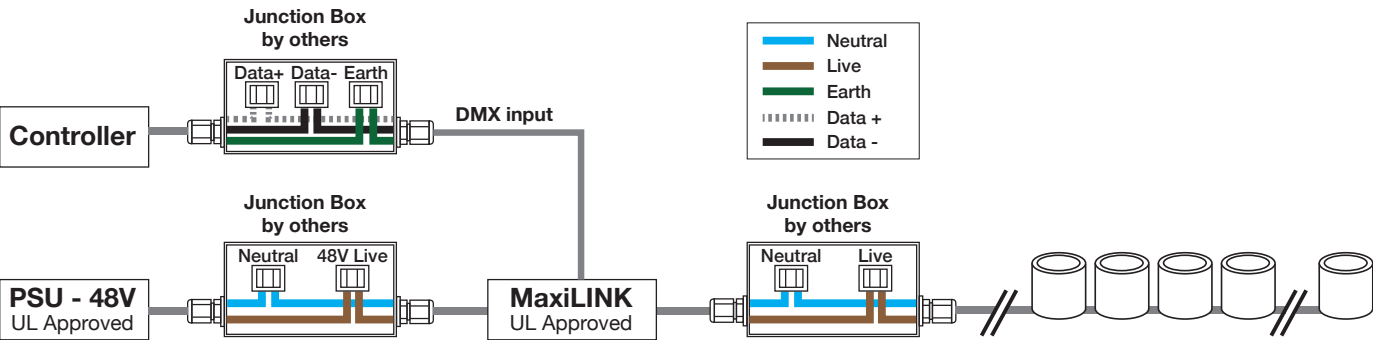


MaxiDEPTH Series

102/302 DMX controllable

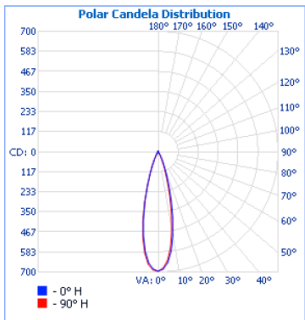
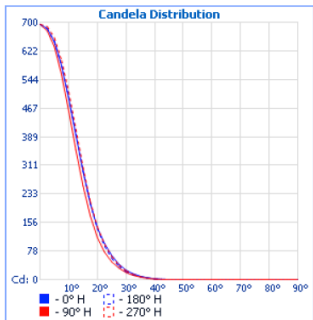


Run Lengths



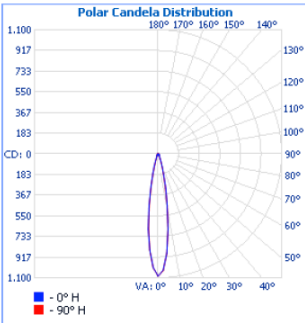
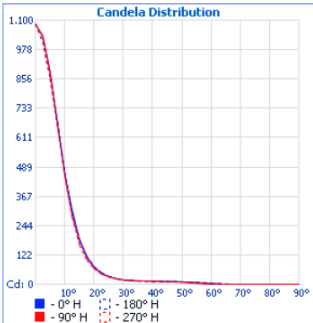
MaxiDEPTH 102 Photometrics

RGBW 40° - Test performed on a single MaxiDEPTH 102 with clear lens and full RGBW on



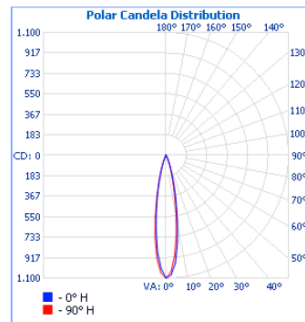
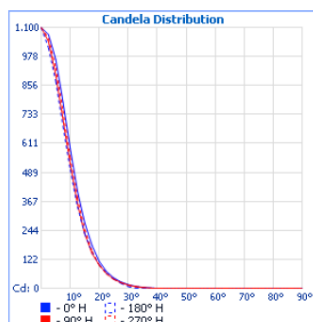
Illuminance at a Distance		
Center Beam LUX	Beam Width	
1.0M	694.7 LUX	0.5 M 0.5 M
2.0M	173.7 LUX	1.0 M 0.9 M
3.0M	77.2 LUX	1.5 M 1.4 M
4.0M	43.4 LUX	1.9 M 1.9 M
5.0M	27.8 LUX	2.4 M 2.4 M
6.0M	19.3 LUX	2.9 M 2.8 M
<div> <div>■</div> Vert. Spread: 27.4° <div>■</div> Horiz. Spread: 26.6° </div>		

RGBW 25° - Test performed on a single MaxiDEPTH 102 with clear lens and full RGBW on



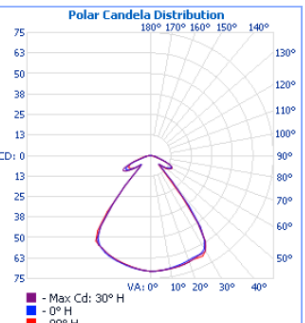
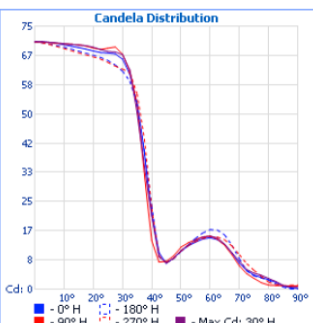
Illuminance at a Distance		
Center Beam LUX	Beam Width	
1.0M	1,084.6 LUX	0.3 M 0.3 M
2.0M	271.2 LUX	0.6 M 0.6 M
3.0M	120.5 LUX	1.0 M 0.9 M
4.0M	67.8 LUX	1.3 M 1.3 M
5.0M	43.4 LUX	1.6 M 1.6 M
6.0M	30.1 LUX	1.9 M 1.9 M
<div> <div>■</div> Vert. Spread: 18.1° <div>■</div> Horiz. Spread: 17.9° </div>		

RGBW 15° - Test performed on a single MaxiDEPTH 102 with clear lens and full RGBW on



Illuminance at a Distance		
Center Beam LUX	Beam Width	
1.0M	1,099.7 LUX	0.4 M 0.3 M
2.0M	274.9 LUX	0.7 M 0.7 M
3.0M	122.2 LUX	1.1 M 1.0 M
4.0M	68.7 LUX	1.4 M 1.4 M
5.0M	44.0 LUX	1.8 M 1.7 M
6.0M	30.5 LUX	2.1 M 2.1 M
<div> <div>■</div> Vert. Spread: 19.9° <div>■</div> Horiz. Spread: 19.7° </div>		

RGBW No optics - Test performed on a single MaxiDEPTH 102 with clear lens and full RGBW on



Illuminance at a Distance		
Center Beam LUX	Beam Width	
1.0M	70.51 LUX	1.6 M 1.5 M
2.0M	17.63 LUX	3.1 M 3.1 M
3.0M	7.83 LUX	4.7 M 4.6 M
4.0M	4.41 LUX	6.3 M 6.2 M
5.0M	2.82 LUX	7.8 M 7.7 M
6.0M	1.96 LUX	9.4 M 9.3 M
<div> <div>■</div> Vert. Spread: 76.1° <div>■</div> Horiz. Spread: 75.5° </div>		

MaxiPUNCH Series

102/302 DMX controllable



KEY FEATURES

- 512 DMX RGBW Controllable
- IP68 (Depth 1 Meter)
- Multi chip Cree® LED
- 48VAC Data over Power 2 wire system
- Optics available 15°, 25°, 40°, 90° (no optic)

Product Overview

Our Facade **MaxiPUNCH** fitting is available in 2 different sizes delivering different light outputs, available in clear lens makes the **MaxiPUNCH** family of fittings a perfect solution for most facade applications. Manufactured from quality materials and incorporating our Patented 2 wire data over power technology giving full DMX 512 control down the 2 power wires makes it the simplest to install and most cost effective product of its type in the market place today.



MaxiPUNCH 102



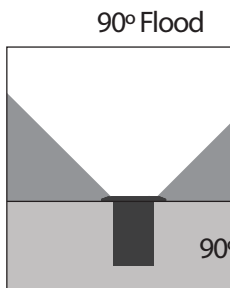
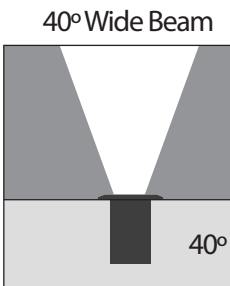
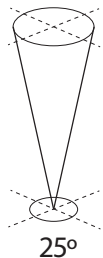
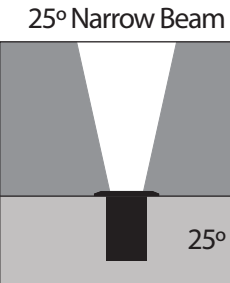
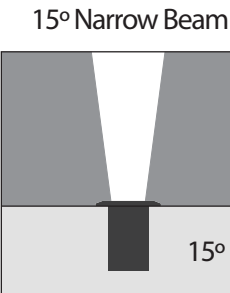
MaxiPUNCH 302



UK Designed and
Manufactured

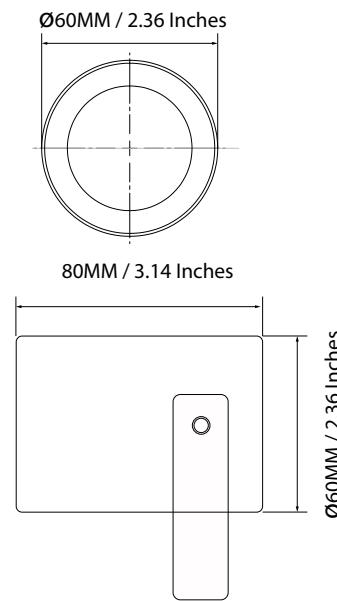
Specifications	102	302
Dimming		
DMX512 Dimmable		
(Data Over power):	YES	YES
DMX 512 refresh rate:	44hz	44hz
LED Options		
(Cree XQE Led's)		
RGBW:	YES	YES
Intelligent white 2700k-6000K:	YES	YES
Beam Angles		
15/25/40/90 (no optic)	YES	YES
Toughened Clear Glass Lens:	YES	YES
Electrical specification		
Power input:	48VAC Data Over Power MaxiLINK system	
LED Current:	200ma	200ma
Watts per unit:	4.8w	14.4w
Max. Units per system		
14 AWG (1.5mm sq) cable:	50	16
Max distance from 1st to last unit 14 AWG(1.5mm sq) cable:	100m	100m
Lumens RGBW		
Clear Glass (Full On):	150	450
Red lumen (lm):	25	76
Green lumen (lm):	61	61
Blue lumen (lm):	9	27
White lumen (lm):	57	171
Lumens Intelligent white (Full On):	250	750
Lumen Maintenance 85%:	90,000Hrs	90,000Hrs
System Cable Distances		
Max. 14 AWG (1.5mm sq) cable from MaxiLINK to 1st fitting:	15m	15m
Max.10 AWG (2.5mm sq) cable from MaxiLINK to 1st fitting:	75m	75m
Protection		
IP68 (Depth 1 Meter)	YES	YES
Thermal Protection cut out at 70°C:	YES	YES
Operation Temperature:	-25 to +50	-25 to +50
Finishes		
MaxiSEAL Black:	YES	YES
MaxiSEAL Silver:	YES	YES
Black Anodised:	YES	YES
Silver Anodised:	YES	YES
RAL Powder Coat:	YES	YES
Fitting Options		
Adjustable wall bracket:	YES	YES
Adjustable spike:	YES	YES
Listings:		
	CE	
Dimensions & Weights		
Diameter (mm):	60	125
Depth (mm):	85	85
Weight KG:	0.4KG	1KG

Beam Angles

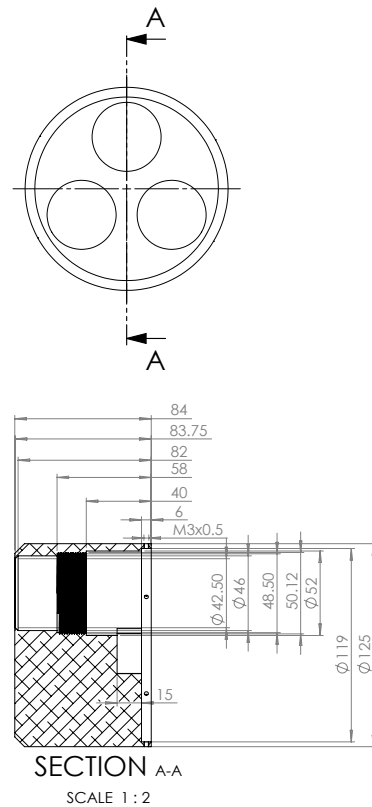


Dimensions

MaxiPUNCH 102 Series Fixture Dimensions



MaxiPUNCH 302 Series Fixture Dimensions

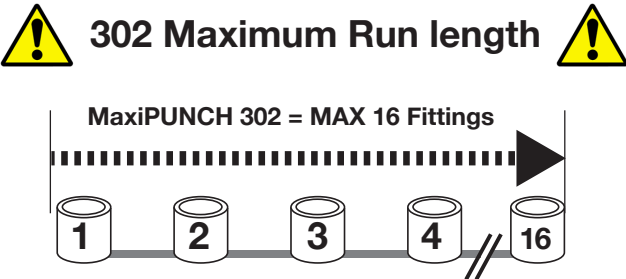
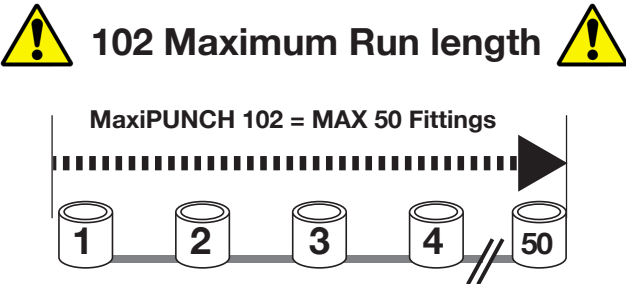
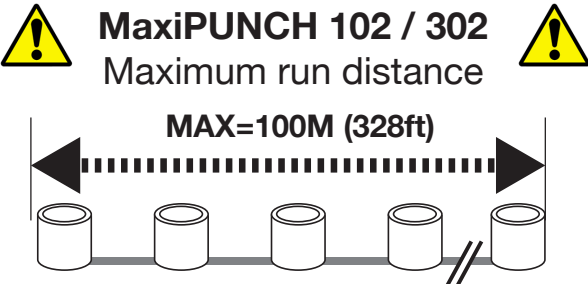
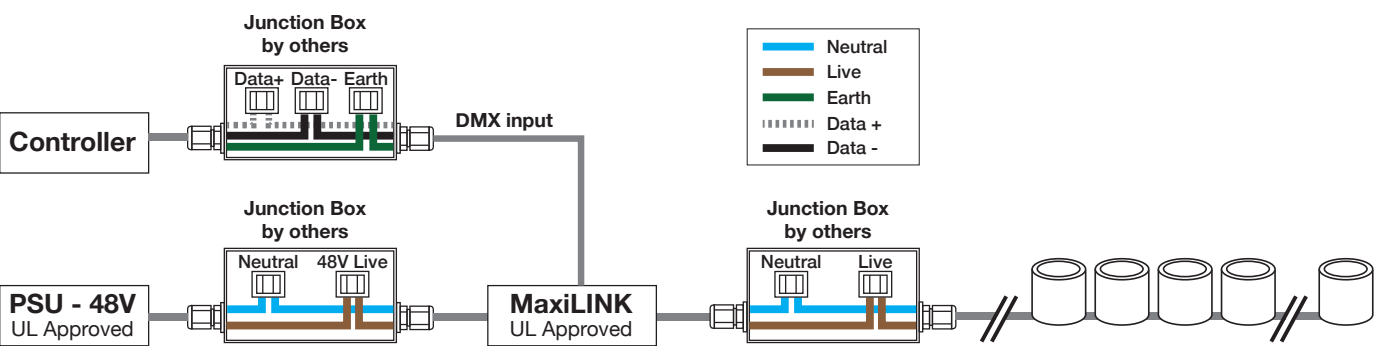


MaxiPUNCH Series

102/302 DMX controllable

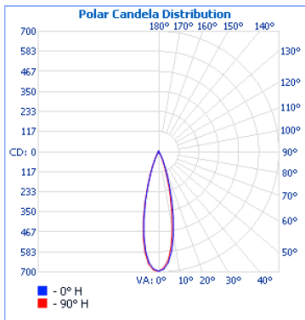
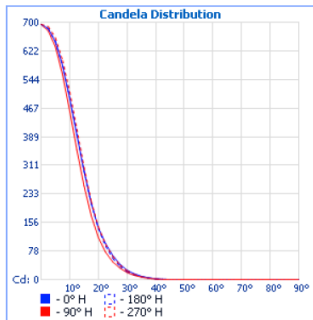


Run Lengths



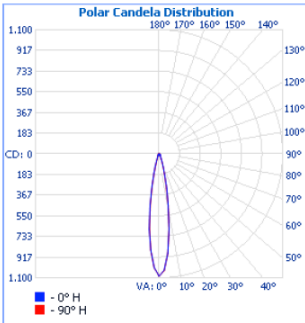
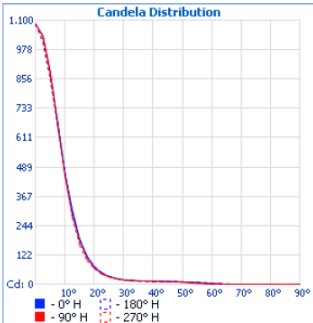
MaxiPUNCH 102 Photometrics

RGBW 40° - Test performed on a single MaxiPUNCH 102 with clear lens and full RGBW on



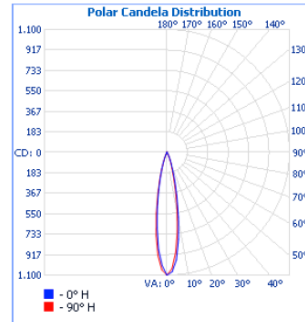
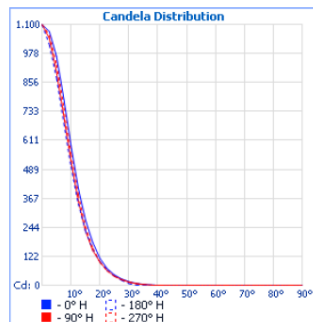
Illuminance at a Distance		
Center Beam LUX	Beam Width	
1.0M	694.7 LUX	0.5 M 0.5 M
2.0M	173.7 LUX	1.0 M 0.9 M
3.0M	77.2 LUX	1.5 M 1.4 M
4.0M	43.4 LUX	1.9 M 1.9 M
5.0M	27.8 LUX	2.4 M 2.4 M
6.0M	19.3 LUX	2.9 M 2.8 M
<div> <div>■ Vert. Spread: 27.4°</div> <div>■ Horiz. Spread: 26.6°</div> </div>		

RGBW 25° - Test performed on a single MaxiPUNCH 102 with clear lens and full RGBW on



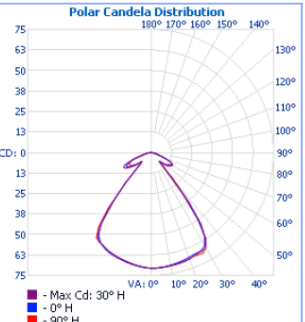
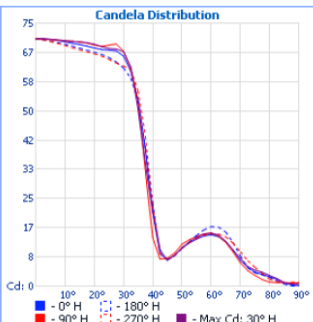
Illuminance at a Distance		
Center Beam LUX	Beam Width	
1.0M	1,084.6 LUX	0.3 M 0.3 M
2.0M	271.2 LUX	0.6 M 0.6 M
3.0M	120.5 LUX	1.0 M 0.9 M
4.0M	67.8 LUX	1.3 M 1.3 M
5.0M	43.4 LUX	1.6 M 1.6 M
6.0M	30.1 LUX	1.9 M 1.9 M
<div> <div>■ Vert. Spread: 18.1°</div> <div>■ Horiz. Spread: 17.9°</div> </div>		

RGBW 15° - Test performed on a single MaxiPUNCH 102 with clear lens and full RGBW on



Illuminance at a Distance		
Center Beam LUX	Beam Width	
1.0M	1,099.7 LUX	0.4 M 0.3 M
2.0M	274.9 LUX	0.7 M 0.7 M
3.0M	122.2 LUX	1.1 M 1.0 M
4.0M	68.7 LUX	1.4 M 1.4 M
5.0M	44.0 LUX	1.8 M 1.7 M
6.0M	30.5 LUX	2.1 M 2.1 M
<div> <div>■ Vert. Spread: 19.9°</div> <div>■ Horiz. Spread: 19.7°</div> </div>		

RGBW No optics - Test performed on a single MaxiPUNCH 102 with clear lens and full RGBW on



Illuminance at a Distance		
Center Beam LUX	Beam Width	
1.0M	70.51 LUX	1.6 M 1.5 M
2.0M	17.63 LUX	3.1 M 3.1 M
3.0M	7.83 LUX	4.7 M 4.6 M
4.0M	4.41 LUX	6.3 M 6.2 M
5.0M	2.82 LUX	7.8 M 7.7 M
6.0M	1.96 LUX	9.4 M 9.3 M
<div> <div>■ Vert. Spread: 76.1°</div> <div>■ Horiz. Spread: 75.5°</div> </div>		

MaxiDOT Direct view

102 DMX controllable



KEY FEATURES

- 512 DMX RGBW Controllable
- IP68 (Depth 1 Meter)
- Available in intelligent White
- 48VAC Data over Power 2 wire system
- Single strand runs as long as 330 ft (100m)

Product Overview

Our Facade **MaxiDOT** fitting is designed for marker light applications, specifically in low-resolution screen and matrix systems. The Facade **MaxiDOT** fitting stands out due to its integration of Patented 2-wire data over power technology, which enables full DMX 512 control while minimising the need for additional wiring. This simplifies the installation process and reduces costs, making it highly competitive in the market.

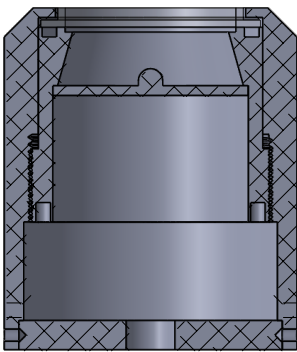
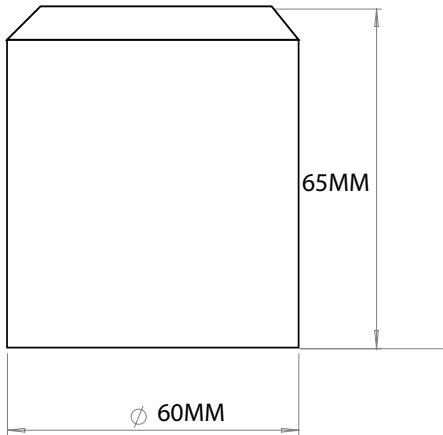


MaxiDOT 102 Direct view

Specifications	102 Direct View
Dimming	
DMX512 Dimmable	
(Data Over power):	YES
DMX 512 refresh rate:	44Hz
LED Options	
(Cree XQE Led's) RGBW:	YES
(Cree XQE Led's) RGBWW:	YES
Intelligent white 2700k-6000K:	YES
Lens	
Frosted direct viewing	YES
Electrical specification	
Power input:	48VAC Data Over Power MaxiLINK system
LED Current:	200ma
Watts per unit:	4.8w
Max. Units per system (1.5mm sq cable):	50 Units
Max distance from 1st to last unit (1.5mm sq cable):	100m (328 ft)
Lumens RGBW Frosted Glass:	150
Lumens Intelligent white:	250
Lumen Maintenance 85%:	90,000Hrs
System Cable Distances	
Max. cable 1.5mm sq from MaxiLINK to 1st fitting:	15m (49 ft)
Max. cable 2.5mm sq from MaxiLINK to 1st fitting:	75m (246 ft)
Protection	
IP68 (Depth 1 Meter temporary)	YES
Thermal Protection cut out at 70C:	YES
Operation Temperature:	-25 to +50
Finishes Options	
MaxiSEAL Black:	YES
MaxiSEAL Silver:	YES
Black / Silver Anodised:	YES
RAL Powder Coat:	YES
Listings:	UL LISTED, CE, UKCA
Dimensions & Weights	
Diameter (mm):	60
Depth (mm):	65
Weight KG:	0.4KG

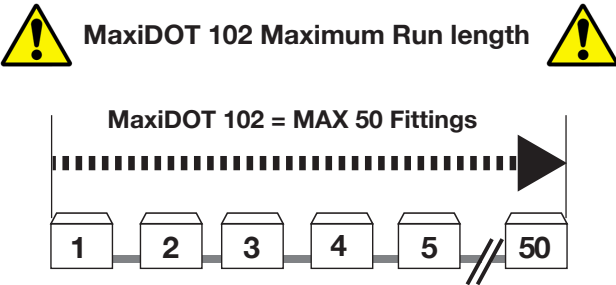
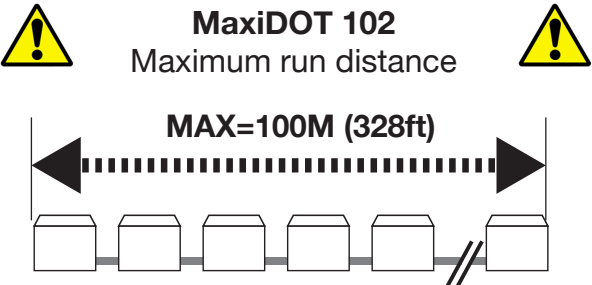
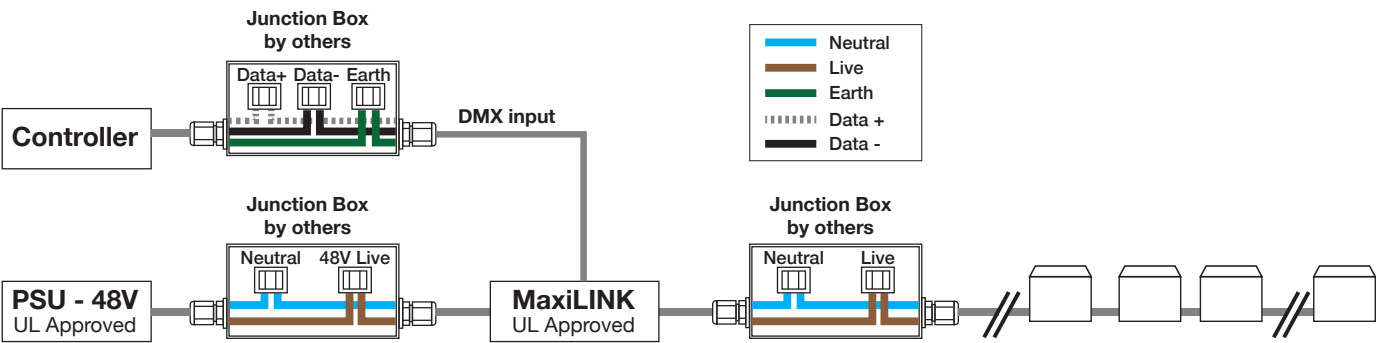
Dimensions

MaxiDOT 102 Direct view



SECTION A-A

Run Lengths



MaxiDOT 180° Series

102/302 DMX controllable



KEY FEATURES

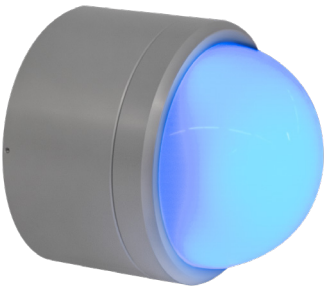
- 512 DMX RGBW Controllable
- IP68 (Depth 1 Meter)
- Available in intelligent White
- 48VAC Data over Power 2 wire system
- Single strand runs as long as 330 ft (100m)
- The MaxiDOT 180° is available in 2 models

Product Overview

Our Facade **MaxiDOT** fitting is available in 2 variations, 102 and 302 both with 180° viewing. Both fittings are a perfect solution for most building facades. Delivering 180° viewing not only for marker light applications but for low resolution screen and matrix systems. Manufactured from quality materials and incorporating our Patented 2 wire data over power technology giving full DMX 512 control down the 2 power wires makes it the simplest to install and most cost effective product of its type in the market place today.



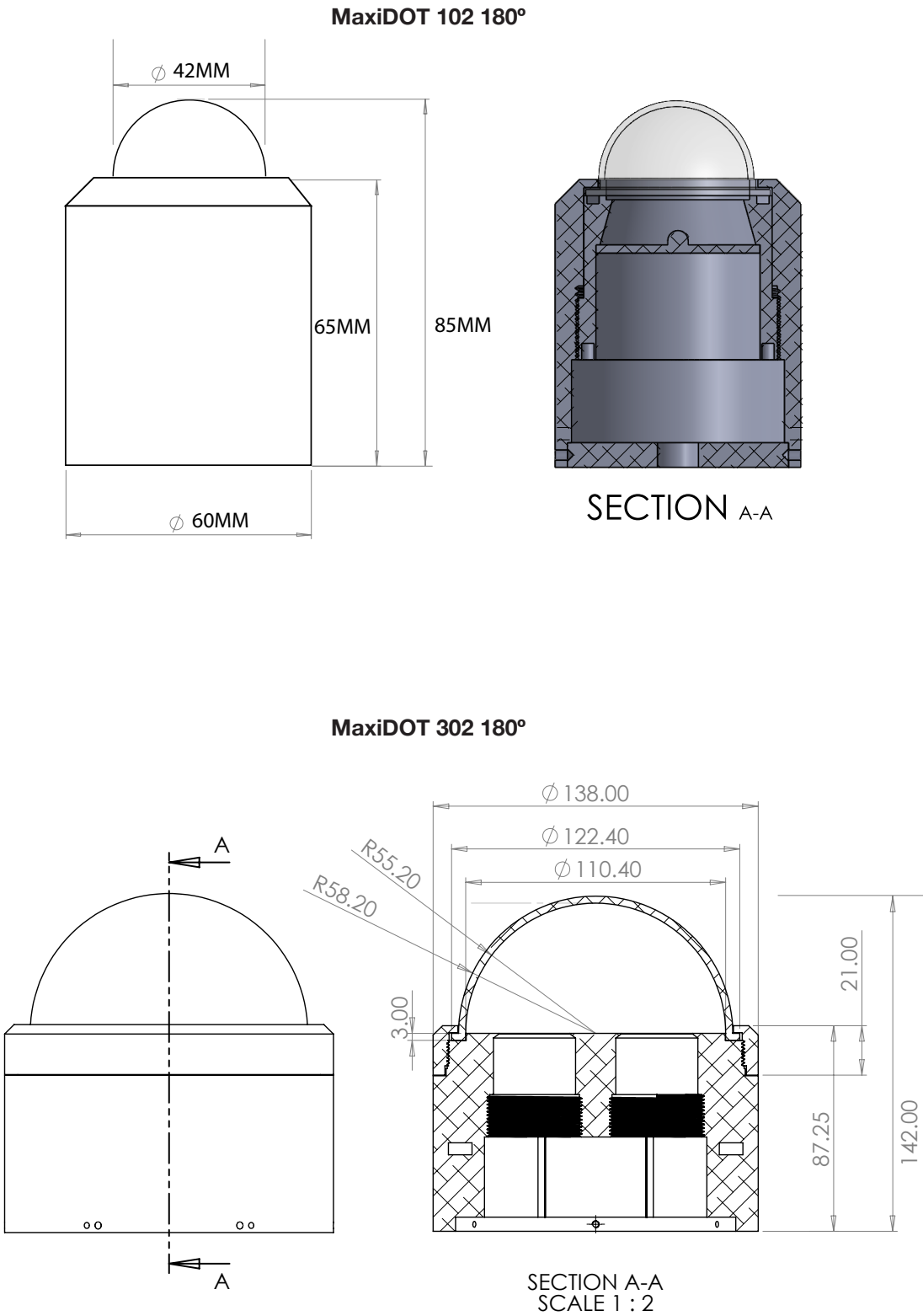
MaxiDOT 102 180°



MaxiDOT 302 180°

Specifications	102 180°	302 180°
Dimming		
DMX512 Dimmable (Data Over power):	YES	YES
DMX 512 refresh rate:	44Hz	44Hz
LED Options		
(Cree XQE Led's) RGBW:	YES	YES
(Cree XQE Led's) RGBWW:	YES	YES
Intelligent white 2700k-6000K:	YES	YES
Lens		
Acrylic frosted dome, 180° viewing	YES	YES
Electrical specification		
Power input:	48VAC Data Over Power MaxiLINK system	
LED Current:	200ma	200ma
Watts per unit:	4.8w	14.4w
Max. Units per system (1.5mm sq cable):	50 Units	16 Units
Max distance from 1st to last unit (1.5mm sq cable):	100m (328 ft)	100m (328 ft)
Lumen Maintenance 85%:	90,000Hrs	90,000Hrs
System Cable Distances		
Max. cable 1.5mm sq from MaxiLINK to 1st fitting:	15m (49 ft)	15m (49 ft)
Max. cable 2.5mm sq from MaxiLINK to 1st fitting:	75m (246 ft)	75m (246 ft)
Protection		
IP68 (Depth 1 Meter temporary)	YES	YES
Thermal Protection cut out at 70C:	YES	YES
Operation Temperature:	-25 to +50	-25 to +50
Finishes Options		
MaxiSEAL Black:	YES	YES
MaxiSEAL Silver:	YES	YES
Black / Silver Anodised:	YES	YES
RAL Powder Coat:	YES	YES
Listings:	UL LISTED, CE, UKCA	
Dimensions & Weights		
Diameter (mm):	60	138
Depth (mm):	65	142
Weight KG:	0.4KG	1.0KG

Dimensions



MaxiEDGE

DMX controllable



KEY FEATURES

- IP66
- 48VAC Data over Power 2 wire system
- DMX Controllable
- Recessed or surface mount options
- Easy installation

Product Overview

Our IP66 **MaxiEDGE** DMX controllable fitting is perfect for window edge and corridor lighting. With a 170 degree viewing the **MaxiEDGE** casts a sharp, precise beam of light around the surface area of window/door reveals or corridors.

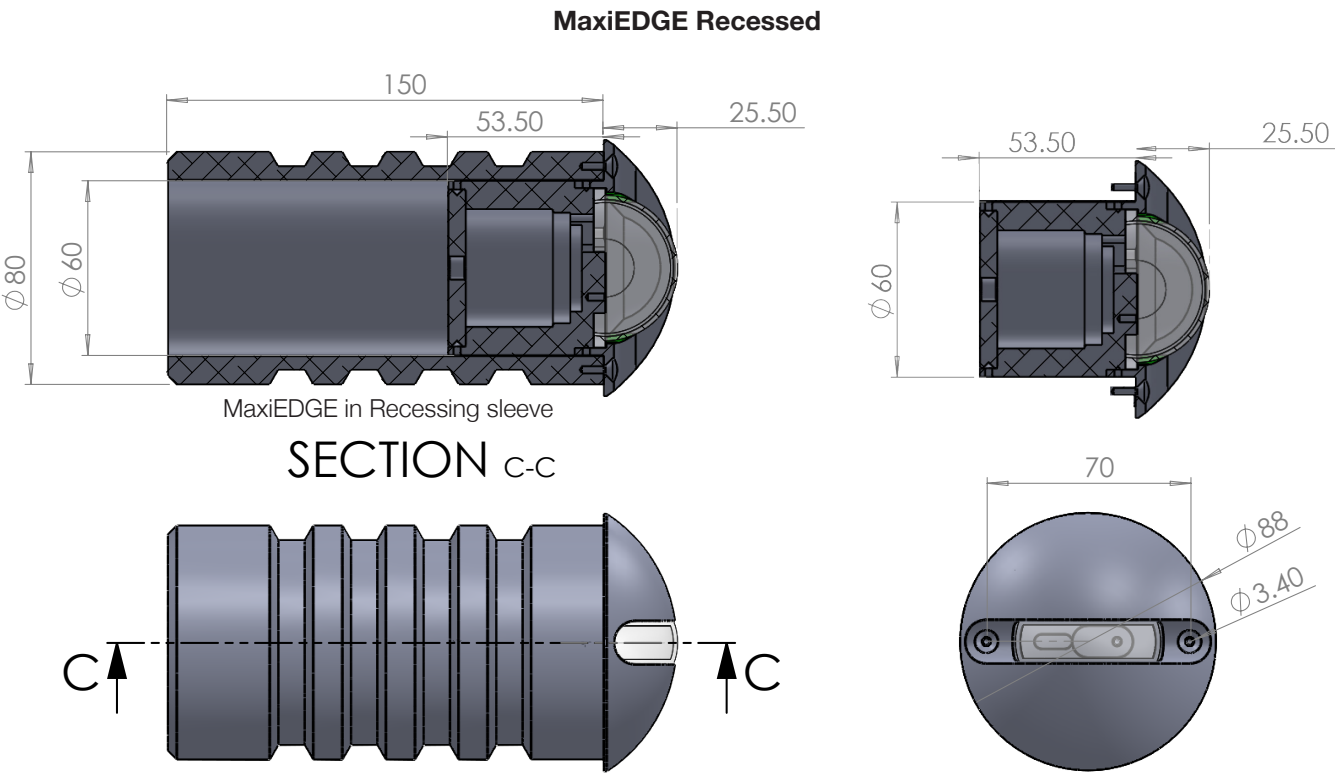
Manufactured from quality materials and incorporating our Patented 2 wire data over power technology giving full DMX control down the 2 power wires makes it the simplest to install and most cost effective product of its type in the market place today.



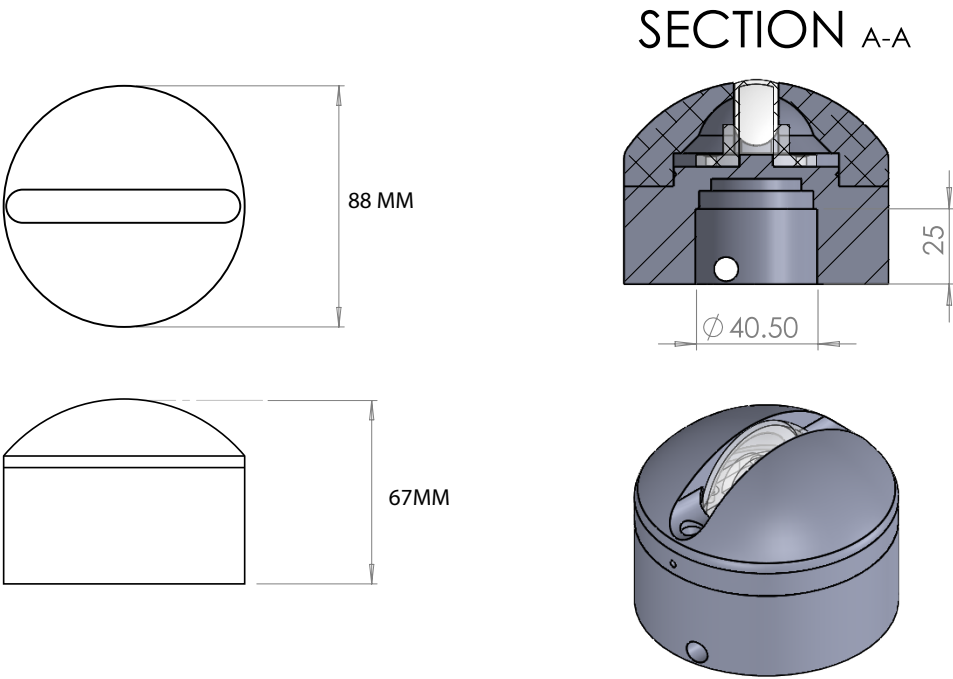
MaxiEDGE surface mount

Specifications	MaxiEDGE
Dimming DMX Dimmable (Data Over power):	YES
LED Options (Cree XQE Led's) Static colours:	2700K, 3500K and 6000K Amber, Blue, Green, Pink, Red.
Beam Angles 170° x 5°	YES
Electrical specification Power input: LED Current: Watts per unit: Max. Units per system 16 AWG (1.5mm sq) cable: Max distance from 1st to last unit 16 AWG(1.5mm sq) cable: Lumens Static colours Clear Glass (Full On): Lumens Static white (Full On): Lumen Maintenance 85%:	48VAC Data Over Power MaxiLINK system 200ma 4.8w 50 100m 150 Est. 250 Est. 90,000Hrs
System Cable Distances Max. 16 AWG (1.5mm sq) cable from MaxiLINK to 1st fitting: Max.14 AWG (2.5mm sq) cable from MaxiLINK to 1st fitting:	15m 75m
Protection IP Rating: Thermal Protection cut out at 70°C: Operation Temperature:	IP66 YES -25 to +50
Finishes Black Anodised: Silver Anodised: RAL Powder Coat:	YES YES YES
Listings:	CE
Dimensions & Weights Diameter (mm): Depth (mm): Weight KG:	88 67 0.45KG

Dimensions



MaxiEDGE Surface mounted



MaxiPENDANT

DMX RGBW

KEY FEATURES

- DMX RGBW
- IP20
- Multi chip Cree® LED
- 48VAC
- Track system compatible

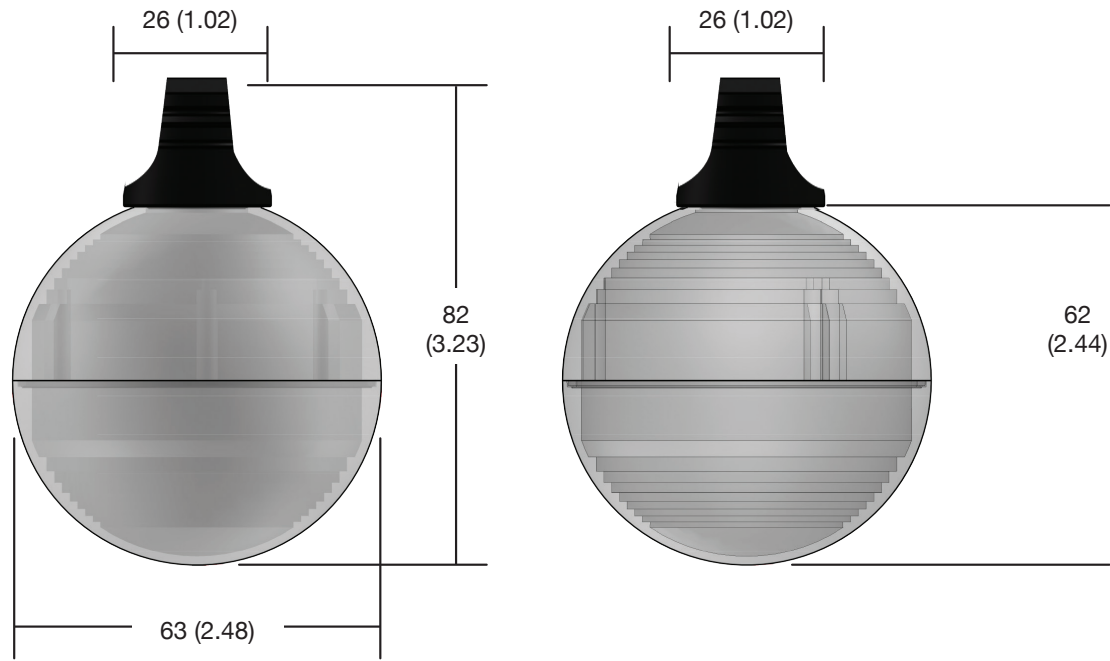
Product Overview

MaxiLED lighting have developed the MaxiPENDANT 64mm range into a unique patent pending easy installation system for low power DMX projects over any two wires 1.5 or 2.5sqmm cable. The DMX install is simply the same wiring as a static install. The MaxiPENDANT 64mm can be used on 3 phase track and adaptors with 1 phase removed, the DMX is run on the back of the power through the track and tells each individual light point what to do. All drivers and control can be housed 75metres away from the lighting. Simple, clean and unique especially for any installer that is not experienced in DMX installs.

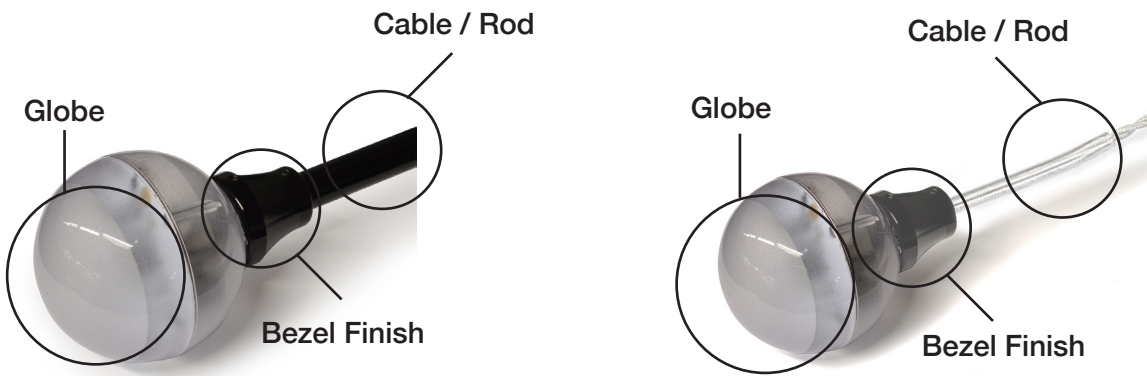


Specifications	MaxiPENDANT 64mm DMX RGBW
Dimming DMX512 Dimmable (Data Over power): DMX 512 refresh rate:	YES 44Hz
LED Options (Cree XQE Led's) RGBW:	YES
Electrical specification Power input: LED Current: Watts per unit: Max. Units per system (1.5mm sq cable): Max distance from 1st to last unit (1.5mm sq cable): Lumens RGBW (Frosted) Lumens RGBW (Clear) Lumen Maintenance 85%:	48VAC Data Over Power MaxiLINK system 100ma 2.4w 100 Units 100m (328 ft) 25 Lumens 80 Lumens 70,000Hrs
System Cable Distances Max. cable 1.5mm sq from MaxiLINK to 1st fitting: Max. cable 2.5mm sq from MaxiLINK to 1st fitting:	15m (49 ft) 75m (246 ft)
Protection IP Rating: Thermal Protection cut out at 70°C: Operation Temperature:	IP68 (Globe) YES -25 to +50
Finishes Globe lenses:	UV stabilized polycarbonate
Listings:	UL / cUL, CE.
Dimensions & Weights Diameter (mm): Height (mm): Weight:	63 mm (2.5 ins) 82 mm (3.23 ins) 44G (1.56 Ounce)
Installation Options Track System	YES

Dimensions



Rod / Cable Options



MaxiLED Large Globe RGBW

DMX controllable



KEY FEATURES

- DMX RGBW controllable
- IP68
- Multi chip Cree® LED
- 48VAC

Product Overview

MaxiLED Strands provide exceptionally long strands of globe-lensed LEDs that can be used to outline buildings and bridges or connect architectural features with controllable RGBW lighting. Each strand is built for permanent installations with rugged, injection-molded outer globes, heavy gauge wiring, and dependable CREE LEDs.

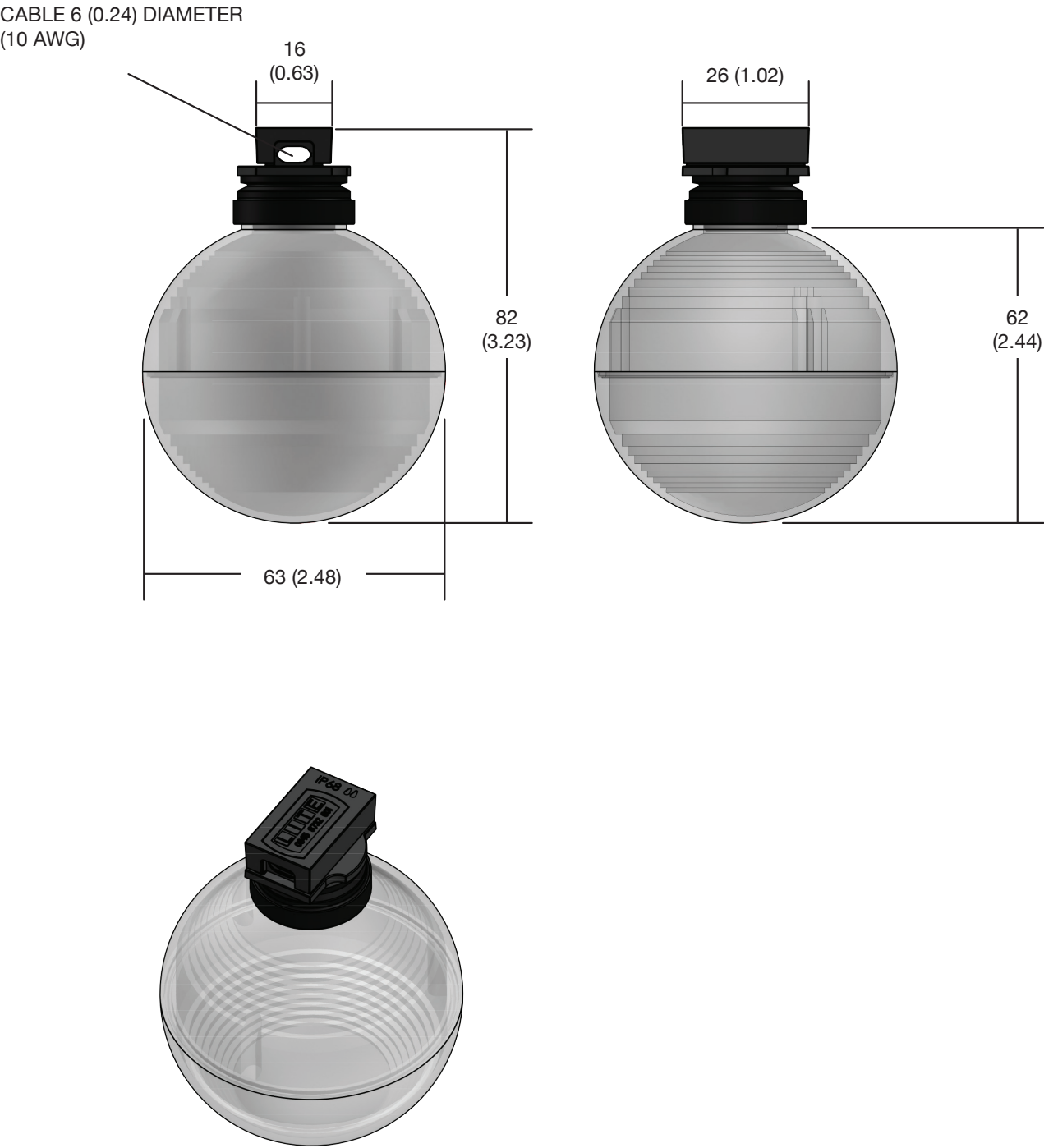


MaxiLED Large Globe

Specifications	DMX RGBW
Dimming DMX512 Dimmable (Data Over power): DMX 512 refresh rate:	YES 44Hz
LED Options (Cree XQE Led's) RGBW:	YES
Electrical specification Power input: LED Current: Watts per unit: Max. Units per system (1.5mm sq cable): Max distance from 1st to last unit (1.5mm sq cable): Lumens RGBW (Frosted) Lumens RGBW (Clear) Lumen Maintenance 85%:	48VAC Data Over Power MaxiLINK system 100ma 2.4w 100 Units 100m (328 ft) 25 Lumens 80 Lumens 70,000Hrs
System Cable Distances Max. cable 1.5mm sq from MaxiLINK to 1st fitting: Max. cable 2.5mm sq from MaxiLINK to 1st fitting:	15m (49 ft) 75m (246 ft)
Protection IP Rating: Thermal Protection cut out at 70°C: Operation Temperature:	IP68 YES -25 to +50
Globe Globe lenses:	UV stabilized polycarbonate
Cable Colours Black (Standard): White: (Minimum order): RAL (Minimum order):	YES YES (on request) YES (on request)
Dimensions & Weights Diameter (mm): Height (mm): Weight Globe (Each inc. Seal and Clip): Weight cable CE(1Meter): Weight cable UL(1Meter):	63 mm (2.5 ins) 82 mm (3.23 ins) 54G (1.79 Ounce) 71G (2.50 Ounce) 56G (1.97 Ounce)
Listings:	UL / cUL, CE. BS EN60598, IEC 60598

Dimensions

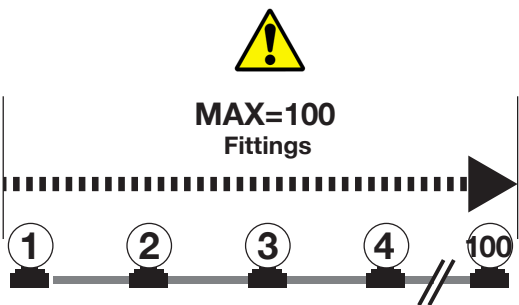
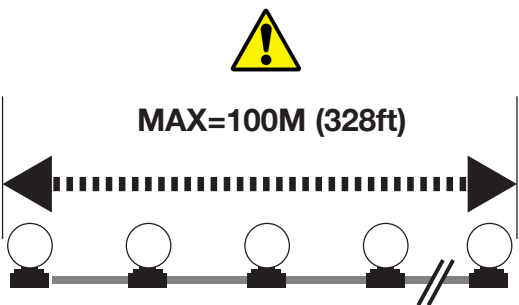
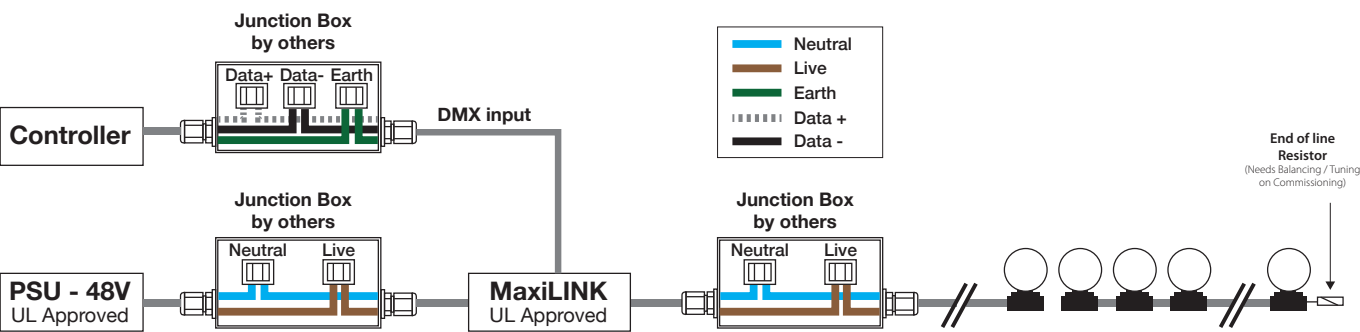
MaxiLED Large Globe



MaxiLED Large Globe RGBW DMX controllable

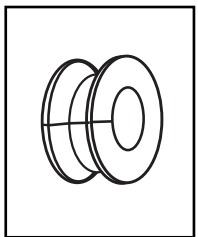
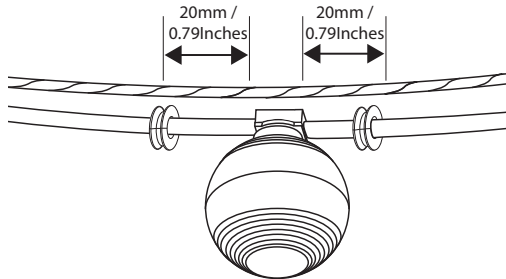


Run Lengths



MaxiLED Large Globe Catenary Installation

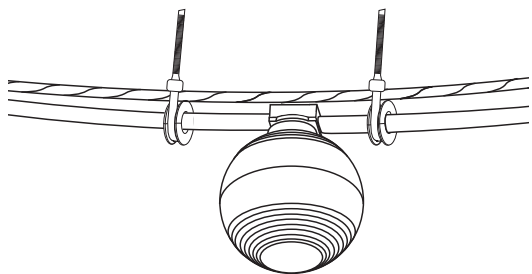
1 Place rubber grommets over MaxiLED Cable



(a). Make sure catenary cable is taught and secure.

(b). With the secure catenary cable above the MaxiLED Cable, place a rubber grommet 20mm / 0.79 inches either side of the MaxiLED housing.

2 Secure MaxiLED Cable

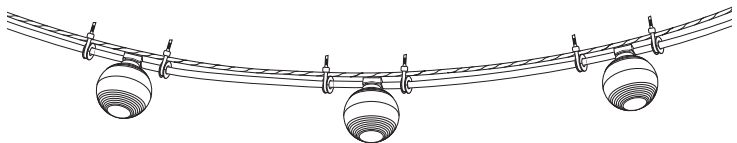


(a). Using a suitable sized UV resistant zip tie (4.8mm width), secure the grommet up against the catenary cable.

(b). Trim excess cable tie.

NOTE: GROMMET PLACED OVER MAXILED CABLE

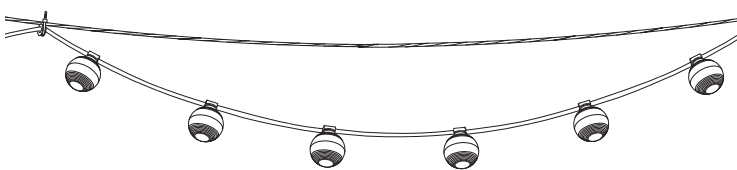
3 Repeat Procedure



(a). Repeat process 1-2 until the installation is complete.

(b). Connect the installed unit to the correct transformer.

4 Alternative Fixing Method



(a). alternative fixing method creating a hoop effect.

The transformer must be installed by a qualified electrician in accordance with all national and local electrical and construction codes. Failure to comply with the installation instructions can result in serious injury or death.

MaxiLED Large/Small Globe

High Output / Static / Random Colour change



KEY FEATURES

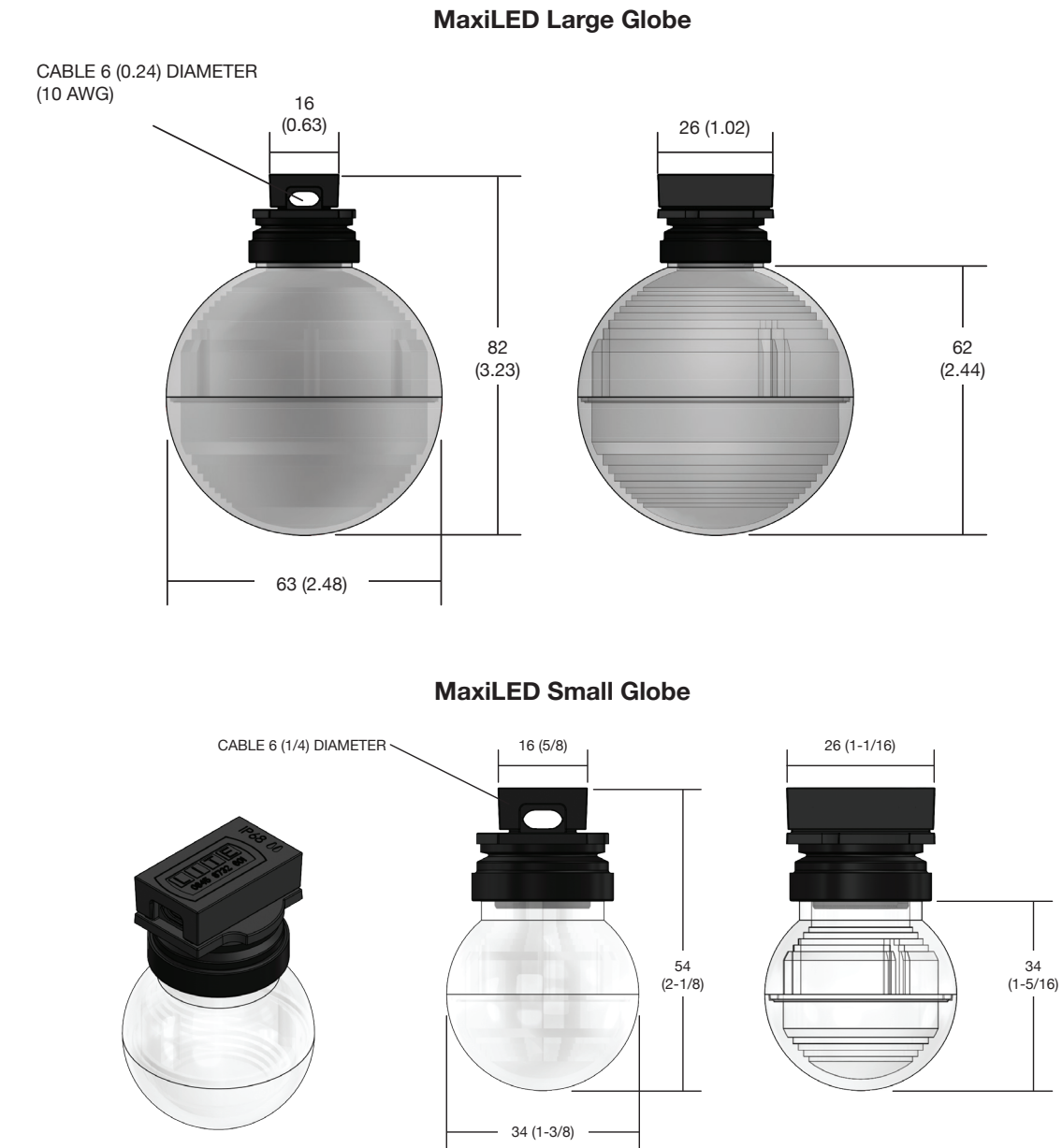
- Available as High Output / Static or Random colour change
- IP68
- Multi chip Cree® LED
- 24VADC
- Large Globe - High Output, Static and Random CC
- Small Globe - Static and Random CC

Product Overview

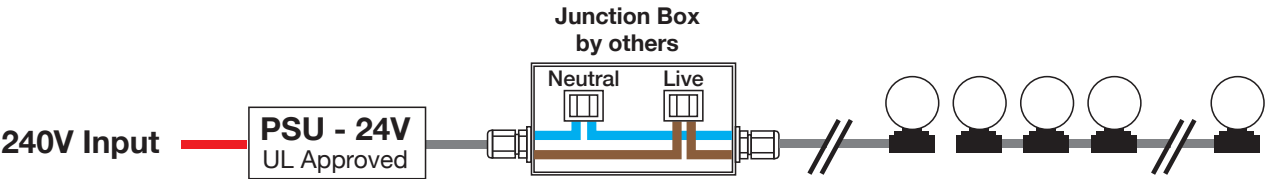
MaxiLED Strands provide exceptionally long strands of globe-lensed LEDs that can be used to outline buildings and bridges or connect architectural features with brilliant static white or colour lighting. Each strand is built for permanent installations with rugged, injection-molded outer globes, heavy gauge wiring, and dependable CREE LEDs.

Specifications	High Output	Static	Random CC
Electrical specification			
Power input:	24VDC	24VDC	24VDC
LED Current:	350ma	19ma	-
Watts per unit:	1.2w	0.6W	1.1w
Max. Units per system (1.5mm sq cable):	80 Globes	300 Globes	215 Globes
Max distance from 1st to last unit (1.5mm sq cable):	50m(164ft)	100m(328ft)	100m(328ft)
Lumens RGBW (Clear)	80 Lumens	37 Lumens	-
Lumen Maintenance 85%:	70,000Hrs	70,000Hrs	-
LED options			
Cool White (10000K):	No	YES	-
Cool White (6000K):	YES	YES	-
Warm White (2700K):	YES	YES	-
Red, Green, Blue, Pink and Amber	No	YES	-
Turtle Friendly (560 nm>)	No	YES	-
Random Colour Change	No	No	YES
System Cable Distances			
Max. cable 1.5mm sq from Power to 1st fitting:	5m (16ft)	15m (49ft)	5m (16ft)
Protection			
IP Rating:	IP68	IP68	IP68
Operation Temperature:	-25 to +50		
Finishes			
Clear:	YES	YES	YES
Frosted:	YES	YES	YES
Globe lenses:	UV stabilized polycarbonate		
Cable Colours			
Black (Standard):	YES		
White: (Minimum order):	YES (on request)		
RAL (Minimum order):	YES (on request)		
Listings:	UL / cUL, CE, BS EN60598, IEC 60598		
Dimensions & Weights			
Large Globe availble	YES	YES	YES
Small Globe available	No	YES	YES
Large Globe Diameter (mm):	63 mm (2.5 ins)		
Large Globe Height (mm):	82 mm (3.23 ins)		
Large Globe Weight Globe (Each):	41G (1.44 Ounce)		
Small Globe Diameter (mm):	34 mm (1.3/8ins)		
Small Globe Height (mm):	54 mm (2.1/8 ins)		
Small Globe Weight Globe (Each):	41G (1.44 Ounce)		
Weight cable CE (1Meter):	71G (2.50 Ounce)		
Weight cable UL(1Meter):	56G (1.97 Ounce)		

Dimensions

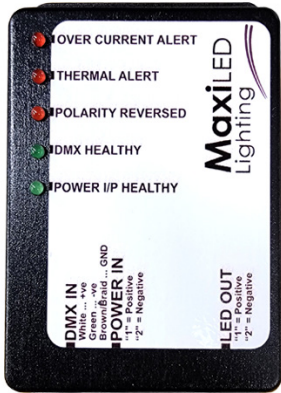


Wiring Example



KEY FEATURES

- IP68 rating
- Data over Power - 2 Core cable
- Compact design
- 48VAC



Product Overview

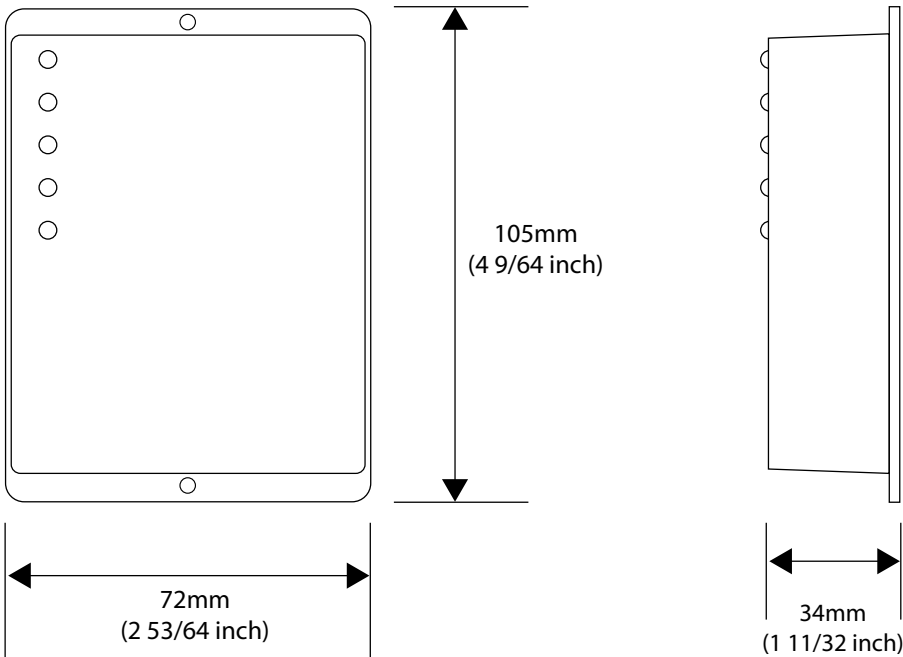
MaxiLINK[®] is used to control (via DMX-512) and power MaxiLED RGBW products such as the Focal Facade Series, Globe Series, Marker Effects Series, MaxiPUNCH Series and Spotlight Series.

On the input side, a DMX signal cable from any third party DMX controller or show design software is required, plus a 48VDC power supply is needed. Data and power (48VAC) are then output together to the MaxiLED RGBW products on one cable. A single MaxiLINK[®] controller is typically dedicated to an individual run (or strand).

Specifications

Power Input:	48VAC Data Over Power MaxiLINK [®] system
Power Output:	250 Watts Max. Per circuit
Data Input:	DMX-512
Length:	105mm (4 9/64 Inch)
Width:	72mm (2 53/64 Inch)
Depth:	34mm (1 11/32 Inch)
Fixing:	2 Pre-drilled holes for fixing
Protection:	Short circuit. Open circuit. Over temperature
Weight:	400g (14.1oz)
Connector:	IP68 and self-locking
Control:	DMX512
Operating Temperature:	-25°c to +50°c (-13°F to +122°F)
Listings:	CE
Capacity:	Each MaxiLINK [®] unit can control up to 100 RGBW control points (400 DMX channels) and power up to 305 ft (100m) of cable.

Dimensions



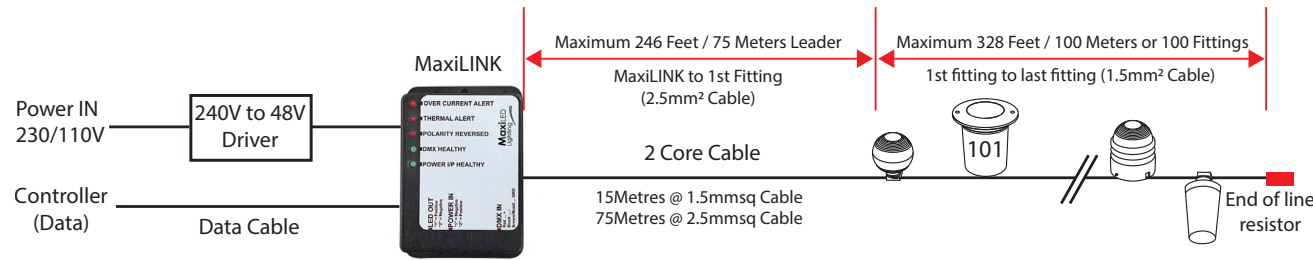
KEY FEATURES

- Utilising existing infrastructure
- Existing cable can be used
- Cost saving (Cables)
- Less refurbishment
- Static light to DMX Controllable
- Minimum 1.5mm² Cable

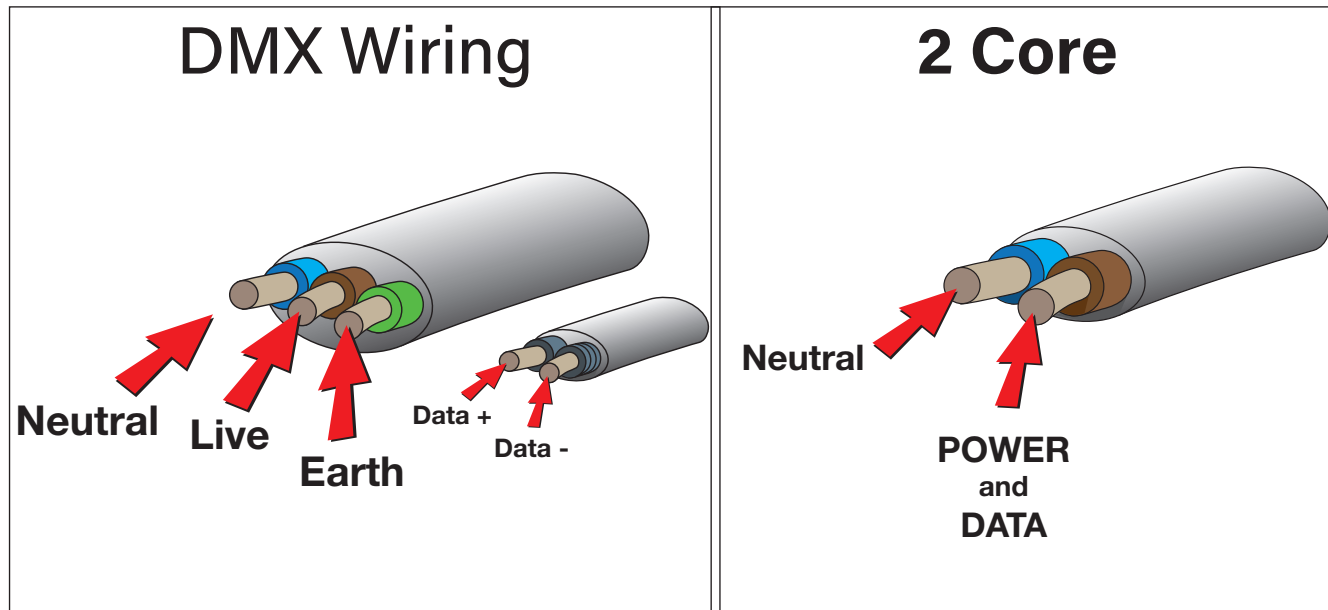


2 Core
Data over Power

Our patented technology combines data over power allowing DMX Data to be sent down the same line as the power. This eliminates the need for an additional data cable to be installed, resulting in HUGE savings in installation times and drastically lowers the chances of water ingress issues.



DMX wiring V's 2 Core wiring



MaxiLED Controls Enclosure

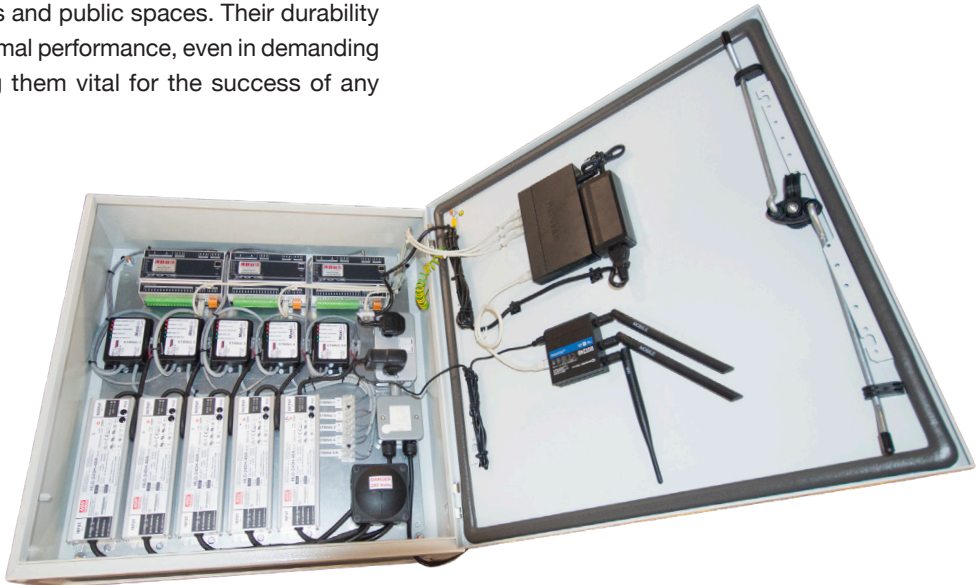
Product Overview

MaxiLED control enclosures are critical components in our lighting systems, particularly for installations requiring robust and reliable control of lighting fixtures. These enclosures house the power supplies, drivers, and control systems that manage the operation of MaxiLED fixtures, including colour changing, dimming, and timing functions.

Overall, MaxiLED enclosures play an essential role in creating reliable, efficient, and safe lighting installations for both indoor and outdoor applications, ranging from architectural lighting to theme parks and public spaces. Their durability and design ensure optimal performance, even in demanding environments, making them vital for the success of any MaxiLED system.

KEY FEATURES

- Durability and Protection
- Efficient Heat Management
- Remote Control and Automation
- Compact and Modular Design
- Safety Features
- Custom Solutions



The background of the advertisement is a photograph of a modern interior space. The ceiling is composed of numerous parallel, dark-colored slats that create a strong linear pattern. Numerous small, round, white LED lights are suspended from the ceiling by thin, dark wires. The lights are arranged in a somewhat random pattern, with some hanging higher than others, creating a dynamic and contemporary lighting effect. The overall color palette is dominated by the dark tones of the ceiling and the bright white of the lights, with some subtle reflections on the floor below.

MaxiLED Lighting

Unit 2, Farrington Place, Rossendale Road Ind. Est. Burnley, Lancashire. UK. BB11 5TY

E: sales@maxiledlighting.com Web: www.maxiledlighting.com