

MaxiLED
Lighting

MaxiPUNCH 302

MaxiPUNCH 302



Key Features

- 512 DMX Controllable
- Available in Intelligent White
- Single strand runs as long as 330 ft (100m)
- IP68
- The MaxiPunch RGBW is available in 2 models.

Description

The MaxiPunch RGBW is available in 2 models. Compact 102 and the Medium 302. This elegant design is in-keeping when installed on most building facades, It's sleek design with optional integrated mounting bracket giving full 3D rotational adjustment make it unique and a must for most applications. The choice of DMX RGBW or DMX Intelligent White, Beam angles and housing finishes allow designers worldwide to select their preferred combination.

MaxiPUNCH 302

Specifications

Power input: **48VDC**

Watts per unit: **14.4w**

LED Current: **200ma**

Lumens RGBW Clear Glass (Full On): **450**

Lumens Intelligent white (Full On): **750**

Features



Lens Options

15° Narrow Spot

25° Narrow Beam

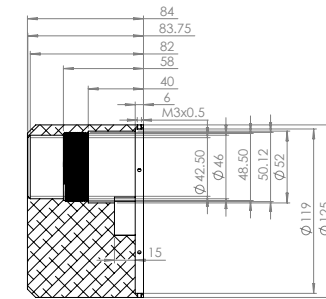
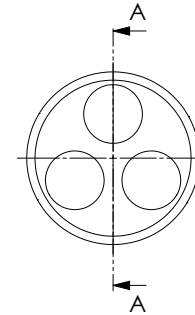
40° Flood Beam

90° Wide Flood Beam

Finishes



Dimensions



SECTION A-A
SCALE 1 : 2

Accessories



Spike



Bracket

Certifications



MaxiPUNCH 302



MaxiLED Lighting

Unit 2, Farrington Place, Rossendale Road Ind. Est. Burnley, Lancashire. UK. BB11 5TY
T: +44 (0)1282 448086 E: sales@maxiledlighting.com Web: www.maxiledlighting.com